

MODERN PERFORMANCE AT A VALUE



Legendary power, speed,
and accuracy are more
affordable than ever

SCIEX TRIPLE QUAD™ 3500 MASS SPEC SYSTEM



A legend
transformed

Introducing the SCIEX Triple Quad™ 3500 Mass Spec System

Today is the day... Take Charge of Your Lab's Success

You need modern performance on a budget

Now offering **productivity, reliability, and robustness** in a modernized entry-level mass spec for today's analytical laboratories.

You deserve quantitation without compromise

The Triple Quad™ 3500 system offers the **speed and precision** you want from a modern mass spec system, with the legendary performance and dependability you trust from SCIEX technology.

You will enhance your results

The Triple Quad™ 3500 system enhancements* improve the key performance criteria essential for your laboratory:

- Faster scan speeds
- Improved polarity switching
- Enhanced sensitivity
- Updated electronics
- Improved data acquisition algorithms
- Modern design

* Enhancements over the API™ 3200 system.



More Compounds, More Uptime, More Reliable Results

Modern hardware, powerful software, and robust engineering increase your productivity to routinely analyze hundreds of compounds in hundreds of samples – day after day, year after year.

Absolute, reliable quantitation

Legendary Turbo V™ ion source efficiently ionizes compounds and virtually eliminates cross-contamination, even with large sample loads, for reliable quantitation over a wide range of flow rates.

Maximum uptime

The proprietary Curtain Gas™ interface reduces the need for routine maintenance and ensures maximum productivity by protecting your mass spec from contamination.

Better quality data

The *Scheduled* MRM™ Pro algorithm improves data quality to ensure fewer peaks are missed and optimal sensitivity is achieved for all compounds.

Simplified data processing

Utilize MultiQuant™ Software for high through-put data processing, review, and reporting, with reliable auto-integration algorithms and query files for fast batch processing.

Diverse HPLC compatibility

Get maximum flexibility by choosing your favorite LC system to couple to your mass spec.

Service and support resources

Get up-and-running quickly by utilizing our extensive service and support resources, including application support with fast response times, flexible service plans, and extensive online and phone support to maximize your success.



Accomplish Your Analysis Goals with the SCIEX Triple Quad™ 3500 System

Powerful, modern hardware for ultimate reliability and productivity on a budget.

What's changed

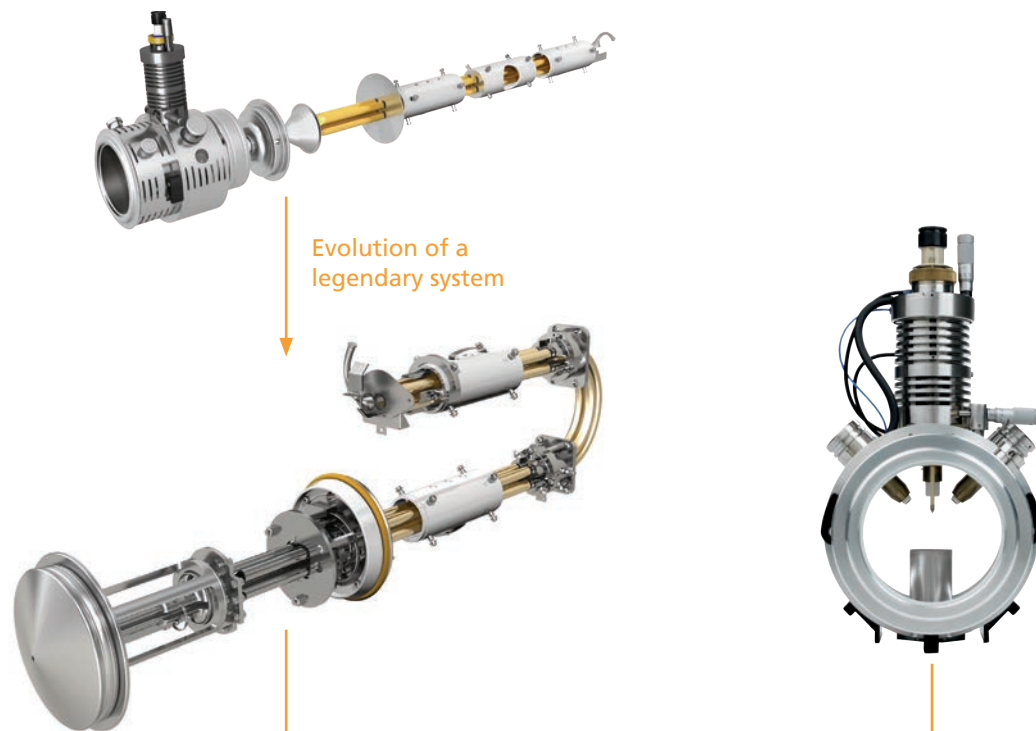
Evolution of the ion path – modernized to meet the demands of today's analytical labs

The Triple Quad™ 3500 system takes the best features of the API 3200 system and enhances them with modern engineering and electronics.

What's keeping with tradition

The robustness and ruggedness you expect from AB SCIEX technology

The Triple Quad™ 3500 system keeps with tradition, featuring the legacy Turbo V™ source and Curtain Gas™ interface.



More MRMs per injection, space-saving design

Curved LINAC® collision cell

Enhanced sensitivity through more efficient ion focusing

High pressure Q0 and QJet® ion guide

Compatible with fast LC and achieve wider compound coverage

Fast eQ™ Electronics

High reproducibility and accuracy

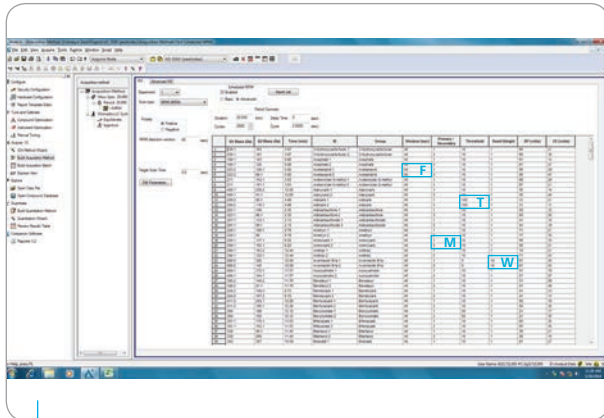
AcQuRate™ pulse counting detector

Excellent mass range for compound detection from 5 to 2000 Da

Achieve consistent results over long runs of dirty samples

Ideal for a demanding high throughput lab

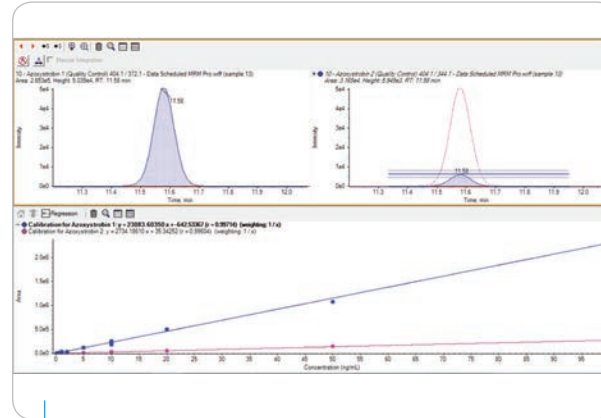
Smart Software Improves Quality and Throughput of Results



Collect high quality MRM data without missing any peaks

Scheduled MRM™ Pro Algorithm

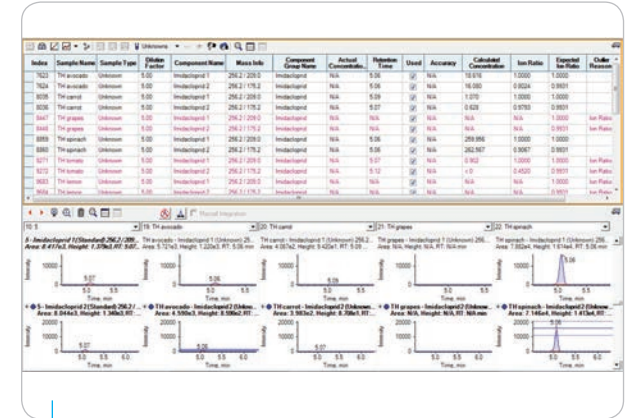
Take more control over your data acquisition – with flexible window widths (F), dynamic window extension (T), dwell-time weighting (W), MRM-triggered MRM (M, T) and more – to improve the quality of your data for every compound in your screen.



High-throughput MRM quantitation made easy

MultiQuant™ Software

Achieve reliable auto-integration, faster peak review, easy comparisons of multiple MRM transitions, and direct reporting for efficient batch data processing.



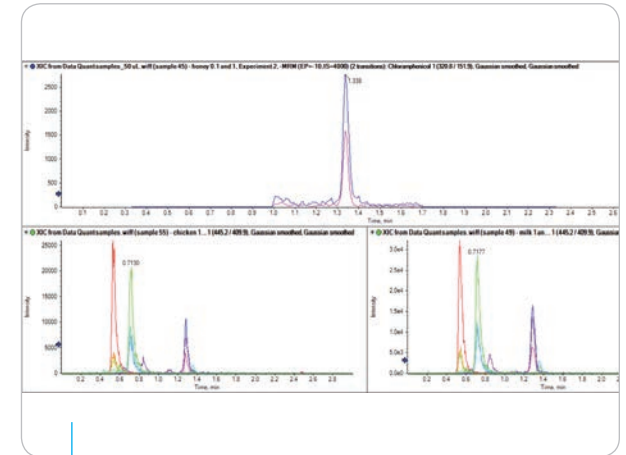
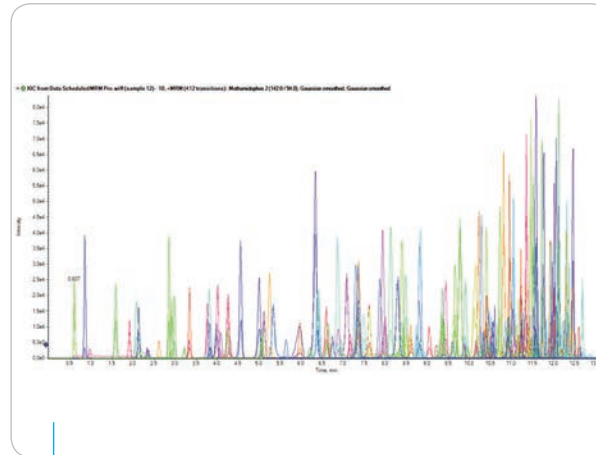
Customized data processing and reporting

Custom query and reporter templates

Our support team will assist you in writing custom query and reporter templates to enable you to quickly process large batches of quantitative data and report your results based on your lab's customized criteria.

Take Charge of Your Lab's Success and Experience the Benefits of LC-MS/MS:

- More compounds in every injection
- Lower quantitation limits
- Increased sample volume and throughput productivity



100s of compounds, 1 analysis.

Exceptional results achieved for the analysis of more than 200 pesticide residues in food samples in a single injection on the Triple Quad™ 3500 system. Results shown represent a 2 uL injection of 10 ng/mL (ppb) pesticide mix utilizing the Phenomenex Kinetex Biphenyl HPLC column (2.6 um, 50 x 2.1 mm).

Low-level quantitation achieved.

The Triple Quad™ 3500 system handles low level quantitation of challenging veterinary drug residues in foods. Results shown represent the quantitation of 0.1 ug/L (ppb) of Chloramphenicol in honey (top panel), 10 ug/kg (ppb) of Tetracycline residues in animal tissue (bottom left panel), and 100 ug/L (ppb) of Tetracycline residues in milk (bottom right panel).

We're Passionate About LC-MS/MS – It's What We Do, Day-In and Day-Out.

SCIEX mass spectrometry solutions are backed by a global customer support network comprised of certified engineers, technical specialists, training experts, application support chemists, and regional logistic centers – all dedicated to helping you get the most from your SCIEX system.

Contact our support team now for help from every topic ranging from sample preparation to mass spec optimization, and more.

sciex.com/support

LC-MS/MS knowledge anywhere

SCIEXUniversity



Register for self-paced learning courses across a scope of topics:

- Introduction to LC-MS
- Software and data processing
- Maintenance and troubleshooting
- Applications workflows

training.sciex.com



Andre speaks your language

Talk to him about your applications

Andre is fluent in LC-MS/MS applications. His years of experience in application development for food and environmental testing speaks volumes. Give him a few minutes, and he can save you a few hours. He can streamline your workflow, reduce manual steps, and help you generate your data with improved efficiency and confidence. Ask him for a quick demonstration of one of our application software packages, and he'll show you how to bring your lab to new levels of productivity.

Andre is more than an application expert. He's a part of the SCIEX global support network here to help you achieve success.

- Andre Schreiber, Global Technical Manager

Network Your Way to Success

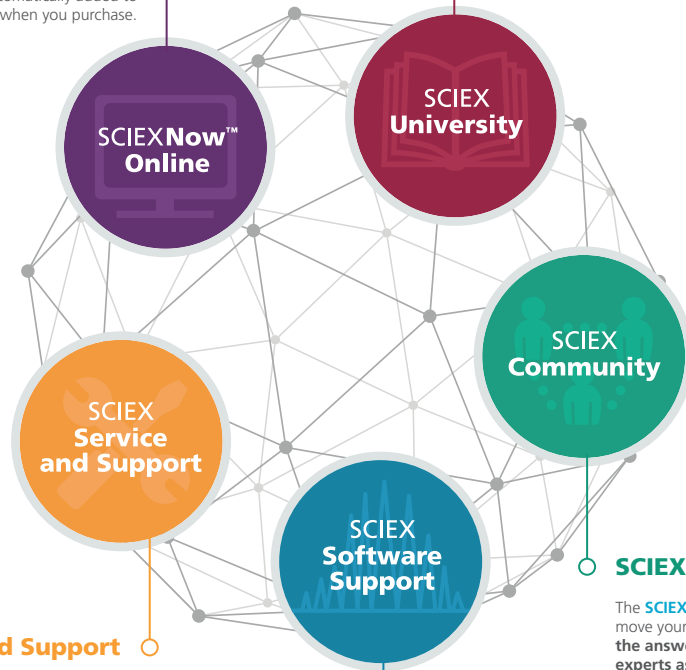
Discover How the SCIEX Success Network Becomes Your Pathway to Answers

SCIEXNow™ Online

The **SCIEXNow Portal** is the *Everything, Anytime* destination for all your SCIEX support needs. You can keep track of activities that matter most to you and manage your lab in the most efficient way possible. Extensive self-help resources like our deep Knowledge Base, enable you to solve many problems on your own. **SCIEXNow is available 24/7** and your new SCIEX instruments are automatically added to your profile when you purchase.

SCIEXUniversity

SCIEXUniversity offers the most diverse and flexible learning options available, with best-in-class content that helps you to get the most out of your instrument and take your lab to the next level. **Available personalized learning paths based on the latest memory science** ensure better knowledge retention, and automated onboarding and enrollment means you'll get up and running faster.



SCIEX Service and Support

Our mission to help you be successful, whether it's to repair your instrument, assist with your workflows, or help you maximize productivity in your lab. Whatever your challenge, global **SCIEX Service and Support** personnel are subject matter experts who are focused on mass spec and capillary electrophoresis, so **you'll be able to achieve your scientific goals quickly and efficiently.**

SCIEX Community

The **SCIEX Community** helps you move your science forward and **find the answers you need from SCIEX experts as well as your peers.** In the community, you can share and exchange ideas, protocols, stay up to date with the latest products, and receive support.

SCIEX Software Support

SCIEX Software combines best-in-class capabilities, comprehensive proactive support, services driven by innovation, and a commitment to promptly deliver the right solution to meet the various demands of your lab. With a Software Support plan, you will have the latest software, so **your instruments run at peak performance.**

AB Sciex is doing business as SCIEX.

© 2018 AB Sciex. For Research Use Only. Not for use in diagnostic procedures. The trademarks mentioned herein are the property of AB Sciex Pte. Ltd. or their respective owners. AB SCIEX™ is being used under license.

9950314-01 01/2018

Headquarters

500 Old Connecticut Path
Framingham, MA 01701 USA
Phone 508-383-7700
sciex.com

International Sales

For our office locations please call the division headquarters or refer to our website at sciex.com/offices

Start Your Path to Success Now: sciex.com/support

