

Agilent AdvanceBio Desalting-RP cartridges

Perform reversed-phase removal of salt ions—online—before MS detection

Characterizing complex proteins—including monoclonal antibodies—requires multiple techniques, such as affinity, ion exchange, and size exclusion chromatography. However, the mobile phases used for these techniques are aqueous-based and contain nonvolatile salts, which can cause signal suppression during MS detection.

AdvanceBio Desalting-RP cartridges enable fast, efficient online removal of salt ions before MS detection. You can use these cartridge-style columns on their own with any LC system to desalt collected fractions. They can also be used on an Agilent 1290 Infinity II 2D-LC system to perform a second-dimension desalt after an affinity, ion exchange, or size exclusion first-dimension separation.



Agilent AdvanceBio Desalting-RP cartridges

- Perform MS detection with traditionally non-MS methodologies—such as IEX, SEC, and affinity chromatography
- Save time by desalting your samples online
- Reduce downtime and maintenance by eliminating salt in your MS
- Improve data quality and confidence in your results

LEARN MORE:

www.agilent.com/chem/advancebio

AGILENT ADVANCEBIO DESALTING-RP CARTRIDGES



AdvanceBio Desalting-RP cartridge features

AdvanceBio Desalting-RP cartridges are ideally suited for reversed-phase desalting before MS detection. They feature:

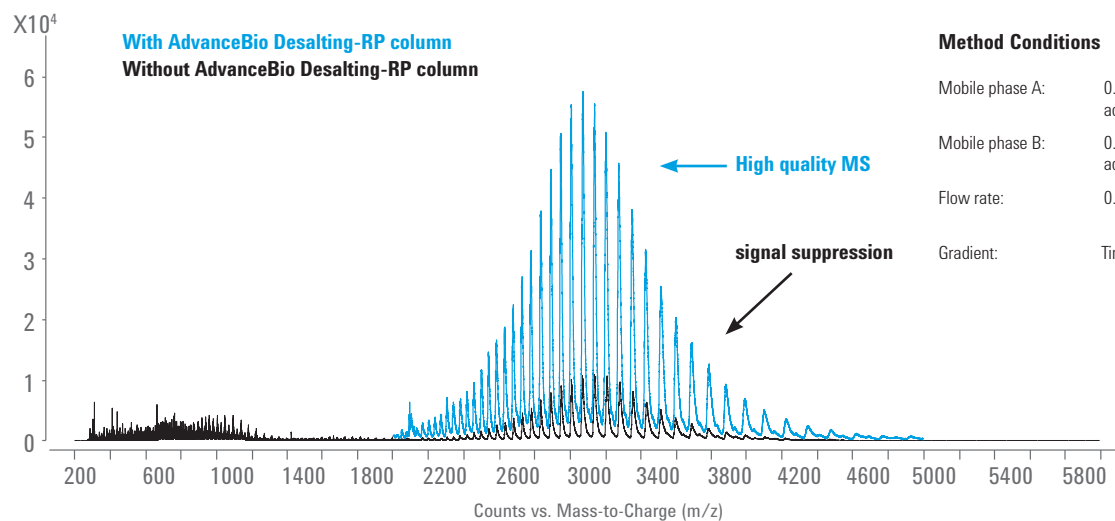
- A 10 μm polymeric reversed-phase particle
- Large pore size (1000 \AA) for large biomolecules
- Stability from pH 2–13
- Compatibility with all commonly used reversed-phase mobile phases
- Convenient cartridge style (use the Agilent standard reusable holder, P/N 820999-901)



TIP

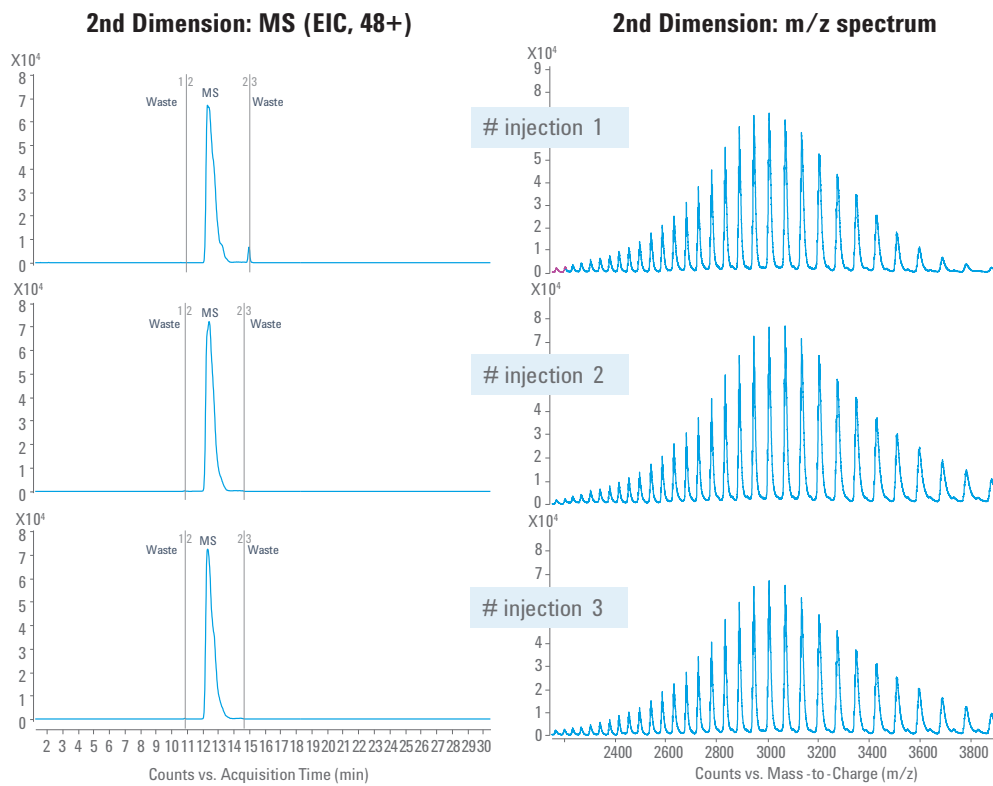
Consider Agilent AdvanceBio SEC, Agilent Bio IEX, or Agilent Bio-Monolith Protein A columns for your first dimension.

AdvanceBio Desalting-RP cartridges improve the quality of MS data

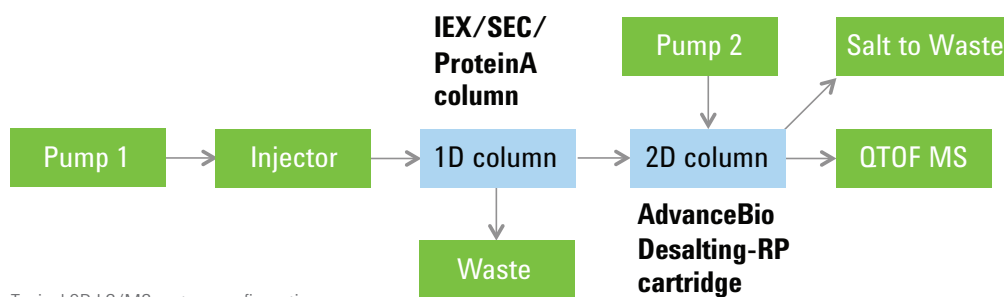


REVERSED-PHASE DESALTING FOR ONLINE REMOVAL OF SALT IONS, BEFORE MS DETECTION

Proof of reproducible cartridge performance



2D LC/MS of mAb1 profiles. Injection-to-injection repeatability confirms consistent AdvanceBio Desalting-RP cartridge performance. 1D column: IEX; 2D column: AdvanceBioDesalting-RP cartridges. Second dimension EIC (left) and m/z (right) profiles.



Typical 2D LC/MS system configuration

Part number	Description
PL1612-1102	AdvanceBio Desalting-RP, 3/pk 2.1 x 12.5 mm
820999-901	Cartridge holder



Advance your confidence for bioterapeutics with our full AdvanceBio portfolio

- **AdvanceBio SEC mAb:** Aggregation analysis with increased speed, resolution, reproducibility and sensitivity
- **AdvanceBio Glycan Mapping:** For preparation and analysis of 2-AB labeled N-linked glycans
- **AdvanceBio RP-mAb:** The only reversed-phase column designed specifically for mAbs
- **AdvanceBio Oligonucleotide:** For accurate and reliable characterization of impurities
- **AdvanceBio Peptide Mapping:** Quickly resolve and identify amino acid modifications in primary structure
- **Agilent Bio-Monolith Protein A and G:** For titer determination and purification via affinity chromatography
- **Agilent Bio mAb and IEX:** For charge variant analysis via ion exchange chromatography

www.agilent.com/chem/advancebio



To learn more, or to order now, contact your
Agilent sales representative at
www.agilent.com/chem/contactus

For Research Use Only. Not for use in diagnostic procedures.

© Agilent Technologies, Inc. 2016
Published in USA, August 1, 2016
5991-7067EN