

Workstation Migration for OpenLab CDS ChemStation Edition to OpenLab CDS

Overview

OpenLab CDS versions 2.2 and higher comes with a migration tool that automates the process of migrating data, instrument information, and user information, from OpenLab CDS ChemStation Edition versions C.01.05, C.01.06, and C.01.07. This tool reduces a manual migration time of approximately four hours to less than half an hour.

Using the migration tool will allow you to:

- Reuse ChemStation Edition data and results in OpenLab CDS Workstation
- Import and reuse methods from ChemStation Edition in OpenLab CDS including compound identification settings and integration events
 - Method import is manual if using OpenLab CDS version 2.2
- Complete the transfer of the following user and instrument information
 - Users, user groups, roles and permissions
 - Instrument configurations
- Create series of reports on the details of export and how it is mapped to OpenLab CDS

Migration Steps

- 1. Planning step** – Verify instrument and driver compatibilities, confirm PC operating system and software versions.
- 2. Export step** – This will export raw and results data, shared services information, instrument configuration, and user roles to a USB drive or a networked location. It will create an Export Destination folder containing
 - a. The ChemStation data (ChemStation Export.zip)
 - b. A report of all the files included in the OpenLab CDS ChemStation Edition export that are in the ChemStation Export zip package. (Export_file_report.pdf)
 - c. A report containing instrument information report. (Instrument Configuration Report.html)
 - d. User and permission data including security, authentication, roles, administration information, and instrument configuration. (OpenLabSharedServicesExport.zip)
 - e. Import mapping file. (Package.descriptor.xml)
 - f. A report containing user role information. (Role Report.html)
 - g. A report containing users and groups. (User and Group Report.html)
- 3. Import step** – This will import the data from the export location into the newly Installed OpenLab CDS Workstation. The following tasks are performed:
 - a. Creation of a default project group with sub-projects for each instrument.
 - b. Extraction of data into OpenLab CDS via a staging location.
 - c. Creation of users, groups and roles to match OpenLab CDS ChemStation Edition.
 - d. Creation of active instruments to match OpenLab CDS ChemStation Edition.

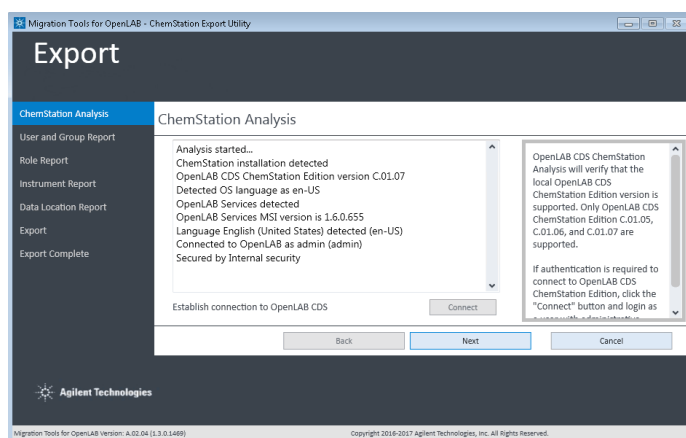


Figure 1. When the migration tool is launched, it will verify that a supported version of ChemStation exists on the source workstation.

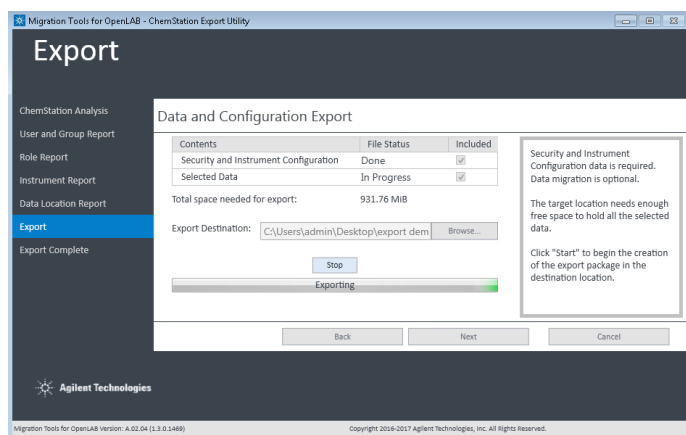


Figure 2. The export time will vary based on the amount of data being exported

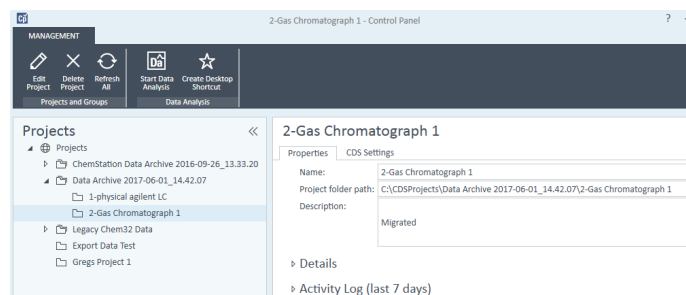


Figure 3. The import step moves data under a new project group in OpenLab CDS. Each instrument folder is set up as a project and all the result sets are moved into this project structure

Compatibility

Source	Target
OpenLab CDS ChemStation Edition <ul style="list-style-type: none">– Workstation only (Not Secure Workstation)– Versions C.01.05, C.01.06, and C.01.07– Windows 7 and Windows 8– Data Analysis add-ons are not supported– When using OpenLab CDS version 2.2 you must identify and point the software to the location of the data, if it is not the default location (C:\Chem32). OpenLab CDS version 2.3 will automatically find all data locations.	OpenLab CDS <ul style="list-style-type: none">– Workstation only (Not Workstation Plus)– Version 2.2 and 2.3– Windows 7, Windows 8, and Windows 10– Note: Initial install should not have authentication configured<ul style="list-style-type: none">– This will be configured by the migration tool.

Availability

The migration tool is available on the OpenLab CDS USB drive and on Agilent SubscribeNet free of charge.

The tool is available in English, Japanese, Chinese, and Brazilian Portuguese languages.

Learn more

Contact your local Agilent sales representative or visit
www.agilent.com/chem/openlabcds

See how easy it is to migrate your data to OpenLab CDS
www.agilent.com/chem/data-migration

CrossLab Technology Refresh Services
<https://www.agilent.com/en/products/crosslab-instrument-services/method-applications/technology-refresh-services>

www.agilent.com/chem/openlab

This information is subject to change without notice.

© Agilent Technologies, Inc. 2018
Printed in the USA, May 30, 2018
5991-9464EN

