

Prep 150 LC System

The perfect combination of intuitive software and robust instrument performance

A VERSATILE SYSTEM TO SUIT YOUR PURIFICATION REQUIREMENTS

Developed for dedicated personal purification requirements or quick adoption in a centralized lab, the Waters® Prep 150 LC System, featuring intuitive ChromScope™ Software, is for scientists requiring robust system performance. Ideal for initial workflow criteria where rapid separations of complex mixtures are required, this versatile system is designed to satisfy processing requirements of few to many samples a day with confidence.



The Prep 150 LC System shown with the 2545 BGM, Prep Injector Module, 2998 PDA Detector, and WFC III.

SIMPLIFIED PURIFICATION

Purification is made simple with ChromScope Software. The easy-to-navigate intuitive screens provide real-time, useful system and data information at a quick glance.

- Easy icon-driven interface for quick access to instrument parameters or system control.
- Straightforward wizards guide the user while creating methods.
- Easily navigate with quick tabs to select methods, sample sets, system configurations, system status, or run status with one click.
- System messages providing up-to-the-minute status on instrumentation and purification runs.

Waters ChromScope Data Software for the Prep 150 LC Purification System.

PREP 150 LC SYSTEM CONFIGURATION

Choose from an array of Prep 150 LC System options and tailor to your laboratory's purification needs.

Detection technologies:

- 2489 UV/Visible (UV/Vis) Detector
- 2998 Photodiode Array (PDA) Detector

Sample injection:

- 2707 Autosampler
- Prep Injector Module

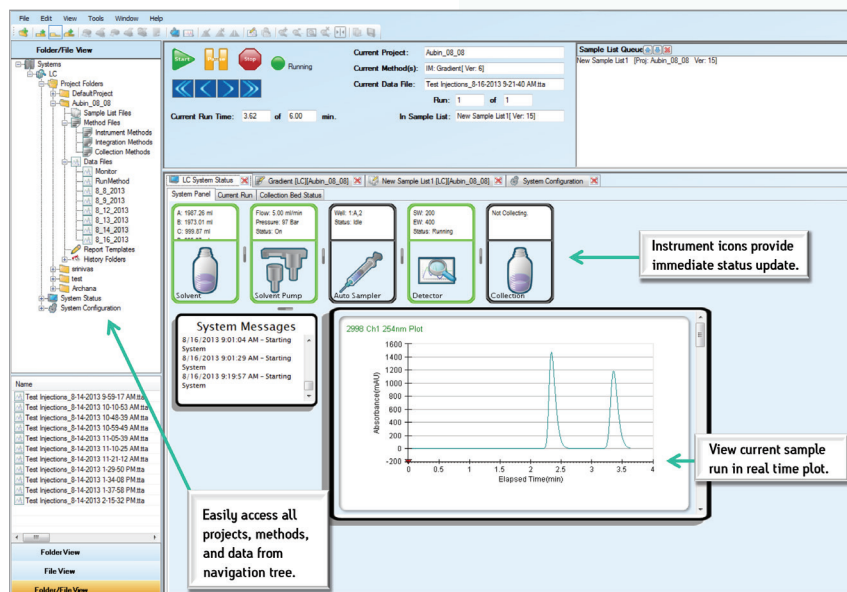
Solvent delivery systems:

- 2545 Binary Gradient Module (BGM) high pressure mixing binary gradient pump*
- 2545 Quaternary Gradient Module (QGM) low pressure mixing gradient pump*

Fraction collection:

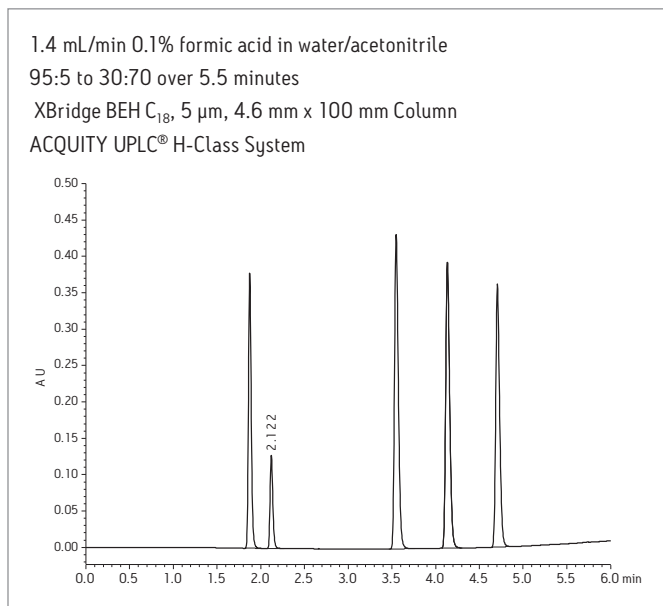
- Waters Fraction Collector III (WFC III)

*System flow rates up to 150 mL/min, capable of mg – g purification and columns up to 50 mm I.D.

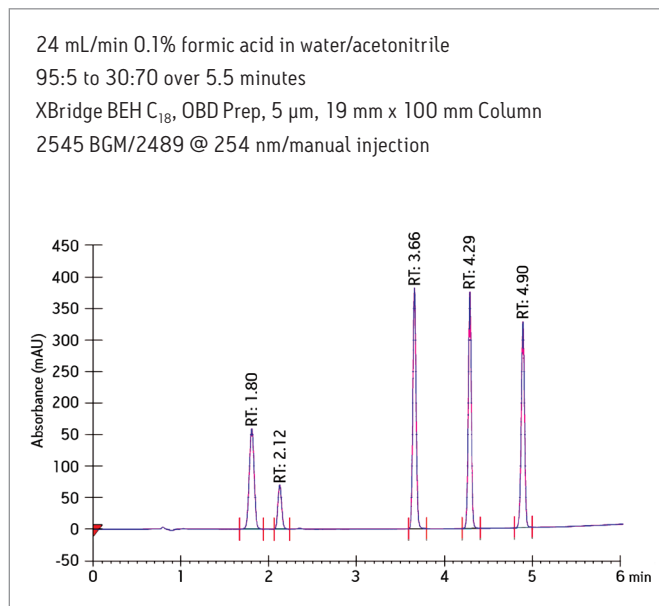


STRAIGHTFORWARD SCALE-UP

Confidently scale methods from analytical to prep using Waters OBD™ Preparative Columns and the Waters OBD Preparative Column Calculator. Shown here is an analytical to prep method using XBridge® OBD Preparative Columns. Easily scale up to our more sophisticated AutoPurification™ System when full automation and higher levels of specificity and purity are required.



Successfully scale analytical to prep methods with Waters OBD Preparative Columns.



The preparative method was acquired by using the Analytical to Prep Gradient Calculator integrated within Waters ChromScope Data Software.

OBD PREPARATIVE COLUMNS FOR HPLC PURIFICATION

Bridging the gap from analytical to prep

- Increase sample load
- Improve resolution
- Reduce run time

Productivity comes from predictability. For more than 10 years, chemists have come to rely on the high purity and recovery obtained with our OBD Preparative Columns. Extended column lifetimes and high mass loading capacity lead to increased productivity.

- SunFire™ OBD Preparative Columns – Working at low pH only, need high loading for bases
- XBridge OBD Preparative Columns – Working at high pH only
- XSelect® CSH OBD Preparative Columns – Working at both low and high pH, need high loading for bases
- Peptide Separation Technology OBD Preparative Columns – Isolation and purification of synthetic peptides



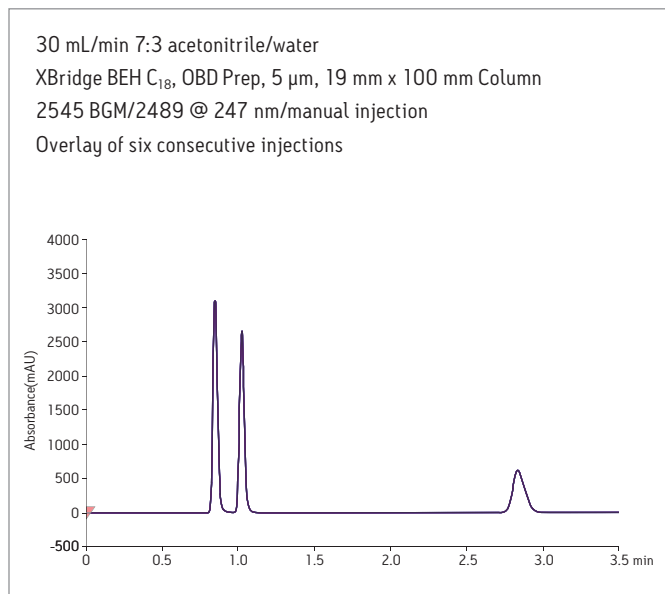
OBD Preparative Columns.

- Atlantis® T3 OBD Preparative Columns – For purification of polar compounds
- XBridge Amide/Atlantis HILIC/XBridge HILIC OBD Preparative Columns – For purification of polar and highly polar compounds under HILIC separation mode

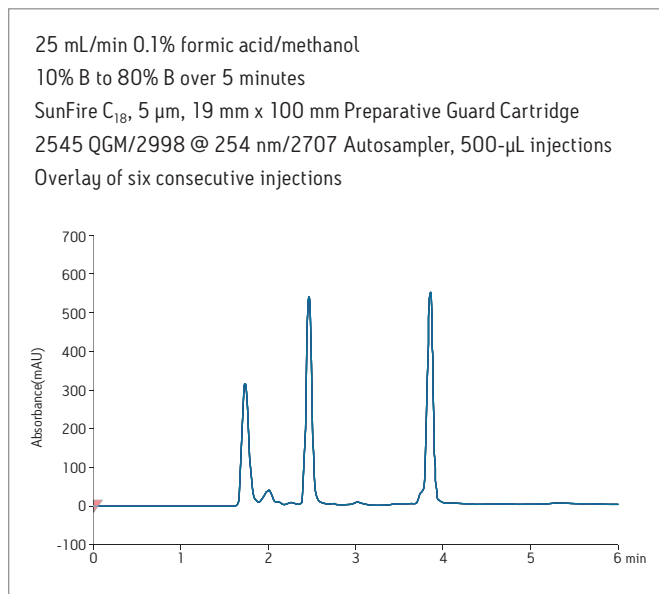
Select OBD Preparative Columns for speed, robustness, predictable performance, and ease of scaling from analytical to prep.

PROVEN PERFORMANCE AND RELIABILITY

Waters high performance preparative solvent delivery systems provide reliable and consistent performance you can depend on. Satisfy your application requirements with either the high-pressure mixing binary pump or the low-pressure mixing quaternary pump.



Multiple injections performed using an isocratic method with the 2545 BGM demonstrates reliable reproducibility required for stringent time-based fraction collection parameters.

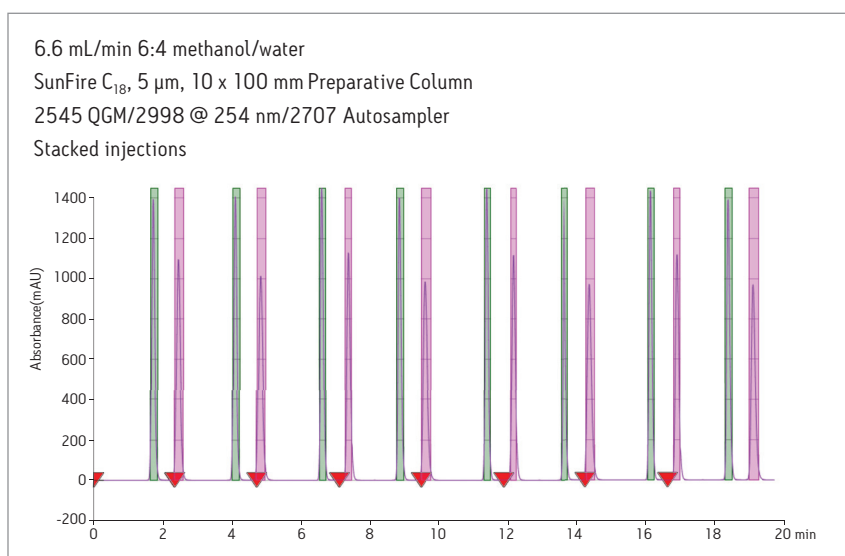


Highly reproducible results generated with a gradient method on the 2545 QGM.

MAXIMIZE SYSTEM AUTOMATION

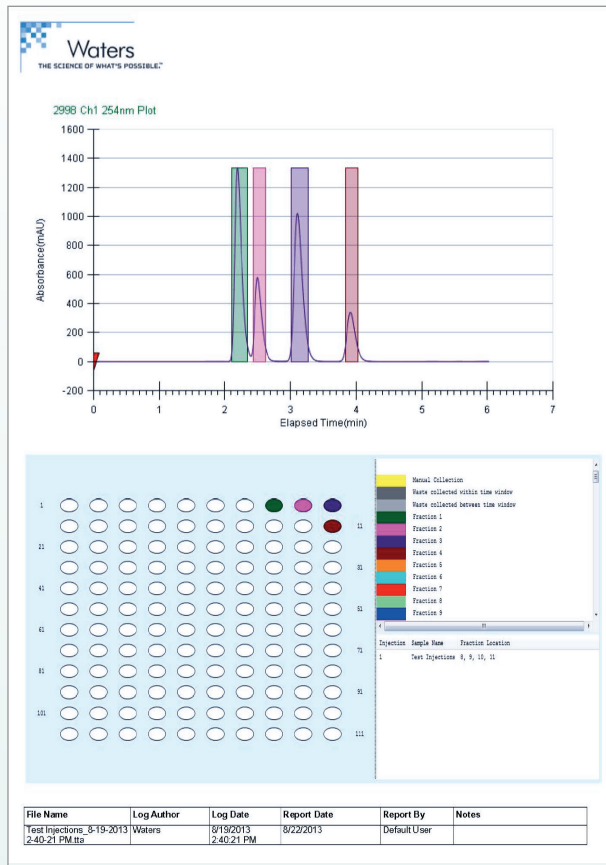
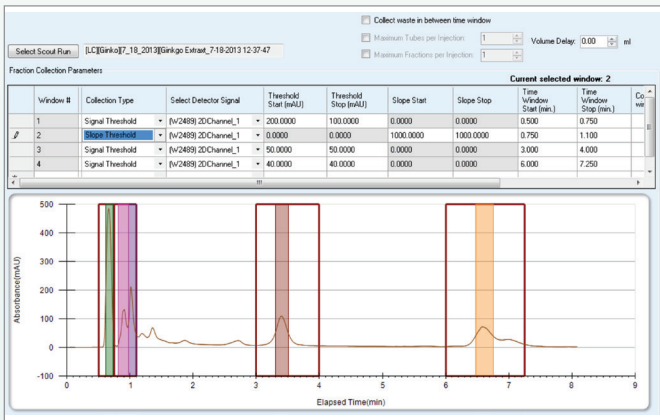
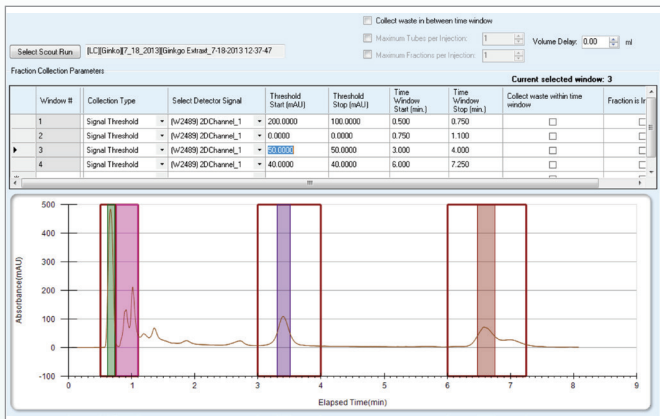
Utilize the stacked injection function to efficiently separate a large amount of sample with the simplistic wizard tool, and effortlessly optimize your purification results.

Optimize system efficiency and throughput when collecting the same compounds from multiple sample injections with isocratic methods.



OPTIMIZE FRACTION COLLECTION PARAMETERS AND REPORT RESULTS

ChromScope Software provides key fraction collection parameters, allowing you to select the optimum method to isolate and purify compounds of interest. Quickly identify fraction locations with the color-coded peak-to-fraction feature.



Robust software featuring collection method development allows you to simulate and optimize your fraction collection parameters without using valuable sample.

Create and customize reports with simplistic drop and drag functionality. Quickly send reports via email or generate a PDF.

BE ASSURED. CHOOSE WATERS GLOBAL SERVICES.

Waters Global Services focuses on optimizing Waters products with superior service, support, upgrades, training, and Waters Quality Parts®. For more information, go to waters.com/services.

Waters

THE SCIENCE OF WHAT'S POSSIBLE.®

Waters, Waters Quality Parts, The Science of What's Possible, ACQUITY, Atlantis, XBridge, and XSelect are registered trademarks of Waters Corporation. AutoPurification, ChromScope, SunFire and OBD are trademarks of Waters Corporation. All other trademarks are property of their respective owners.

Waters Corporation
 34 Maple Street
 Milford, MA 01757 U.S.A.
 T: 1 508 478 2000
 F: 1 508 872 1990
www.waters.com

©2014 Waters Corporation. Printed in the U.S.A.
 January 2014 720004637EN KP-IGS

