

## Measurement of Urinary Serotonin for Clinical Research, Using Mixed-Mode SPE and a High-Strength Silica PFP Column

Jonathan P. Danaceau, Erin E. Chambers, and Kenneth J. Fountain  
Waters Corporation, Milford, MA, USA

### APPLICATION BENEFITS

- Retention and baseline resolution of serotonin from endogenous, potentially interfering matrix components
- Minimal matrix effects
- Linear, accurate, and precise results, from 5.0 to 500 ng/mL

### WATERS SOLUTIONS

Oasis® WCX 96-Well Plate, 30-mg sorbent per well, 30- $\mu$ m particle size  
([p/n 186002503](#))

96-well Sample Collection Plate, 800  $\mu$ L round well ([p/n 186002481](#))

ACQUITY UPLC® HSS PFP Column, 100Å, 1.8  $\mu$ m, 2.1 mm x 100 mm  
([p/n 186005967](#))

ACQUITY UPLC I-Class System

Xevo® TQD

MassLynx® Software

### KEY WORDS

Serotonin, 5-HT, SPE, solid phase extraction, LC-MS/MS, quantitation

### INTRODUCTION

Clinical research scientists often measure concentrations of urinary serotonin (5-HT). While serotonin is often analyzed by HPLC using electrochemical detection (ECD), the use of UPLC®-MS/MS affords greater analytical selectivity. This application note details the use of mixed-mode ion exchange solid phase extraction (SPE) to selectively isolate serotonin from urine, followed by chromatographic separation on a high-strength silica (HSS) PFP column. The method, which utilizes orthogonal sample pretreatment and chromatography, minimizes matrix effects as it promotes resolution of serotonin from potentially interfering endogenous compounds.

### METHODS

A stock, standard solution of 1.0 mg/mL serotonin was prepared in methanol containing 0.1% formic acid (to discourage oxidation). A stock solution of internal standard composed of 500- $\mu$ g/mL D4-serotonin (CDN Isotopes, Pointe-Claire, Quebec) was prepared in 50:50 methanol/water containing 0.1% formic acid. Working standard solutions were prepared daily in 10% methanol with 0.1% formic acid.

## EXPERIMENTAL

## LC conditions

LC system:	ACQUITY UPLC I-Class
Column:	ACQUITY UPLC HSS PFP Column, 1.7 $\mu$ m, 2.1 x 100 mm
Column temp.:	30 °C
Sample temp.:	10 °C
Mobile phase A (MPA):	Water with 0.1% formic acid
Mobile phase B (MPB):	Acetonitrile with 0.1% formic acid
Purge solution:	20% Acetonitrile
Wash solution:	5% Acetonitrile

The gradient program is shown in Table 1.

## MS conditions

MS system:	Xevo TQD
Ionization mode:	ESI positive
Capillary voltage:	1.0 kV
Cone voltage:	22 V
Desolvation gas:	900 L/hr
Cone gas:	0 L/hr
Desolvation temp.:	500 °C
Source temp.:	150 °C

Data were acquired and analyzed using MassLynx Software (V4.1, SCN 855).

Quantification was performed using the TargetLynx™ Application Manager.

## Sample preparation

Urine samples were pretreated with 1.67% (v/v) 6 N HCl, to mimic the acidic pretreatment normally used for this method. 40  $\mu$ L of a 1  $\mu$ g/mL internal-standard working solution was added to a 400- $\mu$ L aliquot of acidified urine, followed by 1 mL of 0.5 M  $\text{NH}_4\text{CH}_3\text{COO}$ . Pretreated samples were loaded in individual wells of a WCX 96-well plate that had been conditioned with 1 mL of methanol and 1 mL of water. After loading the samples, wells were washed with 1 mL of 20 mM  $\text{NH}_4\text{CH}_3\text{COO}$  followed by 1 mL of methanol. The 96-well plate was then dried under vacuum for 30 seconds, to remove as much methanol as possible from the sorbent bed. The samples were eluted from the plate with 2 x 250  $\mu$ L aliquots of 30:70 methanol/water containing 5% formic acid into an 800- $\mu$ L, 96-well sample collection plate ([p/n 186002481](#)). Each aliquot was initially allowed to percolate through the well, to maximize duration of contact with the sorbent. 5  $\mu$ L of the eluate was injected onto the UPLC-MS/MS system. The extraction procedure is summarized in Figure 1.

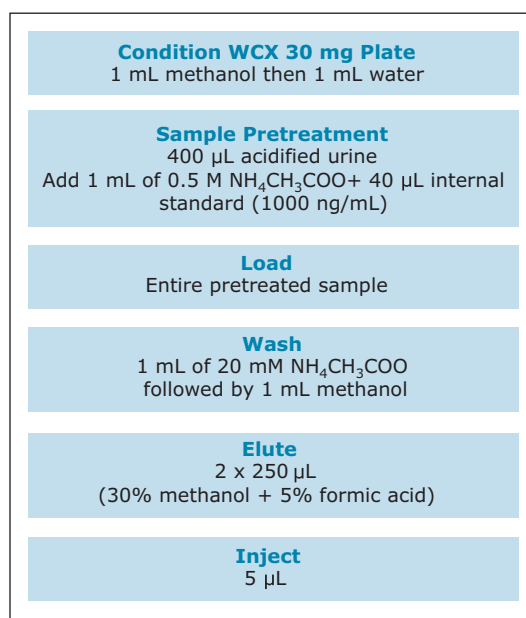


Figure 1. WCX extraction methodology for urinary serotonin.

Time (min.)	Flow (mL/min.)	%A	%B
0	0.5	98	2
0.5	0.5	98	2
2.5	0.5	70	30
2.6	0.5	98	2
3.0	0.5	98	2

Table 1. Mobile phase gradient. The compositions of MPA and MPB are listed in the Experimental section.

## RESULTS AND DISCUSSION

Table 2 shows the retention time and individualized MS parameters of serotonin and its deuterated internal standard, including MRM transitions, cone voltage, and collision energy.

Figure 2 shows the chromatography of serotonin and its internal standard from an extracted method blank (A) and a 50 ng/mL calibration standard (B) using the ACQUITY UPLC HSS PFP Column. The serotonin peak seen in the method blank represents the endogenous concentration of serotonin (29.7 ng/mL) contained in the pooled urine used to create the calibration curve. The PFP column chemistry provided excellent retention and peak shape as well as baseline resolution from the endogenous, potentially interfering peaks that elute close to that of serotonin.

Analyte	RT (min)	MRM transitions (m/z)	Cone Voltage (V)	Collision Energy (eV)
Serotonin	2.24	177.1>160	22	10
		177.1>115	22	22
d4 Serotonin (IS)	2.24	181.1>164	22	10

Table 2. Mass spectral parameters used for analysis of serotonin.

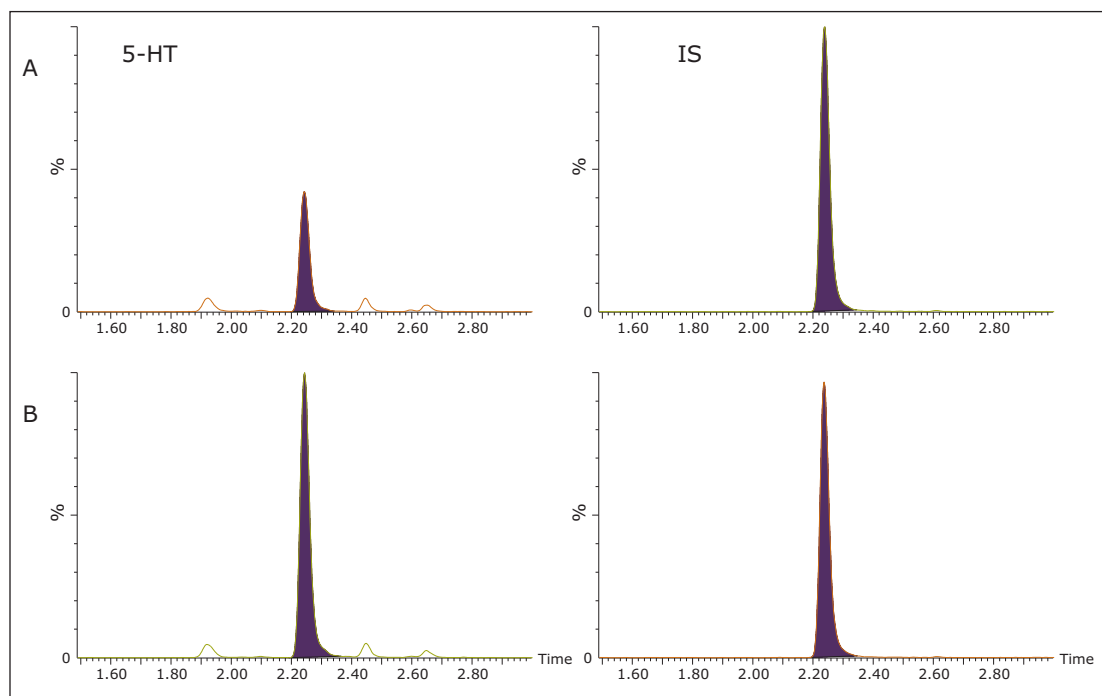


Figure 2. Chromatography of serotonin and its internal standard on the ACQUITY UPLC HSS PFP Column, 1.7  $\mu$ m, 2.1  $\times$  100 mm. A. Unspiked urine sample showing chromatography of endogenous serotonin (29.7 ng/mL). B. Representative 50 ng/mL calibration standard. Serotonin elutes at a retention time of 2.24 minutes. Chromatographic conditions are detailed in the Methods section.

## Recovery and matrix effects

Extraction recovery and matrix effects for urinary serotonin were 80% and -19%, respectively. The unique selectivity provided by the HSS PFP column not only provided the resolution of serotonin from endogenous interfering compounds, but also resulted in minimal matrix effects.

## Quantitative results

Calibration and quality-control samples were prepared via the standard-addition method by spiking a urine pool with known concentrations of serotonin. After data processing, the endogenous concentration was extrapolated from the resultant calibration curve and the information used to correct the actual calibration and QC concentrations. The urine pool used for calibration was found to contain 29.7-ng/mL of serotonin, so the calibration concentrations were changed from 5.0 to 500 to 34.7 to 529.7 ng/mL. The resultant calibration curve showed excellent linearity, with an  $R^2$  value of 0.9997. The quality-control samples ( $n = 6$ ), over-spiked at 7.5, 75, and 300 ng/mL, demonstrated excellent accuracy and precision (see Table 3). All QC values were within 3% of their target values, and all coefficients of variation were less than 2%. These data demonstrate that the method is linear, accurate, and precise over a measurement range that includes the expected values for normal and elevated urine samples.

QC Level (ng/mL)	Accuracy		
	Mean	S.D.	%RSD
7.5	99.9%	1.6%	1.6%
75	97.9%	0.4%	0.4%
300	97.3%	1.1%	1.1%
<b>Mean</b>	<b>98.4%</b>	<b>1.3%</b>	<b>1.3%</b>

Table 3. Quality-control results from extracted urine samples. Concentrations refer to the spiked concentration. Accuracies were calculated by comparing the result of the sum of the spiked concentration with the endogenous, calculated values obtained from the urine sample.

## CONCLUSIONS

The extraction and analysis of urinary serotonin for clinical research using the Oasis, mixed-mode, weak-cation-exchange (WCX) plates and an ACQUITY UPLC HSS PFP Column is detailed. Extraction resulted in low matrix effects and consistent recoveries that translated into excellent analytical precision. The unique selectivity provided by the HSS PFP column resulted in resolution of serotonin from endogenous, potentially interfering compounds and minimal matrix effects. Quantitative results showed a linear response across the measurement range (5 to 500 ng/mL) and excellent accuracy and analytical precision.

**For Research Use Only. Not for Use in Diagnostic Procedures.**

# Waters

THE SCIENCE OF WHAT'S POSSIBLE.®

Waters, ACQUITY UPLC, UPLC, Xevo, MassLynx, and The Science of What's Possible are registered trademarks of Waters Corporation. TargetLynx is a trademark of Waters Corporation. All other trademarks are the property of their respective owners.

©2014 Waters Corporation. Produced in the U.S.A. August 2014 720005152EN AG-PDF

**Waters Corporation**  
34 Maple Street  
Milford, MA 01757 U.S.A.  
T: 1 508 478 2000  
F: 1 508 872 1990  
www.waters.com