

## Performance of ACQUITY UPLC M-Class in Proteomics Nanoscale Applications

Christopher J. Hughes, Johannes P.C. Vissers, and James I. Langridge  
Waters Corporation, Wilmslow, UK

### APPLICATION BENEFITS

Operating at nanoscale flow rates in proteomics applications, the ACQUITY UPLC® M-Class System confers these benefits:

- Excellent chromatographic retention-time reproducibility, peak capacity, and sensitivity
- Demonstrated performance for both relatively simple and more complex tryptic peptide mixtures

### WATERS SOLUTIONS

ACQUITY UPLC M-Class System

SYNAPT® G2-Si

ProteinLynx Global SERVER™  
(PLGS) Software

### KEY WORDS

MPDS mixture 1, MPDS *E. coli*, MS<sup>E</sup>,  
HDMS<sup>E</sup>, UPLC

### INTRODUCTION

Nanoscale chromatography is established as the method of choice in bottom-up, or shotgun, proteomics experiments. It achieves superior sensitivity, compared with higher flow-rate separations, because of the reduced dilution effects of peptides of low stoichiometry present within the sample. When this scale of chromatography is coupled to a QToF mass spectrometer operating in the data-independent (DIA), data-dependent (DDA), or multiple-reaction-monitoring (MRM) acquisition mode, its higher peak-capacity separations yield enhanced results, namely, higher levels of protein/peptide identifications and lower detection and quantitation limits.

The ACQUITY UPLC M-Class System offers direct-flow separation for flow rates ranging from nanoscale to microscale, with an upper limit of 15,000 psi operating pressure. This higher pressure limit, compared with the nanoACQUITY® UPLC® System, permits the use of longer columns packed with sub-2- $\mu$ m particles, for maximum separation efficiency. It also enables higher flow rates when shorter columns are used for high-throughput analyses.

This application note demonstrates the salient performance characteristics of the ACQUITY UPLC M-Class System, reporting typical results from DIA HDMS<sup>E</sup> acquisitions of a complex, tryptic-peptide sample.

## EXPERIMENTAL

### Samples

- MPDS Mixture 1, which contains a tryptic digest of four proteins: alcohol dehydrogenase, bovine serum albumin, yeast enolase, and rabbit glycogen phosphorylase
- MPDS *E. coli*

### Method conditions

#### LC conditions

LC system:	ACQUITY UPLC M Class
Trapping column:	ACQUITY UPLC M-Class Symmetry® C <sub>18</sub> , 100Å, 5 µm, 180 µm x 20 mm, 2G, V/M Trap Column ( <a href="#">p/n: 186007496</a> )
Trapping conditions:	Isocratic delivery of aqueous 0.1% formic acid, at 5 µL/min for five minutes
Analytical column:	ACQUITY UPLC M-Class HSS T3, 100Å, 1.8 µm, 75 µm x 250 mm Column ( <a href="#">p/n: 186007474</a> )
Column temperature:	35 °C
Elution flow rate:	300 nL/min
Mobile phase A:	Aqueous 0.1% formic acid
Mobile phase B:	0.1% formic acid in acetonitrile
Gradient:	1% to 30% B linear gradient, in 30 or 90 min

#### MS conditions

Instrument:	SYNAPT G2-Si
Acquisition mode:	MS <sup>E</sup> and HDMS <sup>E</sup> modes
Mass range:	50 to 2000 Da
Integration time:	0.2s (MS <sup>E</sup> ) or 0.5s (HDMS <sup>E</sup> )

#### Data management

ProteinLynx Global SERVER (PLGS) Software  
Spotfire (Tibco, Boston, Massachusetts, USA)

## RESULTS AND DISCUSSION

As measured by both retention-time reproducibility and peak width, chromatographic performance is a central factor in the analysis of complex mixtures. Data acquisitions that rely on quantitative, label-free strategies also rely on retention-time reproducibility to identify and quantify analytes from multiple injections. Furthermore, narrow peak widths, which result from operating at UPLC pressures and from using columns packed with smaller particles, contribute to higher peak-capacity separations. More effective separations augment the data-processing algorithms used for label-free quantitation. Such separations better resolve ambiguity, and they elucidate closely associated precursors and fragment ions because of less interference from co-elutions.

To measure the retention-time reproducibility and peak widths of the ACQUITY UPLC M-Class System, six repeat injections of MPDS Mixture 1 were made and the digest separated using a 30-minute gradient. Their chromatograms appear in Figure 1. Figure 2 shows standard deviations of the 84 most intense peptides, compared with their average retention time. All of these peptides show an excellent standard deviation of less than or equal to 2 seconds. Figure 3 shows the frequency distribution of the chromatographic peak widths of the same peptides. Most peaks elute with a full-width at half-maximum (FWHM) width of 3.0 to 3.6 seconds or a solvent volume of 18 nL, equating to a theoretical peak capacity of 213 for this separation.

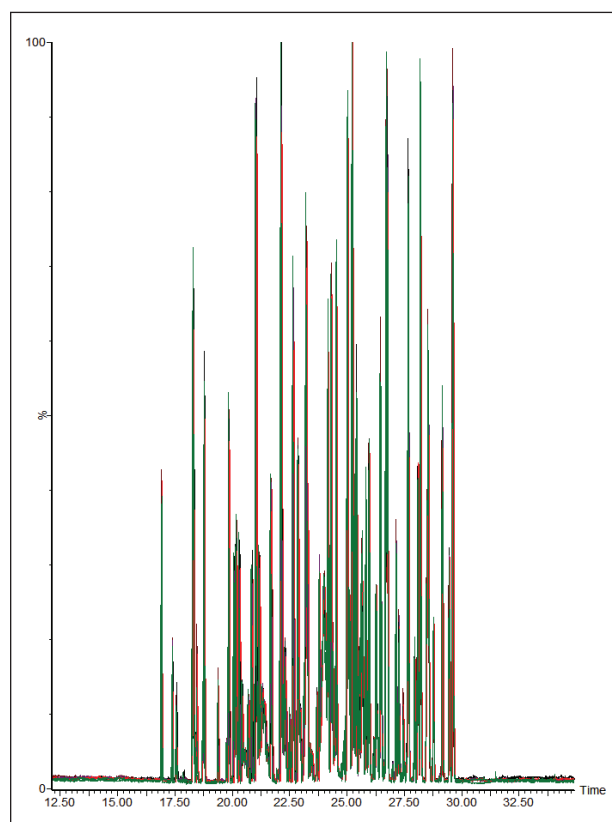


Figure 1. Overlaid chromatograms from six repeat injections of 25-fmol MPDS Mixture 1.

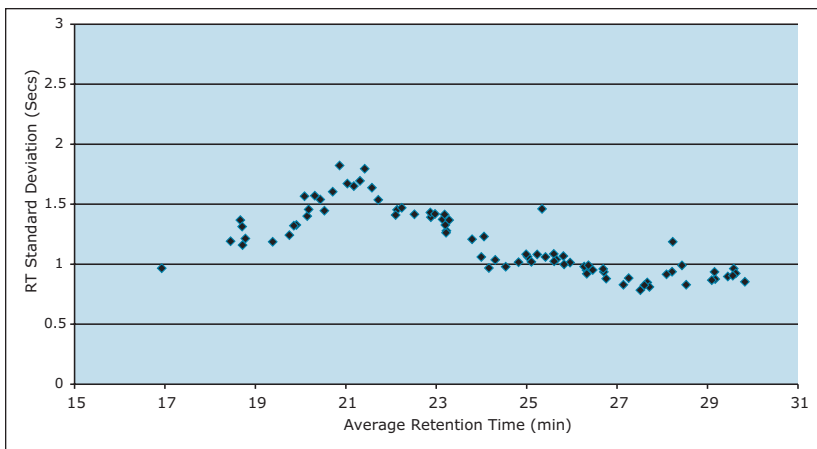


Figure 2. Retention-time reproducibility for the 84 most intense peptides from six repeat injections of 25 fmol MPDS Mixture 1, separated using a 30-minute gradient.

In a DIA HDMS<sup>E</sup> acquisition, fragments correlate with precursors according to their ion mobility as well as elution profiles. Samples analyzed in this way lead to higher protein identifications, compared with ToF-only MS<sup>E</sup> – that is, without ion-mobility separation. Figure 4 shows a typical chromatogram from the analysis of 100 ng of a relatively complex tryptic digest of cytosolic *E. coli*. Peaks elute in this separation with an average FWHM width of 0.17 min, leading to a theoretical peak capacity of 412. When processed in PLGS software, protein identifications exceeded 1100, with more than 20,000 peptides identified, as shown in Figure 5.

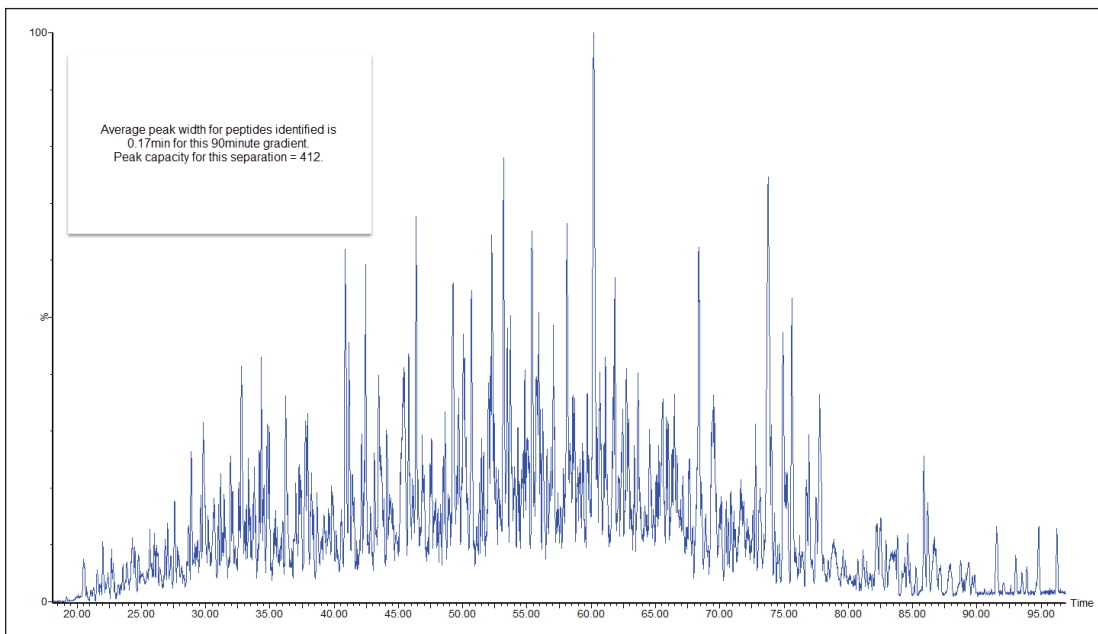


Figure 4. Typical HDMS<sup>E</sup> chromatogram from the injection of 100 ng MPDS *E. coli*.

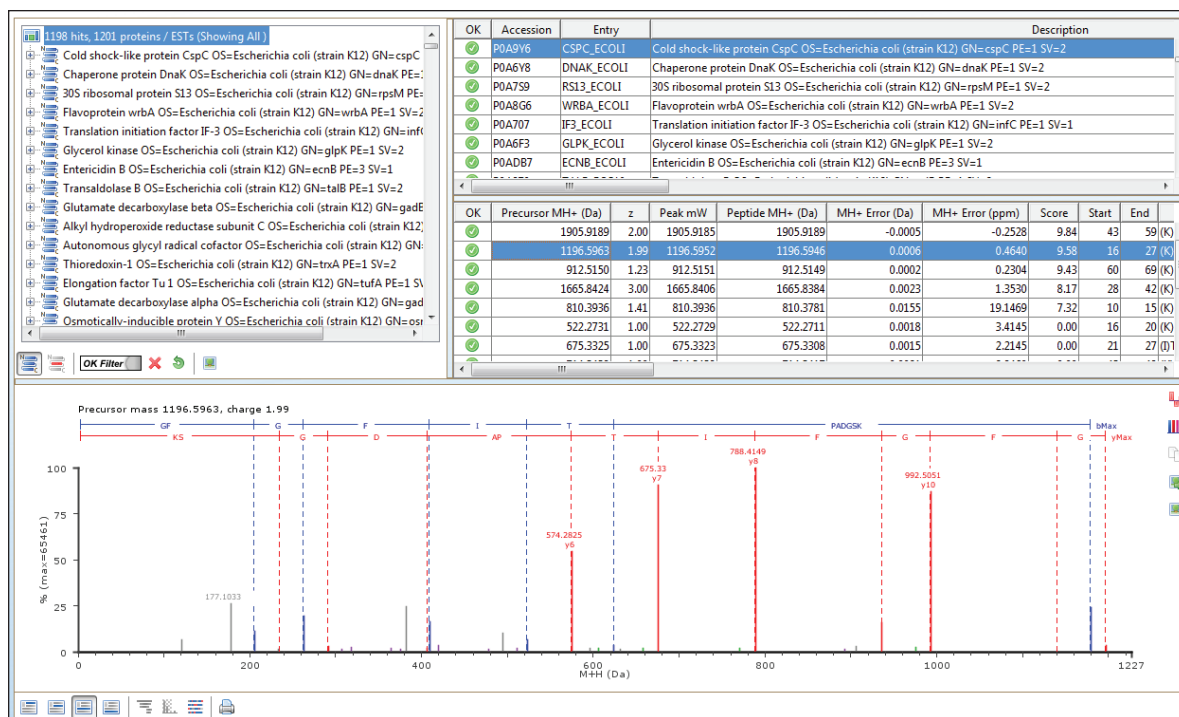


Figure 5. PLGS search results from the injections of 100 ng *E. coli*.

## CONCLUSION

This application note highlights the performance characteristics of the ACQUITY UPLC M-Class System operating at nanoscale flow rates, illustrating its utility in analyzing complex, tryptic-peptide mixtures. Retention-time reproducibility, with standard deviations of less than 2 seconds, is achieved with peak widths for most peptides of 3.6 seconds FWHM over a short gradient. For analyses of complex mixtures, the system coupled to a SYNAPT G2-Si Mass Spectrometer operating in HDMS<sup>E</sup> mode has been shown to achieve excellent protein identification rates.

# Waters

THE SCIENCE OF WHAT'S POSSIBLE.®

Waters, The Science of What's Possible, ACQUITY UPLC, nanoACQUITY, UPLC, Symmetry, and SYNAPT are registered trademarks of Waters Corporation. ProteinLynx Global SERVER is a trademark of Waters Corporation. All other trademarks are the property of their respective owners.