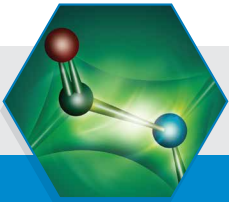


Platform Solutions for Your Biopharma Analyses

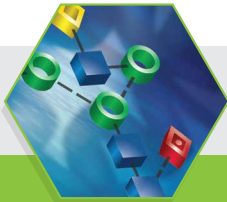
Patients count on your team to ensure the safety, efficacy, and quality of life-changing medicines. You can count on us for reliable consumables that will be there when you need them.

Get the right answers the first time with solutions designed and QC-tested for your analytes.



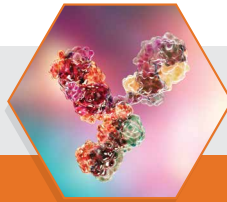
Primary Structure

Intact Mass and Subunit Analysis by Reversed-Phase Chromatography
Peptide Mapping by Reversed-Phase Chromatography
Quantitative Amino Acid Analysis by Reversed-Phase Chromatography and Sample Preparation



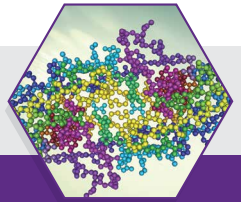
Glycosylation

Released N-Glycan and Intact/Subunit Analysis by HILIC/Mixed-Mode Chromatography and Sample Preparation



Purity/Impurity

Aggregate and Fragment Analysis by Size-Exclusion Chromatography (SEC)



Charge Variants

Physicochemical Fractionation by Ion-Exchange Chromatography (IEX)

Waters complete product portfolio supports your platform methods from discovery through routine manufacturing.

Application-Specific Columns and Column Kits*	Standards, Reagents, Mobile Phases, and Additives	Workflow Kits and Automation
Purposeful performance	Method control with flexibility	Deployable and standardized
UPLC <2 µm	UHPLC 2.x – 3 µm	HPLC 3.5 µm – 10 µm
Need for performance	Need for flexibility	Need for dependability
48 – 96 samples	8 – 24 samples	1 – 8 samples
High throughput	Mid throughput	Low throughput

*Kits include column and standard.



RapiGest™ SF

Andrew
the pipetting robot

AccQTag™ Ultra
UPLC Amino Acid Analysis

RapiFluor-MS™

IonHance™

GlycoWorks™

Eliminate doubt at any scale, for any attribute, at any point in your drug development journey.



Waters, The Science of What's Possible, MaxPeak, ACQUITY, UPLC, XBridge, XSelect, BioResolve, RapiGest SF, Andrew+, AccQ-Tag, RapiFluor-MS, IonHance, and GlycoWorks are trademarks of Waters Corporation. All other trademarks are the property of their respective owners. 7200078668EN October 2022 IH-PDF

waters.com/bioadvisor

Waters
THE SCIENCE OF WHAT'S POSSIBLE.™