

# Power Up Your Lab With Connected Devices

Streamline and take your lab workflows to the next level by combining intuitive method programming with cutting-edge hardware. An ecosystem of connected devices working with OneLab empower you with the highest level of reproducibility, traceability and productivity - whether you are fully automating methods, executing them manually, or doing something in between.

Vibration free orbital shaking from 200-3000 rpm available for both tubes and plates

Obtain reproducible runs whether you are executing methods manually, with guided pipetting or with full automation

Obtain rigorous homogenizations during critical dilution steps - even with large volumes



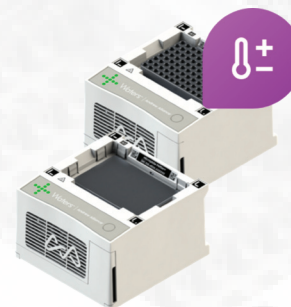
## Shaker

*Versatile orbital shaking*

Consistent temperature control between 0-99 °C

Two different models for optimal temperature transfer to conical and flat-bottomed plates

Ready when needed for critical steps with intelligent pre-heating or pre-cooling



## Peltier

*Active temperature control*



## Extraction

*Hands-free SPE, made easy*

Fully hands-free SPE made possible by combining the Extraction+ device with the Andrew+ robot

Automatic control of pressure profiles for consistent and reproducible SPE methods - even with the most complex matrices

Wide range of compatible labware, from 96-well extraction plates to 1 cc, 3 cc and 6 cc cartridges

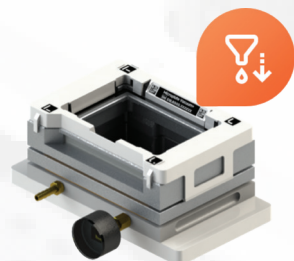
# OneLab

design & execute

Simplifying plate-based SPE with automatic pump control

Automation-friendly vacuum manifold with easy to read pressure gauge

Perfect for guided manual workflows with Pipette+



## Vacuum

*Simplified plate-based SPE*

Elevating magnetic bead-based extractions with automatic magnetic shelf movement for bead capture and resuspension

Simple and reliable purification method for genomic, plasmid and mitochondrial DNA, RNA proteins and cells

Three models for different working volumes: PCR plates (up to 230 uL), Deepwell Plates (up to 2 mL), and 50 mL Centrifuge tubes



## Magnet

*Scalable bead-based purifications*



## Heater-Shaker

*The Ultimate and Adaptable 2 in 1*

Vibration-free orbital shaking from 200 to 2500 rpm

Optimal temperature transfer to various plate types via dedicated adaptors - from room temperature to 99 °C

Designed for use with automation thanks to accurate zero positioning

All compatible with



See them in action

## GET THE MOST OUT OF YOUR CONNECTED DEVICES

### Intuitive programming of complex methods:

OneLab software is your method wizard - from easy experiment design to execution. Write your methods easily by dragging, dropping, copying, pasting, selecting actions and much more through an intuitive graphical interface.



### All your methods in one place.

### Accessible. Reproducible. Traceable.

Using connected devices directly during manual method validations allows for "automatable" and reproducible method development before automation even becomes part of the picture. Scale up and fully automate later without having to re-write your methods, while maintaining traceability and compliance along the way.



### Microplate and Column Grippers:

Enable seamless, automated consumable movement between Connected Devices and Dominos... with no programming necessary.



Go to [onelab.com/signup](https://onelab.com/signup) and try out OneLab; It is 100% free of charge.

## Ordering Information

	Product Description	Part Number
<b>Shaker</b> 	Microplate Shaker+	176004577
	Tube Shaker+ w/ 16x90 mm Tube Adaptor	176005077
	Tube Shaker+ w/ 12x75 mm Tube Adaptor	186010422
	Tube Shaker+ w/ 5 mL Tube Adaptor	176005078
<b>Heater-Shaker</b> 	Heater-Shaker+ w/ Low-Profile PCR Plate Adaptor	176005079
	Heater-Shaker+ w/ High-Profile PCR Plate Adaptor	176005080
	Heater-Shaker+ w/ Deepwell Plate Adaptor	186010426
<b>Vacuum</b> 	Microplate Vacuum+	176004579
	110 V Vacuum Manifold Kit - Includes Manifold, Shims and Pump	176004580
	220 V Vacuum Manifold Kit - Includes Manifold, Shims and Pump	176004581
<b>Peltier</b> 	Microplate Peltier+	176004852
	96-PCR Peltier+	176004584
<b>Magnet</b> 	96-PCR Magnet+	176004850
	Deepwell Magnet+	176004854
	50mL Tube Magnet+	176004851
<b>Extraction</b>  	Extraction+ Base Kit with Gripper	176005201
	Extraction+ Base Kit without Gripper	176005202
	Extraction+ Plate Kit	176005203
	Extraction+ 1 cc Cartridge Kit	176005204
	Extraction+ 3 cc Cartridge Kit	176005205
	Extraction+ 6 cc Cartridge Kit	176005206
	Microplate Gripper Tool	186009776
Column Gripper Tool	186010179	



Get a quote today