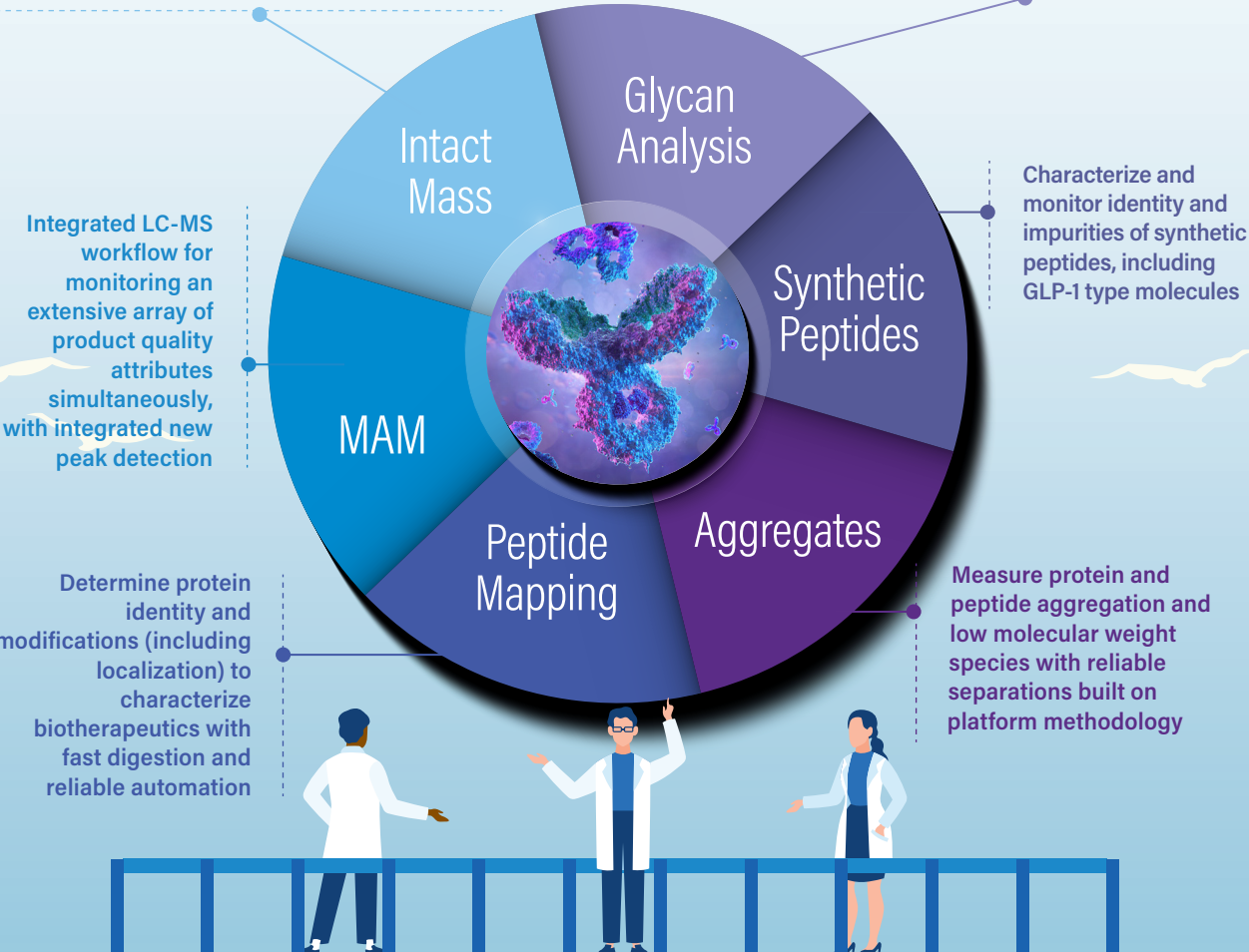


Protein and Peptide Attribute Monitoring Workflows

BRIDGING THE GAP TO CONNECT PRODUCT ATTRIBUTES AND PROCESS KNOWLEDGE

Efficient software workflows for intact and subunit protein analysis with mass confirmation, global profiling, bioconjugate DAR measurement, glycosylation, charge variant analysis and oxidation monitoring

Streamlined, automated analytical workflow for released glycan profiling and characterization with 2-AA, 2-AB and RapiFluor-MS™ labels



EFFORTLESS REPRODUCIBILITY



Optimized consumables and automation for consistency and robustness

RELIABLE DATA GENERATION



unknown samples
control sample
SST

Routine instrumentation and informatics to generate robust and reproducible LC and MS data

AUTOMATED INTERPRETATION



peptide attribute list

Streamlined data processing with dedicated, compliance ready informatics apps

ACCELERATED DEVELOPMENT & RELEASE



targeted monitoring
%relative quan
NPD

Confident product understanding with customizable results reporting and pass/fail indication for GMP analysis

