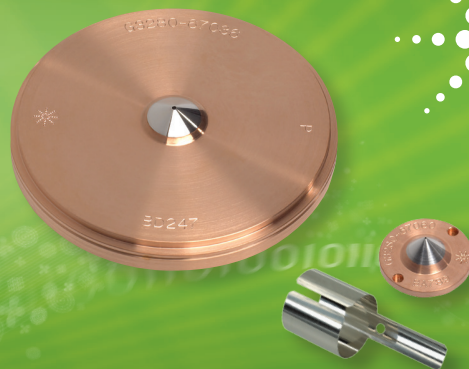


# SAVE MONEY AND REDUCE YOUR ENVIRONMENTAL IMPACT WITH THE AGILENT PLATINUM CONE TRADE-IN PROGRAM

The Measure of Confidence



**Agilent ICP-MS Platinum Cones – cut costs & go green by returning your used cones**

Agilent ICP-MS has set the benchmark for quadrupole ICP-MS performance and size. But even the best equipment needs maintenance for maximum performance.

Your ICP-MS relies heavily on the size, shape, and condition of the sampler and skimmer cones. So don't let cone replacement costs affect your performance outcomes. Immediately begin to remedy the cost of replacement cones using the Agilent platinum cone trade-in program.

## **Reduce the cost of platinum cone and torch shield replacements**

Despite the longevity of platinum cones and torch shield plates, extended use will eventually affect performance. Many users keep used cones tucked away in a lab drawer on the off chance they will be reused, but that rarely happens. Now you have the chance to recycle used cones and torch shield plates – and save some money with trade-in credits from Agilent.

## **Reduce your lab's environmental impact**

The trade-in program lessens your lab's environmental impact, conserves valuable platinum supplies, and delivers a direct cost savings to your lab. Customers purchasing replacement platinum cones and torch shield plates for their Agilent 7500/7700/7900 and 8800 Series ICP-MS can receive a trade-in credit for each used platinum cone or torch shield plate returned to Agilent.\*

**NOW  
ACCEPTING:**  
cones and torch  
shield plates from  
Spectron and Glass  
Expansion

\*This Pt cone trade-in program is available in North America, EMEA, Japan, Australia, New Zealand, Singapore, Malaysia, Thailand, and South Korea. Visit [agilent.com/chem/PtCone](http://agilent.com/chem/PtCone) to see if this is available in your region or contact your local Agilent Representative.



**Agilent Technologies**



## The Agilent platinum cone trade-in credit program

It's an easy and economical way for your lab to save money, reduce its environmental impact, and improve the overall reliability of its results.

### How it works

When you need to replace a platinum cone or torch shield plate, contact your local Agilent Representative or Agilent Authorized Distributor to begin the trade-in process. All you need to do is clean the cones and follow the simple instructions to return the used cones or torch shield plates to Agilent. Once Agilent has confirmed the type and quantity of the products received, a credit will be applied directly to your account. The trade-in credit could range from approximately US \$90 to over US \$800 depending on the type of product, region, and current platinum market value.

### Qualifying product part numbers\*\*

AGILENT PART NUMBER	AGILENT DESCRIPTION	GLASS EXPANSION PART NUMBER
<b>7900 Skimmer Cones</b>		
G8400-67201	Pt Skimmer Cone	
G8400-67202	Pt Skimmer Cone, Nickel Base	
<b>7700/8800 Skimmer Cones</b>		
G3280-67060	Pt Skimmer Cone	AT7708X-Pt
G3280-67063	Pt Skimmer Cone, Nickel Base	AT7708X-Pt/Ni
G3280-67064	Pt Skimmer Cone, Copper Base	AT7708S-Pt
G3280-67065	Pt Skimmer Cone, Nickel Base	AT7708S-Pt/Ni
<b>7700/8800/7900 Sampling Cones</b>		
G3280-67036	Pt Sampling Cone	AT7706-Pt
G3280-67056	Pt Sampling Cone, 18 mm Insert	AT7706A-Pt
<b>7500 Skimmer Cones</b>		
G1820-65237	Pt Skimmer Cone	AT1008-Pt
G1833-65092	Pt Skimmer Cone, Copper Base	AT1008C-Pt
G1833-65132	Pt Skimmer Cone, Copper Base	AT1008CS-Pt
G3270-60106	Pt Skimmer Cone, Nickel Base	AT1008CS-Pt/Ni
<b>7500 Sampling Cones</b>		
G1820-65239	Pt Sampling Cone, 10 mm Insert	AT1006-Pt
G1820-65360	Pt Sampling Cone, 18 mm Insert	
<b>7500/7700/7900/8800 Pt Torch Shield Plate</b>		
G1833-65419	Shield Plate, Long Life, ICP-MS. 1/pk	AT5004

For trade-in values and more details about this program visit:

[agilent.com/chem/PtCone](http://agilent.com/chem/PtCone)

Find a local Agilent Customer Center in your country or an Agilent Authorized Distributor at:

[agilent.com/chem/contactus](http://agilent.com/chem/contactus)

Also includes corresponding Spectron cones with an Agilent "Spark"

\*\*Some conditions apply. Visit [agilent.com/chem/PtCone](http://agilent.com/chem/PtCone) for details or contact your local Agilent Representative.

This information is subject to change without notice.

© Agilent Technologies, Inc. 2013  
Printed in the USA, September 16, 2014  
5991-0551EN



**Agilent Technologies**