

IC Application Note No. S-15

Title: Chlorite and chlorate in tap water

Summary: Determination of chlorite and chlorate in tap water using anion chromatography with conductivity detection after chemical suppression.

Sample: Tap water spiked with chlorite and chlorate

Sample Preparation: -

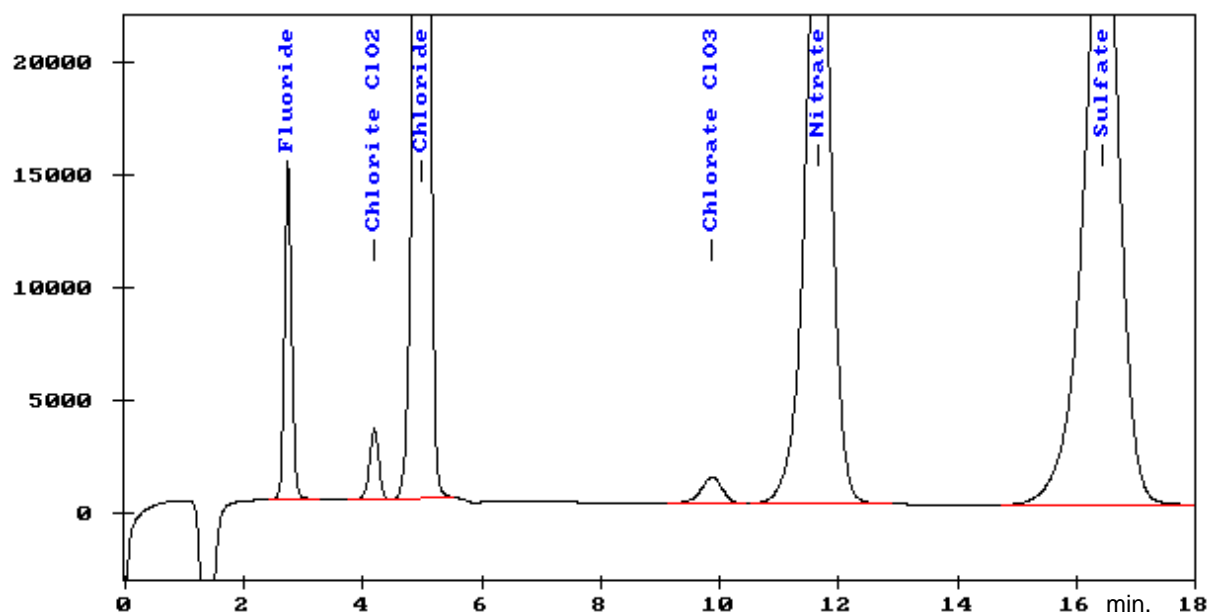
Column: 6.1006.100 Metrosep Anion Dual 2

Eluent: 2.0 mmol/L sodium hydrogencarbonate,
1.3 mmol/L sodium carbonate

Suppressor: Metrohm Suppressor Module (MSM, 50 mmol/L H₂SO₄)

Flow: 0.8 mL/min

Injection Volume: 20 µL



Results:

Chlorite, Chlorate
mg/L

0.5