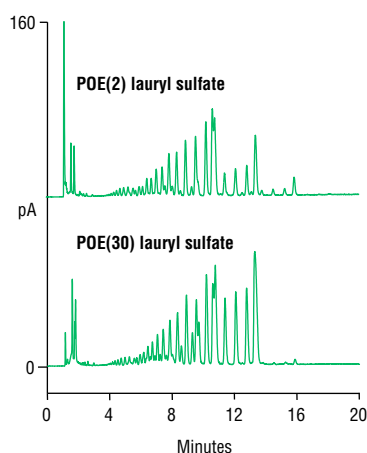
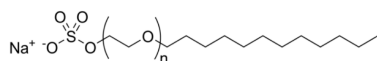


Profiles of Ethoxylated Lauryl Sulfates Using Acclaim Surfactant Plus



Column: Thermo Scientific™ Acclaim™
 Surfactant Plus, 3 µm
 Dimensions: 3.0 × 150 mm
 System: Thermo Scientific™ Dionex™
 UltiMate™ 3000 RSLC system
 Mobile Phases: A: Acetonitrile
 B: 100 mM Ammonium acetate, pH 5.2
 Gradient times: -8 0 15 20
 %A: 45 45 75 75
 %B: 55 55 25 25
 Temperature: 30 °C
 Flow Rate: 0.6 mL/min
 Inj. Volume: 2 µL
 Detection: Thermo Scientific™ Dionex™ Corona™*ultra*
 Charged Aerosol Detector
 (Gain = 100 pA; Filter = med;
 Nebulizer temperature 20 °C)
 Sample: 10 mg/mL each



PB20637_E 10/12S

Laureth sulfate (alkyl polyethoxy sulfate) is a popular class of surfactants featuring good water solubility, high foam, and good cleaning properties. They are used in many personal care products such as shampoo and hand soap. Different grades feature various mixtures of C12, C14 and C16 alkyl chains, with varying degrees of ethoxylation. The Acclaim Surfactant Plus column provides detailed profiles based on both hydrophobe and degree of ethoxylation for each hydrophobe.