

## Assay Analysis for Cefalexin (EP- method):

### SAMPLE PREPARATION:

**Reference solution-a:** Dissolve 50 mg of Cefalexin monohydrate in water and dilute to 100 ml with water.

**Reference solution-b:** Dissolve 10 mg of Cefradine in 20 ml of reference solution (a) and dilute to 100 ml with water.

### CHROMATOGRAPHIC CONDITIONS:

**Instrument:** UltiMate 3000 LC

**Column:** Acclaim 120-C18 (4.6\*250mm, 5 um, p/n 059149, lot no.:018-01-152)

**Mobile phase A:** Methanol: Acetonitrile: 13.6gm/lit solution of potassium Dihydrogen phosphate: Water (2:5:10:83 v/v/v/v)

**Separation Mode:** Isocratic

**Column temperature:** 25°C

**Flow rate:** 1.5 mL/min

**Injection Volume:** 20 µl

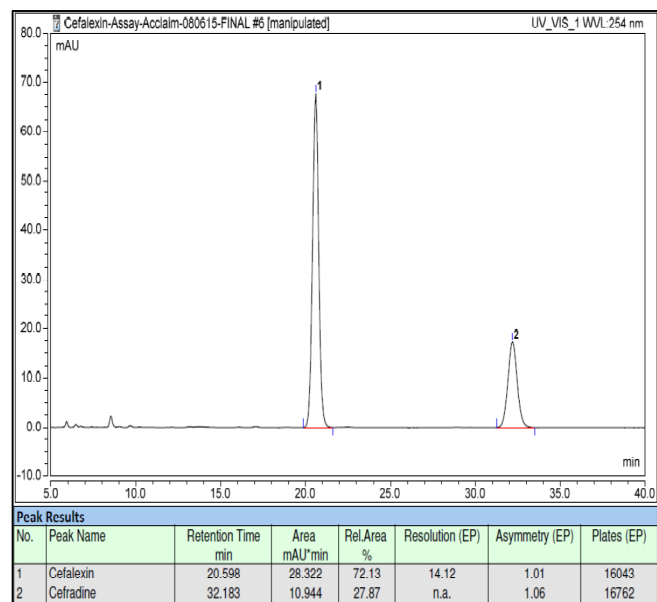
**Detector wavelength:** UV 254nm

**Run Time:** 40 min

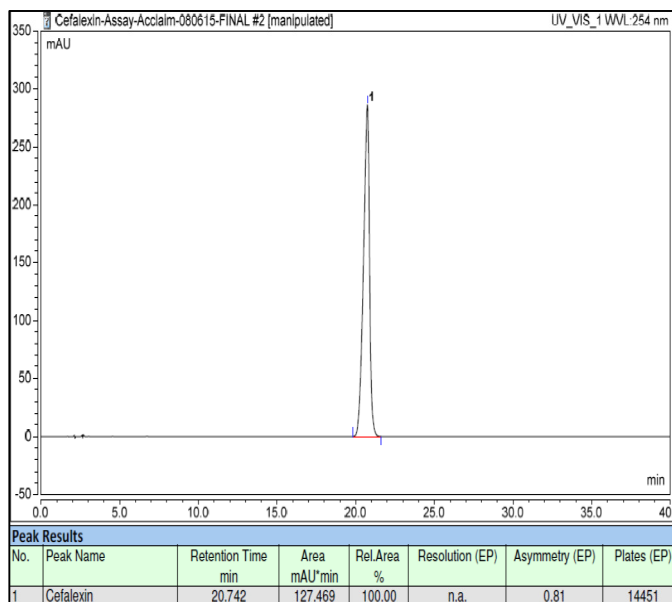
### System Suitability Results:

Sr. No.	Parameters	EP Criteria	Obtained Results
1	Resolution between Cefalexin and Cefradine	Minimum 4.0	14.12

### CHROMATOGRAMS:



Reference solution –b (System Suitability)



Reference solution-a