

Installation guide

IsoMist for Agilent 5100 ICP-OES

BEFORE YOU START

Congratulations on your purchase of your new IsoMist.

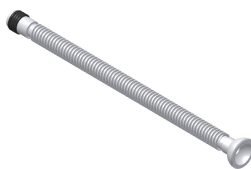
Please check to ensure your IsoMist Kit contains the following items: -

Item No.	Part Number	Description	Qty per Kit
1		IsoMist ROL pack	1
2	G8010-68011	Transfer tube	1
3		Clamp	1

Item 1



Item 2



Item 3



Note!

IsoMist pack (item 1) contains all the necessary items needed to operate the IsoMist including operation manual and software.

Operation manual: Will explain how to operate and maintain your IsoMist.
It is advised, you familiarize yourself with this manual prior to installing the IsoMist.

Software: To monitor IsoMist and modify its settings, you will need to install IsoMist software to your host PC. Refer to the *Getting Started* section of your IsoMist manual.
It is recommended the IsoMist software be installed prior to installing the IsoMist.

ISOMIST INSTALLATION

To install the IsoMist with your ICP-OES, complete the following steps

1. Disconnect all tubing from the spray chamber.
Remove the nebulizer – This will be required at a later stage.
Remove the spray chamber; this is not required, store in a safe place.



Agilent 5100 ICP-OES



Step 1

Installation guide

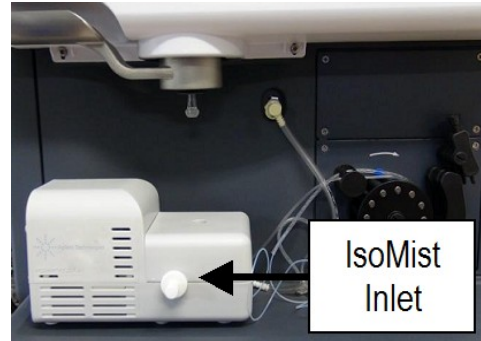
IsoMist for Agilent 5100 ICP-OES

INSTALLATION (CONTINUED)

2. Connect (push-on) drain tube (from IsoMist Pack) to the IsoMist drain (underside).
3. Position the IsoMist with your ICP-OES - Below torch connection, with cooling fan facing outwards and IsoMist Inlet facing the peristaltic pump.

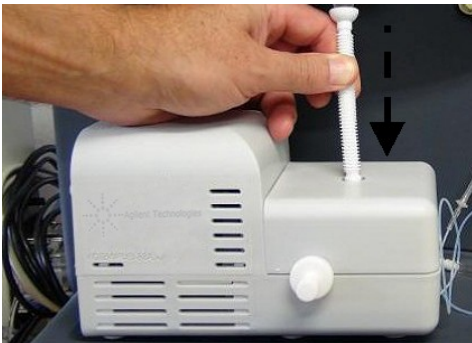


Step 2. (Underside of IsoMist)



Step 3.

4. Connect (push-on) transfer tube (Kit item 2) to IsoMist outlet
5. Connect the socket-end of transfer tube to the (ball-end) of ICP-OES torch. Then fix ball/socket connection using the clamp (Kit item 3).

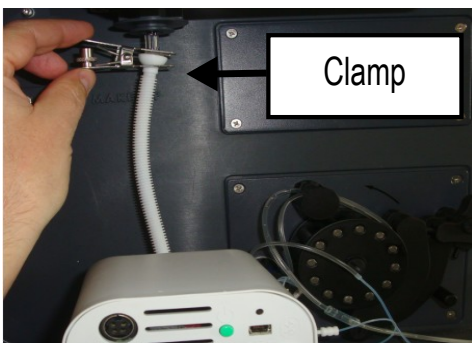


Step 4.

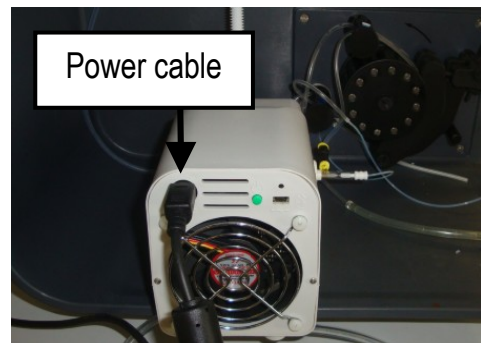


Step 5.

6. Route drain tube (from IsoMist) through the peristaltic pump as normal. Remove Helix plug from IsoMist inlet, insert nebulizer and connect all tubes as normal.
Tip! For guide to Helix fitting, refer IsoMist Manual / Getting Started / Helix Fitting / Nebulizer Connection
7. Electrical cables;
Connect power cable to IsoMist, refer IsoMist operation manual.
USB cable; only connect this cable if you intend to communicate with the IsoMist via USB.



Step 6.



Step 7.

Finished! IsoMist connections are now complete - The IsoMist is ready to use, refer operation manual.