

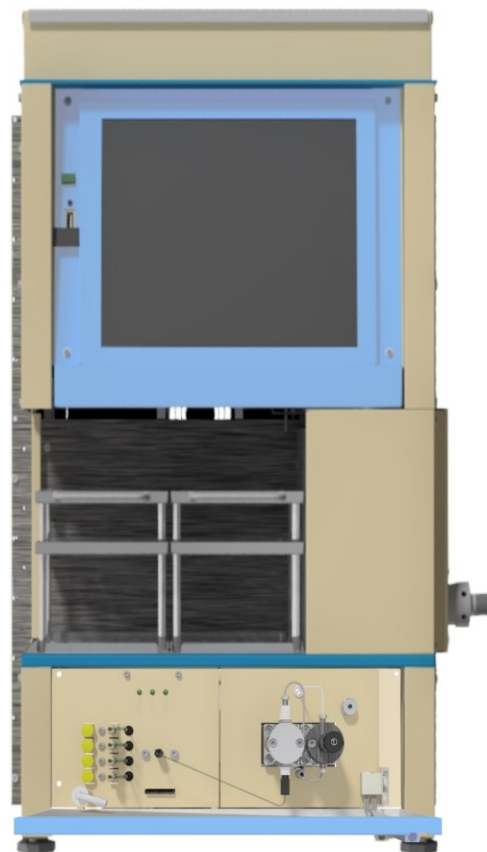
ECS08 P

COMPACT SEMI-PREPARATIVE SYSTEM

High effective Compact semi-preparative system containing **UV-VIS DAD detector, analytical gradient pump with degasser, automatic inject valve and fraction collector**. Detector allows absorbance measuring on four wavelengths at the same time or scanning through entire spectra.

System is controlled by built-in PC and touch screen.

Modular solution allows to configure the unit according to customer needs. It can be equipped with one of three detectors with wavelength range 200 – 800 nm and also with a pump with flow rate up to 10 ml/min.



SPECIFICATION

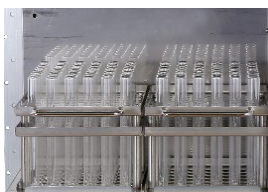
TOY18DAD 800L DETECTOR

It is UV-VIS diode array detector, which allow measuring absorbance of **four wavelengths in range of 200-800 nm simultaneously in one cell** just as scanning of whole spectra. Standardly is assembled with analytical cell HPLC10 L, but other cells are available.



ECF2096 FRACTION COLLECTOR

Fractions are collected according to chosen method which is simply created using touch screen. Racks for 8, 21, 40 ml tubes, 60 ml vials or 12 funnels.

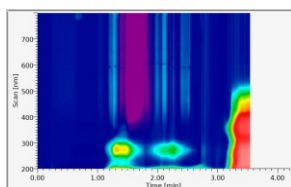


AUTOMATIC INJECT VALVE

Valve is driven by a step motor and it is automatically switched by software. System also allows manual sample injection by opened column.

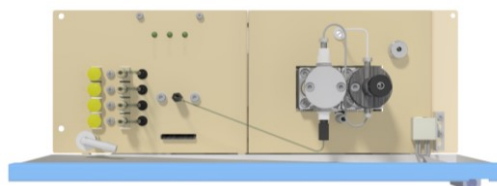
SYSTEM PC INFO

Installed industrial PC with Intel Atom 4 core processor. OS Linux, Touch screen 12,1" 1024 x 786, SW QUEEN controls: gradient, flow rate, wavelengths, fractions collection etc. Remote administration is available. Possibility of measuring at four wavelengths at the same time or scanning through entire spectra. Furthermore, the possibility of **displaying 3D data**.



ECP2010 ANALYTICAL HPLC PUMP

Modified for compact system, **analytical gradient pump** with degasser and with flow rate up to **10 ml/min** (40 MPa, 5082 PSI). Unit software includes new learning algorithm for pulsation suppression and many testing and diagnostic functions. Four gradient valves allow to change mobile phases without bottles alternation.



TECHNICAL PARAMETERS:

Interface	3xUSB, 2xLAN, RS232
Power supply	100 - 240 V AC
Power input	490 W
Dimensions (W x H x D)	500 x 678 x 482 mm (19.69 x 26.69 x 18.98")
Weight	55 kg (121.30 lb)