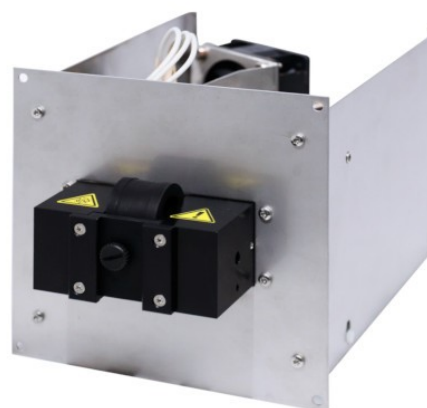


TOY18DAD 400 U

TWO CHANNEL UV DETECTOR
FOUR CHANNEL UV DETECTOR
SCANNING UV DETECTOR



are **OEM built-in** UV detectors suited for preparative and flash chromatography with diode array (**DAD**) in range **200 – 400 nm**. These detectors are offered in the following versions:

Two Channel version measures at **two wavelengths simultaneously** with possibility to see **current scan**.

Four Channel version measures at **four wavelengths simultaneously** with possibility to see **current scan**.

Scanning version measures at **four wavelengths simultaneously** or **sends scan with speed 20 Hz** which allows to create **3D picture**.

More wavelengths or scan are used in liquid chromatography to **verify purity of analyzed samples** or in situations when some peaks absorb on different wavelengths.

The unit is supplied with **AMY17 PCB** board of dimensions 100 x 160 mm (3.94 x 6.30 in). It powers the lamp and control the unit.

Most important features of TOY18DAD U detectors:

- small dimensions
- **built-in lamp working hours counter**
- **easy replacement of flow cell**
- **measuring at more wavelengths simultaneously**
- **sophisticated diagnostic software**

To the AMY17 board can be optionally connected:

- Analog output board
- LAN and USB board
- Display with keyboard
- Leakage sensor

SPECIFICATION

	Two Channel	Four Channel	Scanning
Part Number	TOYU010Y	TOYU020Y	TOYU030Y
Wavelength range	200 - 400 nm (128 elements on CCD)		
Number of channels (Signals)	2	4	4
Scan	Informative 200 – 400 nm	Informative 200 – 400 nm	200 - 400 nm, 20 Hz, step 1 nm
Typical spectral half-width	10 nm		
Accuracy of adjustment / Reproducibility	± 1 nm /±0.5 nm		
Noise level at test cell (254 nm, TC 0.75s)	± 5 x 10 ⁻⁵ AU		
Drift at test cell (254 nm after 1 h)	1 x 10 ⁻³ AU/hr		
Materials in contact with mobile phase	FEP, fused silica, stainless steel, PEEK		
Time constant (T63)	0.5 s, 0.75 s, 1.0 s, 2.0 s, 4.0 s, 8.0 s, 16.0 s, 0.2 s, 0.1 s		
Interface	RS232; optionally LAN or USB		
Power supply	24 -36 V DC		
Power input	48 W		
Dimensions (W x H x D)	220 x 120 x 110 mm (8.67 x 4.72 x 4.33 in)		
Weight	1.90 kg (4.19 lb)		

PREPARATIVE CELL PLCC 15 (SUPPLIED WITH UNIT)

Volume/Optical path (adjustable)	45 µl / 0.3 mm; 55 µl / 1.4 mm; 70 µl / 2.4 mm
Cell connecting	tubing with OD = 1/8", thread 1/4"-28
Maximal flow rate	500 ml/min (3 000 ml/min with PLCC 3L)