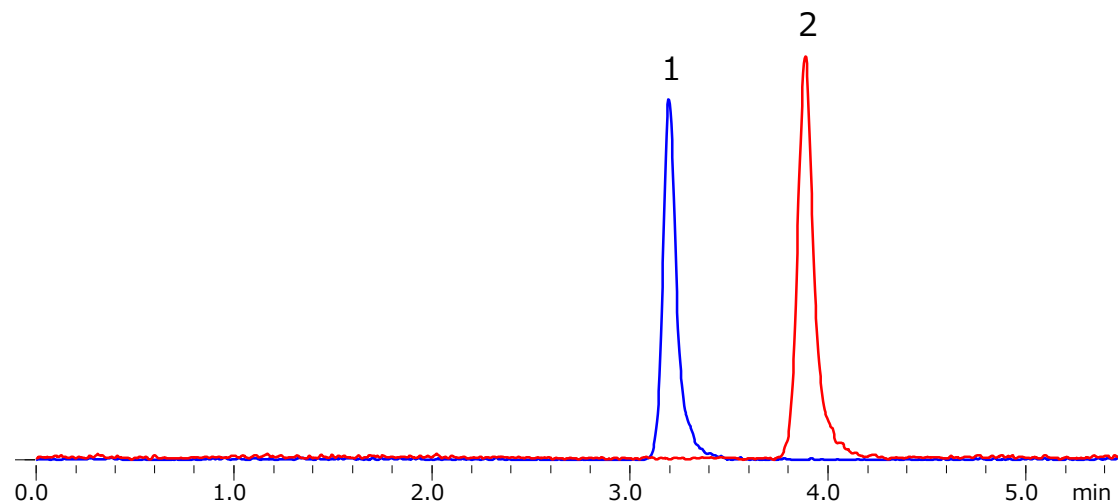


Shim-pack GIST PFPP Application

Analysis of Choline and Acetylcholine

Analyte:

1. Choline	100 µg/L
2. Acetylcholine	25 µg/L

**LC Conditions**

Column	: Shim-pack GIST-HP PFPP (3 µm, 150 x 2.1 mm I.D.) P/N: 227-30890-05
Mobile phase	: A) CH ₃ CN B) 0.1% HCOOH in H ₂ O A/B = 30/70, v/v
Flow rate	: 0.2 mL/min
Col. Temp.	: 40 °C
Detection	: LC/MS/MS (LCMS8030 Plus System, ESI, Positive, SRM)
Injection Vol.	: 1 µL
Sample	: Standard