

23.0331



Clarity™

ADVANCED CHROMATOGRAPHY SOFTWARE

PDA – PHOTO DIODE ARRAY

CLARITY EXTENSION

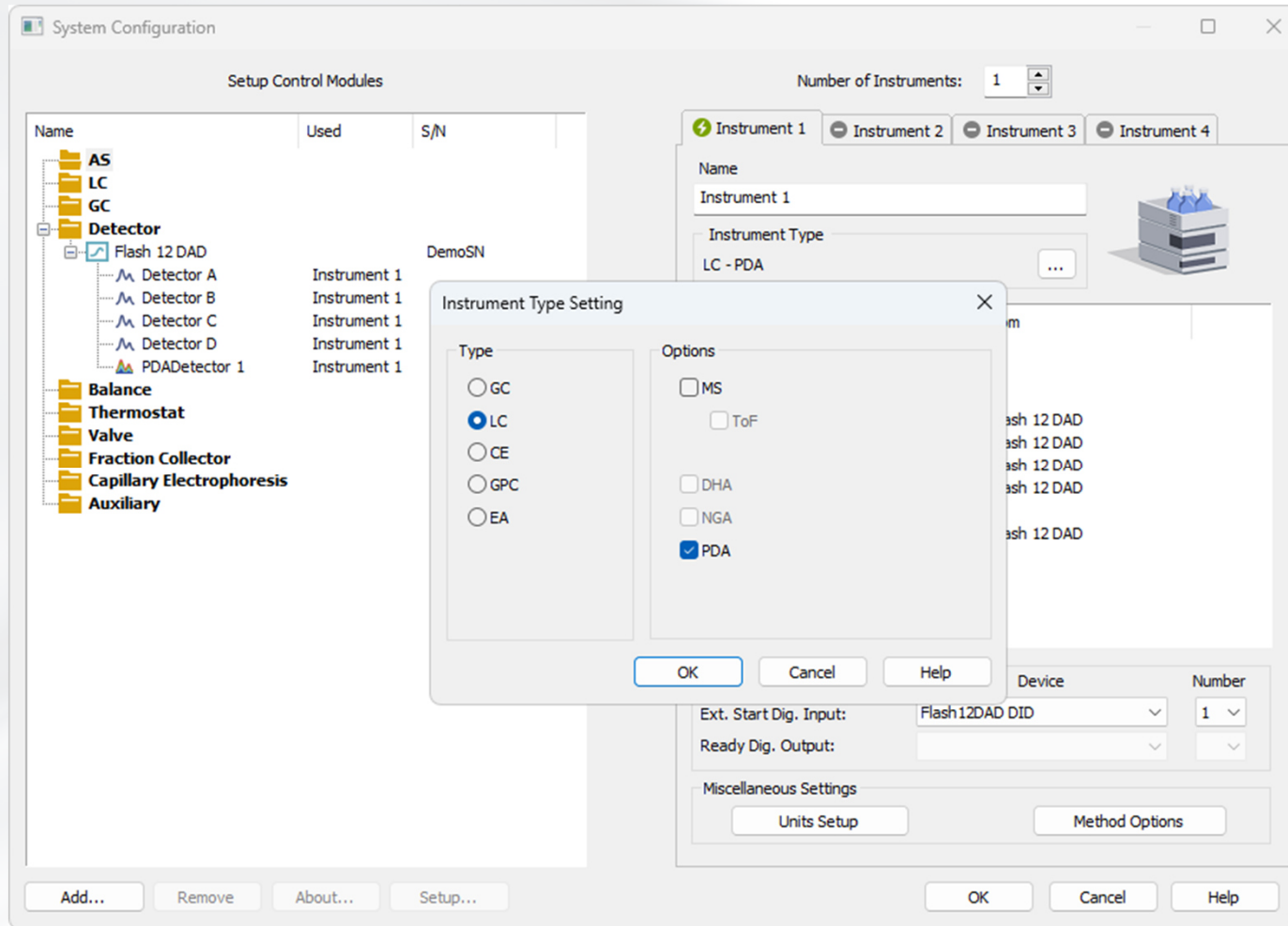
PDA EXTENSION

OVERVIEW

- Spectral data acquisition from selected detectors
- Import and export of spectral data in text format
- Isoplot and 3D plot for spectral data evaluation
- Peak purity evaluation
- Spectral library and spectral library search

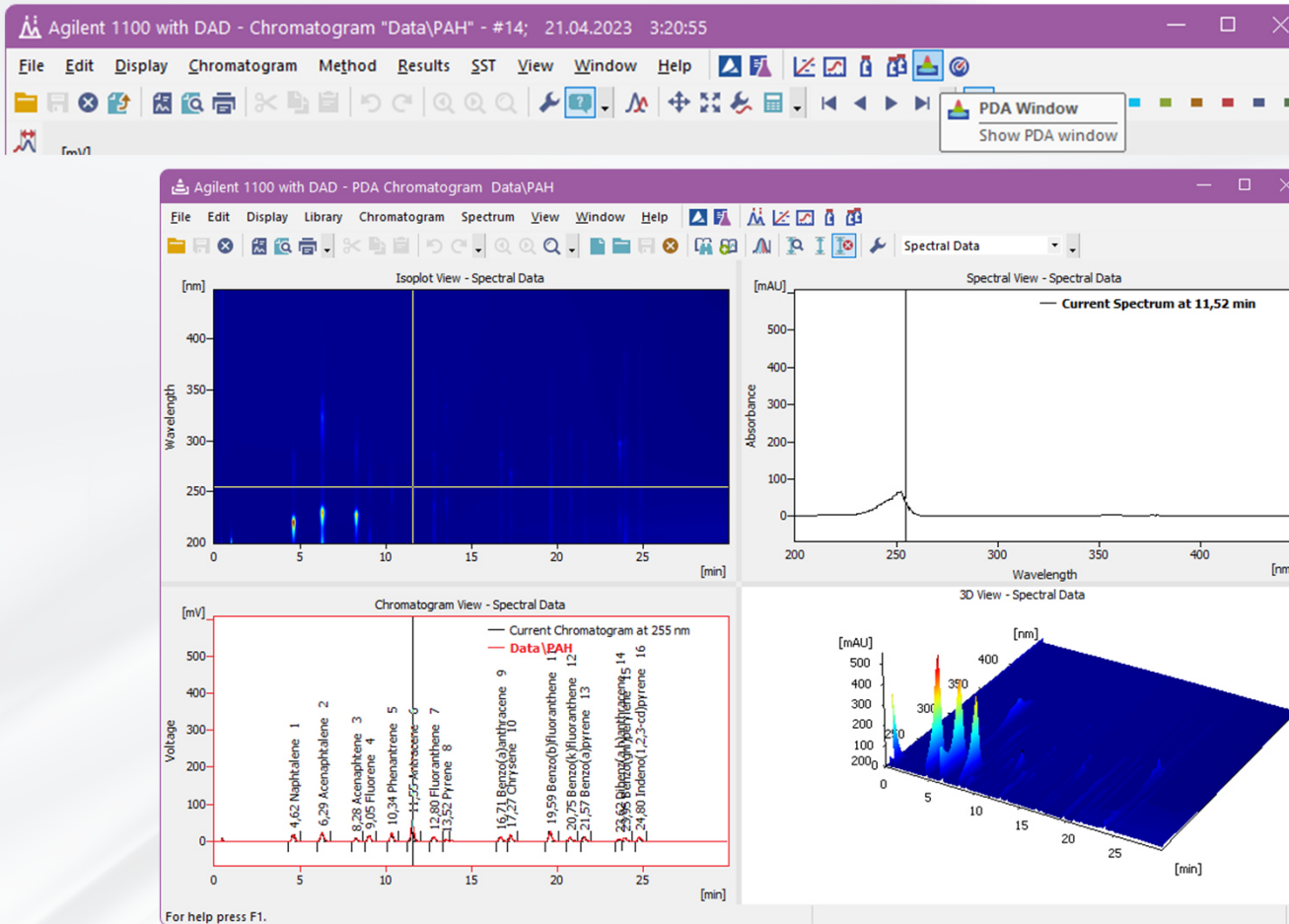
 <https://www.dataapex.com/product/extensions-pda>

SYSTEM CONFIGURATION

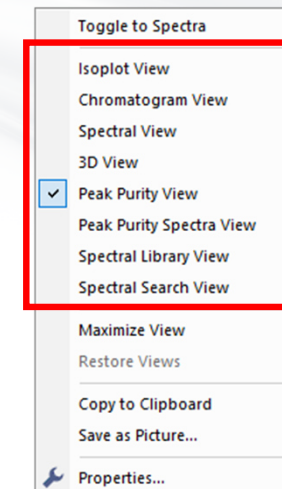


- PDA option is configured in the System Configuration window
- PDA can be enabled on a station where p/n A29 is purchased

PDA WINDOW



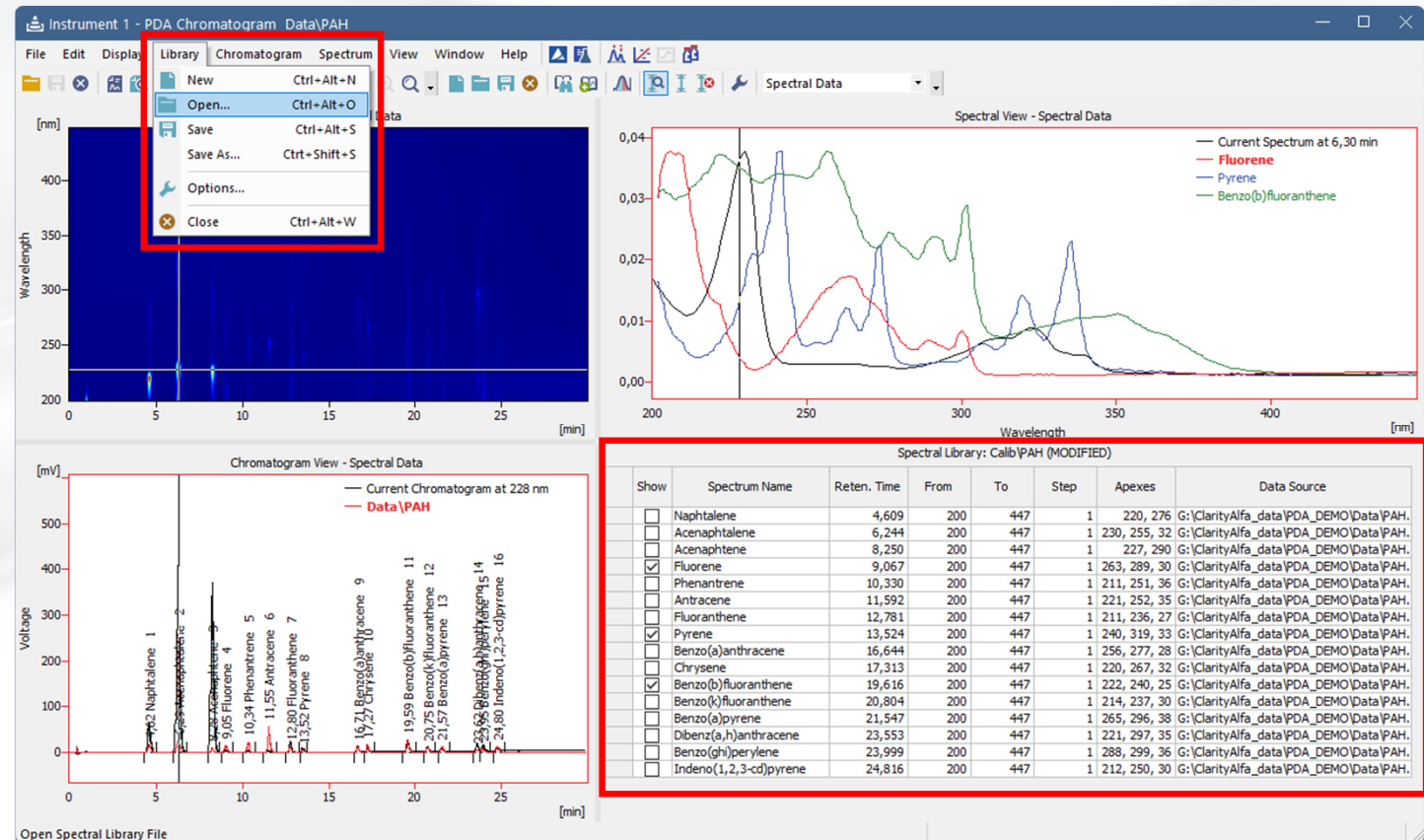
- PDA window is accessible from the Chromatogram window
- 8 different views could be selected in the 4 panes



PDA WINDOW

SPECTRAL LIBRARY

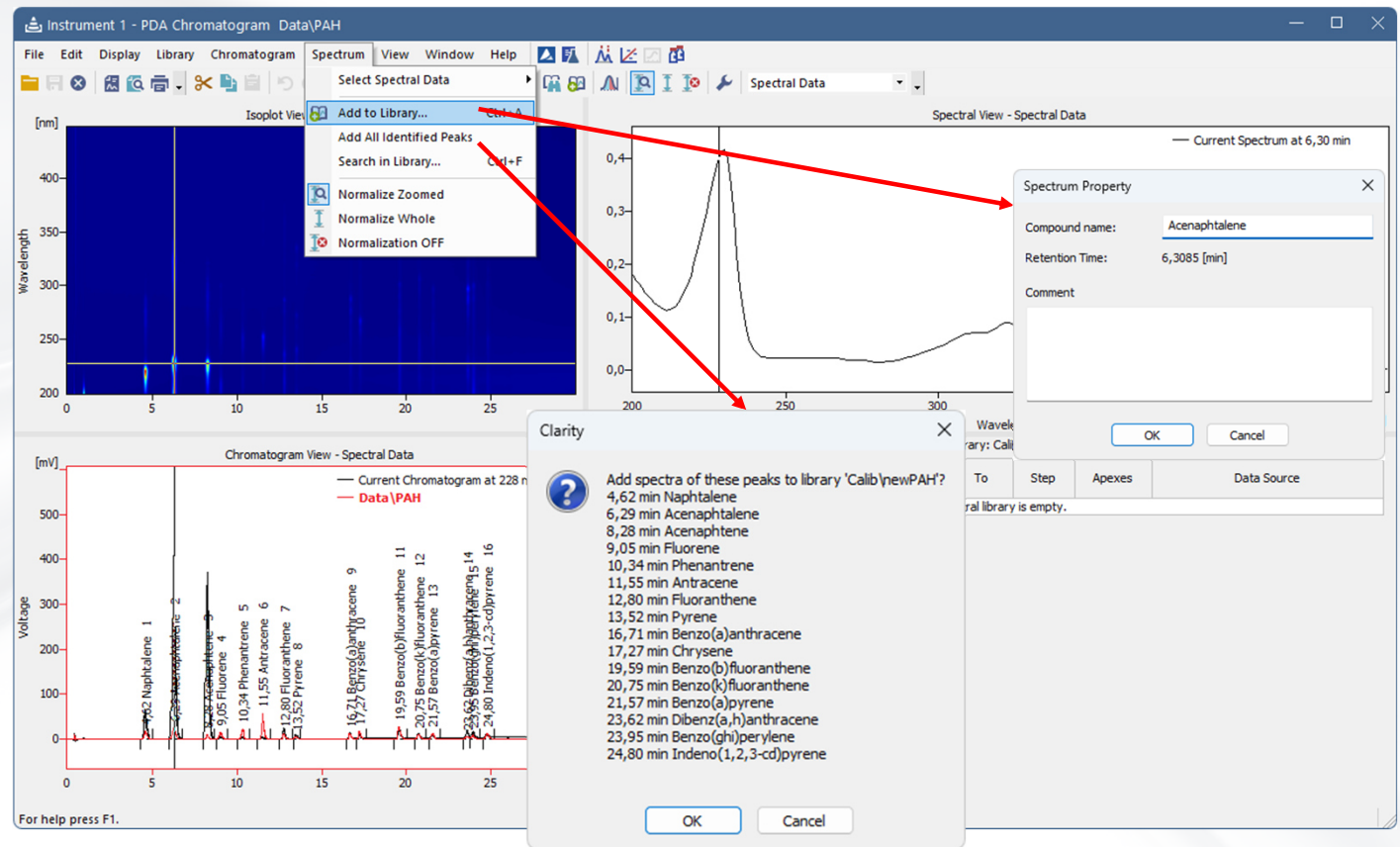
- Library menu allows you to open or create a new Spectral library.
- By default, the Library is stored in the Calib subdirectory of the current Project
- Spectral Library pane display details for the spectra in library and allows to display them in Spectral View



PDA WINDOW

SPECTRAL LIBRARY

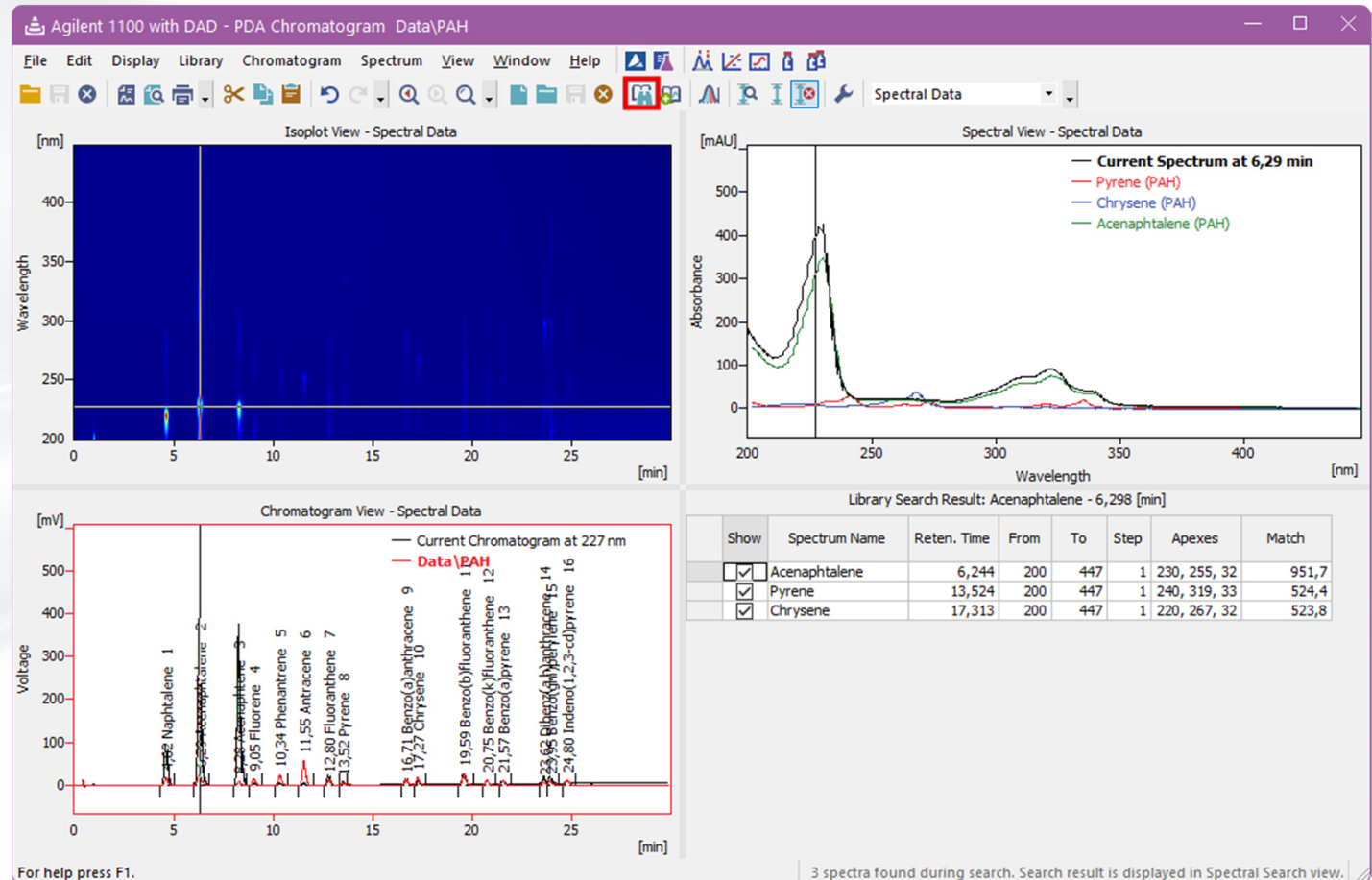
- Spectra to the library could be added individually using the Add to Library... command
- Multiple spectra could be added from a chromatogram with identified peaks using the Add All Identified Peaks command



PDA VIEW

SPECTRUM SEARCH

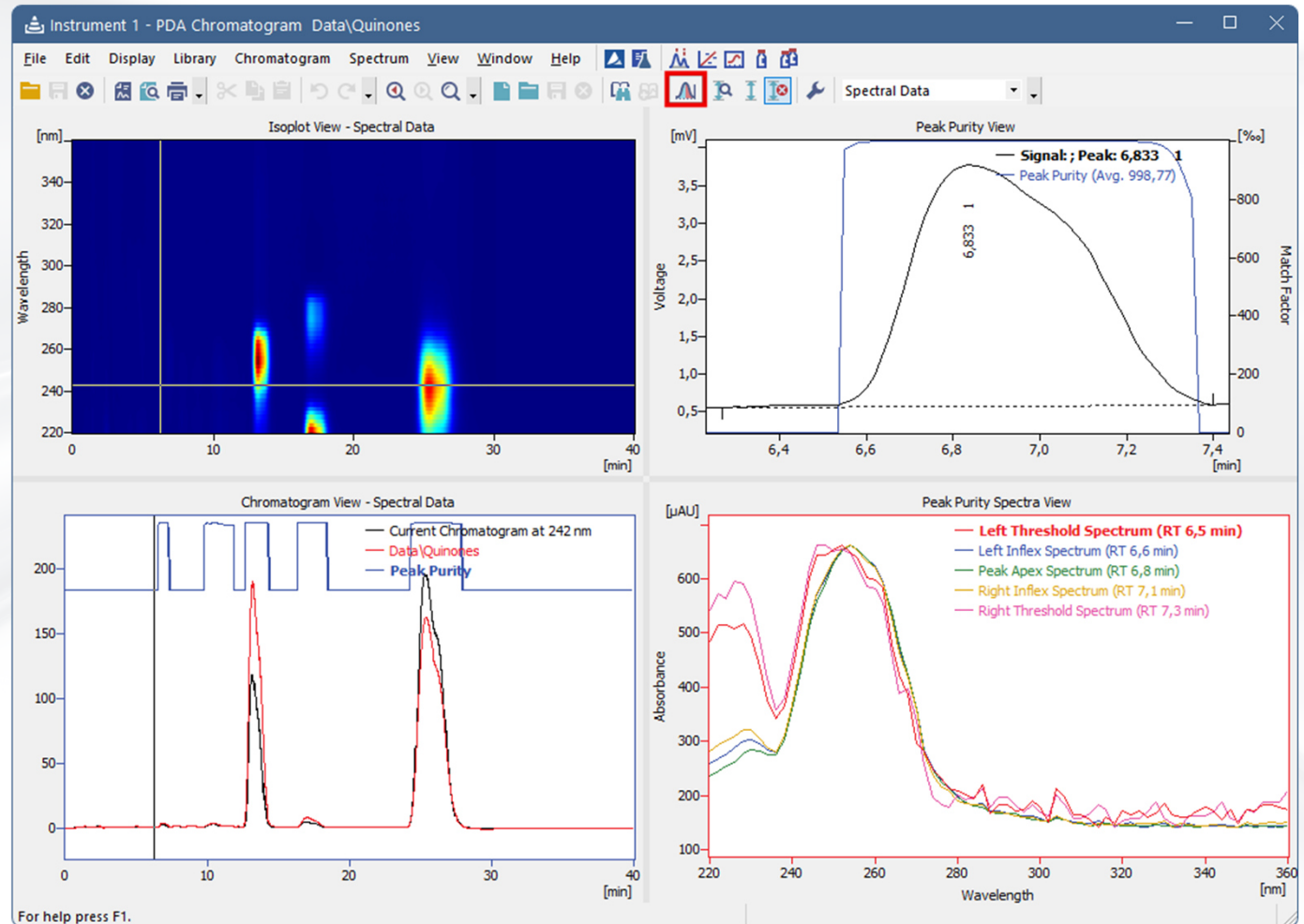
- Library search results are displayed as an overlay in Spectral View or as a table in Library Search Result



PDA VIEW

PEAK PURITY

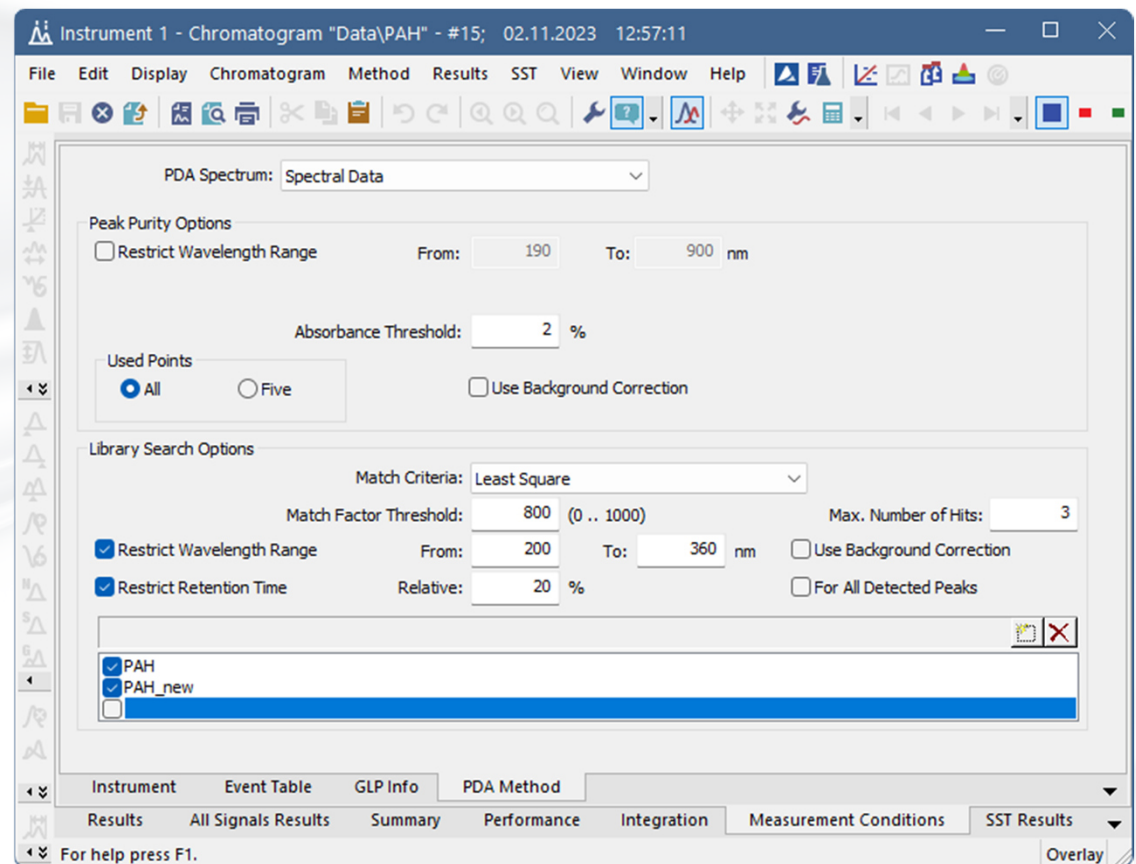
- View peak purity for entire chromatogram or a single peak
- Spectra for peak start, end, inflection and apex are compared in the Peak Purity Spectra View



PDA METHOD

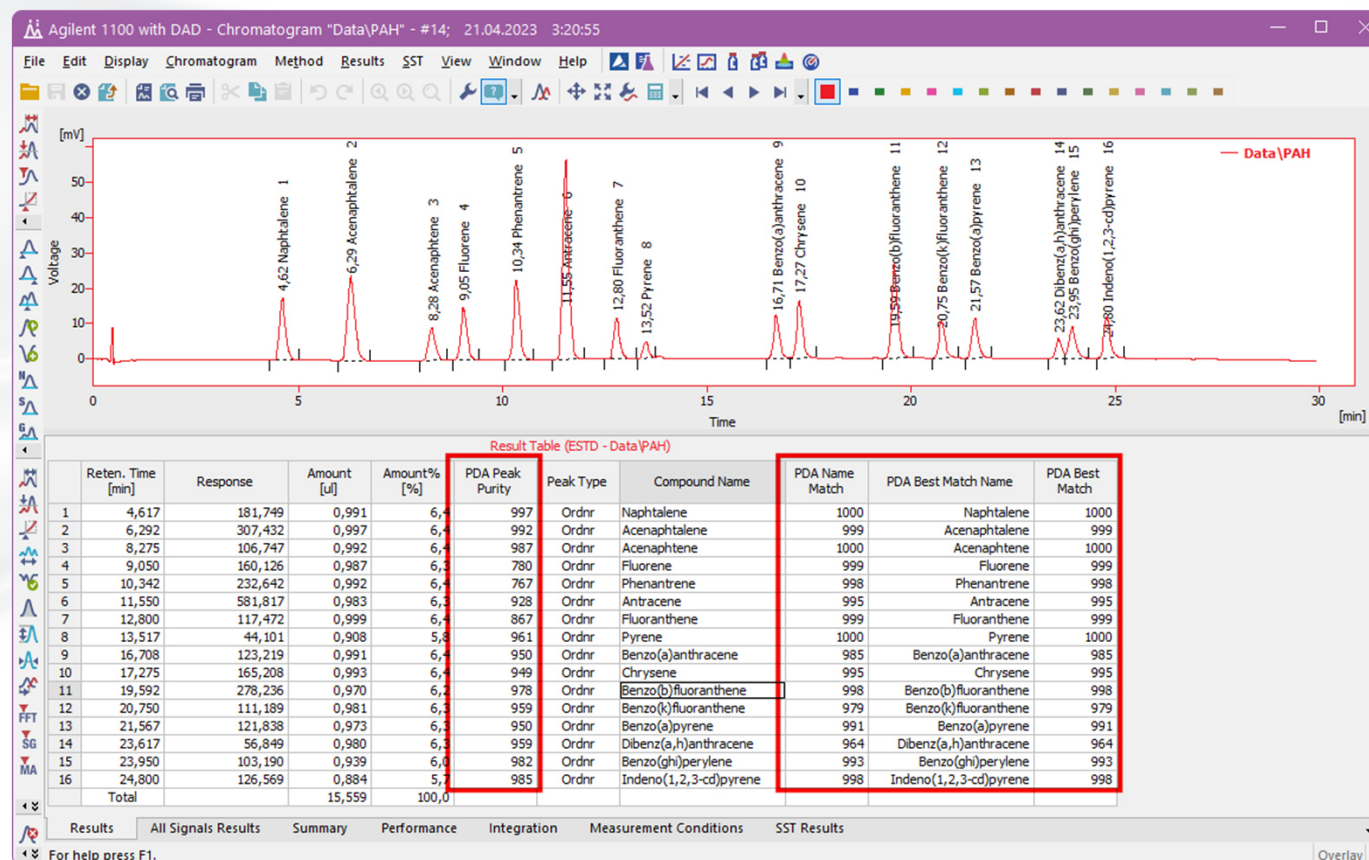
MEASUREMENT CONDITIONS

- Peak Purity and Library Search Options are set on the PDA Method tab
- Multiple PDA libraries could be set in the method



PDA RESULTS

- Library search results are displayed as an overlay in Spectral View or as a table in Library Search Result
- PDA Name Match belongs to the compound identified by the calibration found in the first PDA library
- PDA Best Match Name and PDA Best Match are based on all PDA libraries set in the PDA Method



PDA REPORT

Report Setup Chromatogram

Page Setup

- Lab. Header
- Report Header
- Method
- Calibration
- Chromatogram
- Results
- Sequence
- SST
- PDA
- Audit & Signatures
- Lab. Footer

Print

On New Page

Signals

All

Active Chromatogram

Only Active Signal

Height of Graphs

Fixed Height: 110 [mm]

PDA Data Plots

Isoplot

3D plot

Spectrum

Chromatogram

Peak Purity

Graph

Spectra

All Peaks

Identified Peaks

Library Search Results

Table

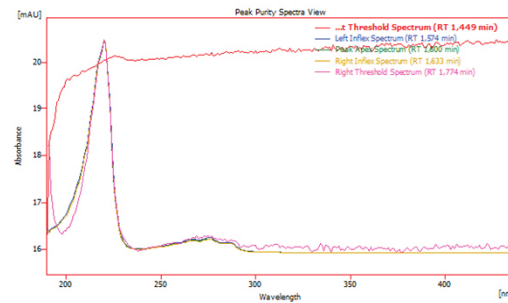
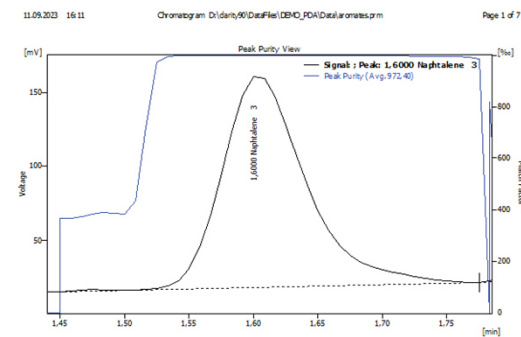
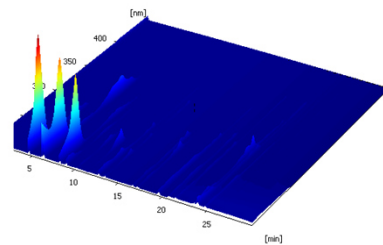
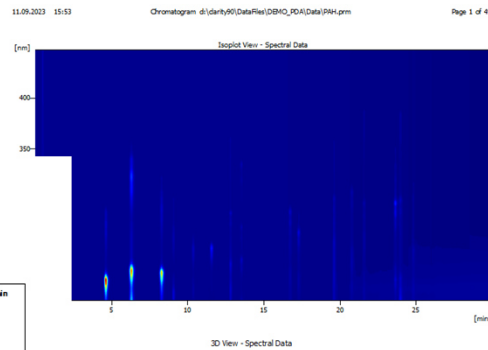
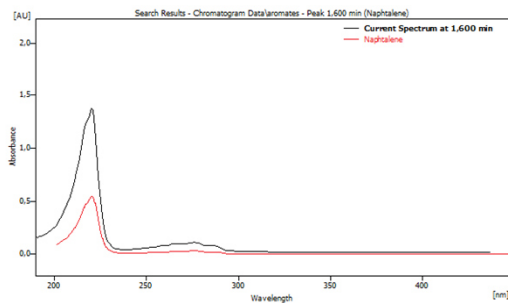
Spectra

OK

Cancel

Help

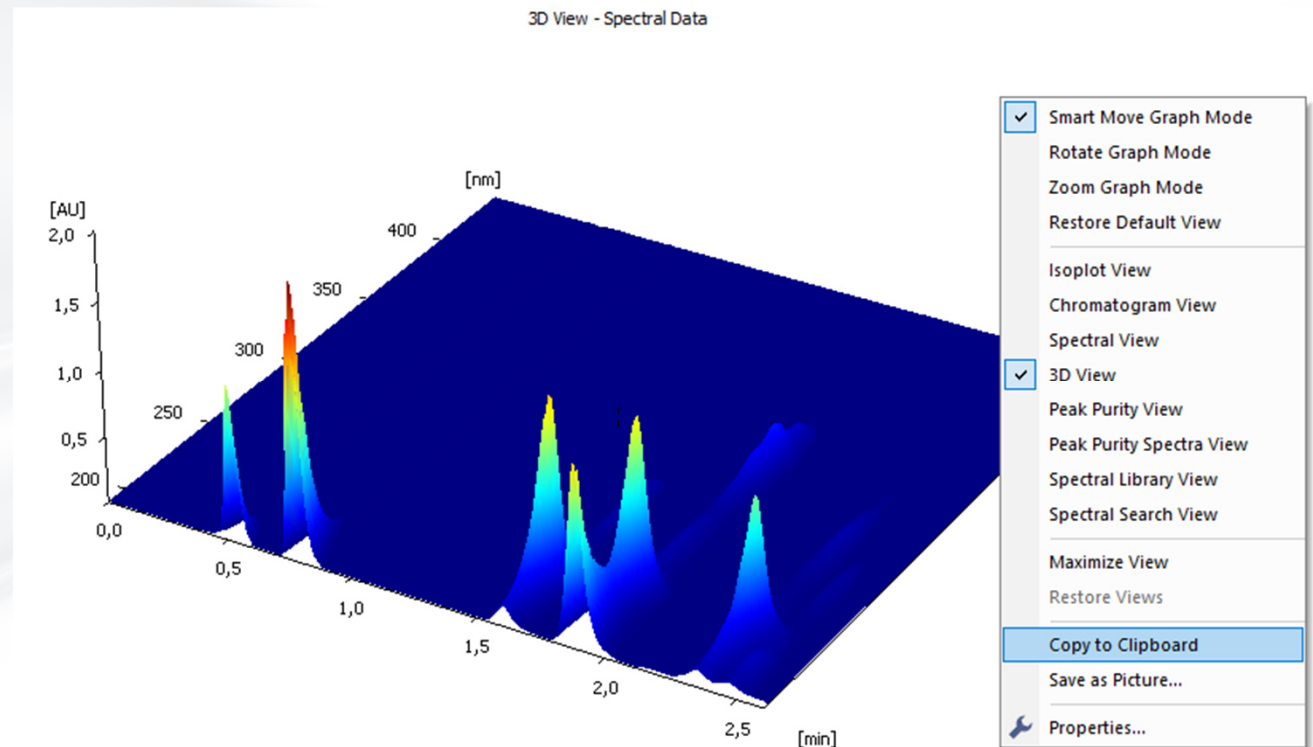
Show	Spectrum Name	Reten. Time	From	To	Gap	Apexes	Match
	Aronaphthalene	6.244	200	440	1	230, 285, 321	969.5
	Aronaphthalene	8.250	200	440	1	227, 290	900.8



- Customize PDA Report to display desired results

EXPORT OF GRAPHS

- Export graphs into clipboard or save them as a picture (*.emf)



23.0331



Clarity™

ADVANCED CHROMATOGRAPHY SOFTWARE

...

THANK YOU FOR YOUR ATTENTION