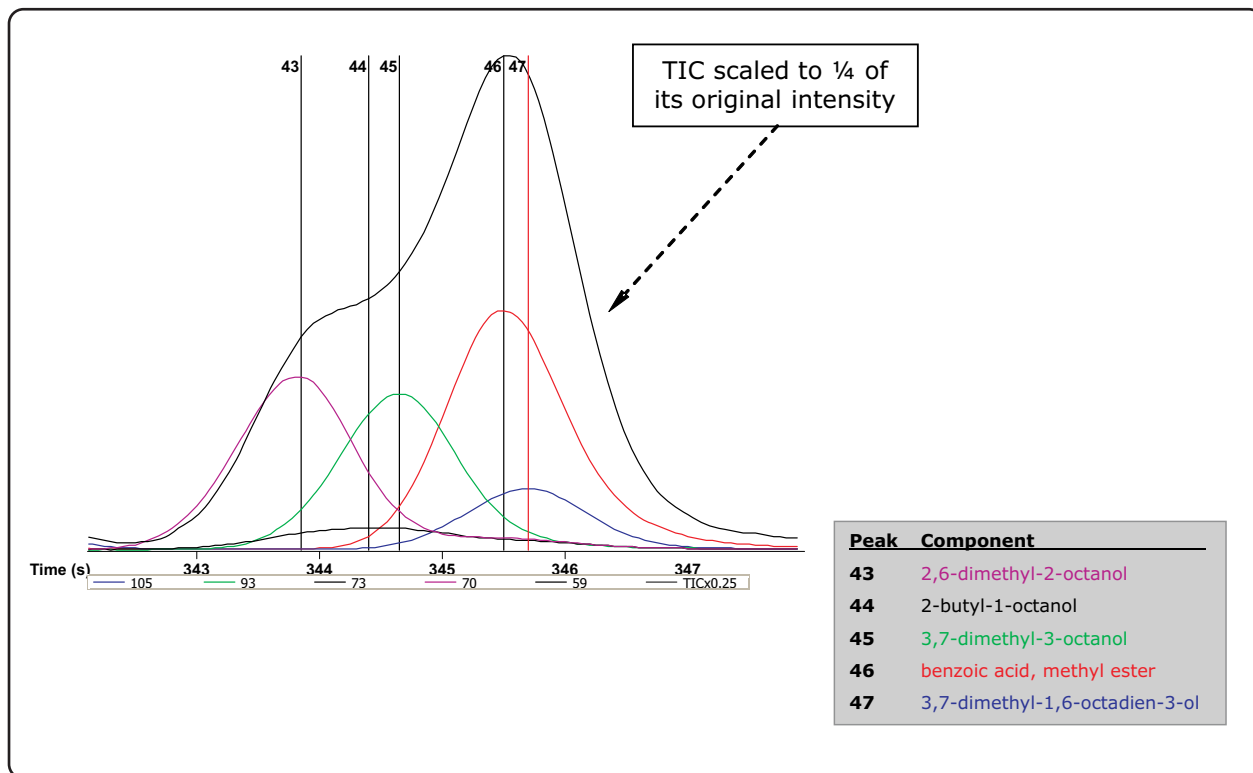


Analysis of Liquid Hand Soap by Thermal Desorption-GC-TOFMS

Life Science and Chemical Analysis Centre
LECO Corporation, Saint Joseph, Michigan USA



A segment of the TD-GC-TOFMS chromatogram where five peaks coelute. True Signal Deconvolution® (TSD) provides the ability to detect all five of the coeluting peaks while providing an accurate identification of each peak.

Column:

10 m x 0.18 mm x 0.2 μ m Rtx-5 MACH LTM

TOFMS:

29 to 300 m/z @ 20 spectra/s

For questions on this analysis e-mail us at:
life_science@leco.com

For a complete listing of snapshots and application notes visit us on the web at www.leco.com

