

## Analysis of Acrylamide in Tap Water Using Triple Quadrupole LC/MS/MS

K. Kawakami

### User Benefits

- ◆ Quantitative analysis of acrylamide, which is listed as an Item for Further Study in Japan's Drinking Water Quality Standards, is possible at a concentration of 1/20 the target value of 0.5 µg/L.
- ◆ LC/MS/MS enables analysis of acrylamide without a sample concentration pretreatment process.
- ◆ It is possible to quantify acrylamide in drinking water with a satisfactory recovery rate.

### Introduction

Polyacrylamide is a highly effective flocculating agent which is used as a chemical for water treatment, but may also contain its monomer acrylamide as a contaminant.

As of August 2021, acrylamide was classified as a Class 1 Designated Chemical Substance under Japan's Law concerning Pollutant Release and Transfer Register (PRTR Law) due to concerns regarding its harmful effect on health, and a target value of 0.0005 mg/L (0.5 µg/L) was set as an Item for Further Study in the Drinking Water Quality Standards (DWQSs).

Although an acrylamide analysis method involving sample preparation by solid-phase extraction has been reported <sup>(1)</sup>, this article introduces the results of an analysis using the LCMS-8060NX liquid chromatograph mass spectrometer (Fig. 1) in which the concentration process was omitted and the tap water was injected directly.

A good recovery rate was obtained in the spike-and-recovery test, and analysis with high accuracy was possible at a concentration of 0.05 µg/L, which is 1/10 of the target value for acrylamide.

### Analysis Conditions

Table 1 shows the HPLC and MS analysis conditions used in the measurement of acrylamide.

Table 1 Analysis Conditions

| [HPLC conditions] (Nexera™ X3) |  |
|--------------------------------|--|
| Column                         | : CAPCELL PAK C18 AQ<br>(150 mm × 2.0 mm I.D., 3 µm, Osaka Soda)                                       |
| Mobile phases                  | : A) 0.01 % Formic Acid in Water<br>B) 0.01 % Formic Acid in Acetonitrile                              |
| Gradient Program               | : B .conc. 2 % (0-4.9 min) -<br>100 % (5-9 min) - 2 % (9.1-15 min)                                     |
| Flow rate                      | : 0.2 mL/min   |
| Column Temp.                   | : 40 °C  |
| Injection volume               | : 10 µL  |
| [MS conditions] (LCMS-8060NX)  |  |
| Ionization                     | : ESI (Positive mode)  |
| Probe Voltage                  | : + 0.5 kV   |
| Nebulizing gas flow            | : 3 L/min  |
| Drying gas flow                | : 10 L/min   |
| Heating gas flow               | : 10 L/min   |
| DL Temp.                       | : 200 °C   |
| Heat Block Temp.               | : 500 °C   |
| Interface Temp.                | : 350 °C   |
| MRM transition                 | : Acrylamide <i>m/z</i> 72.10>55.15<br><sup>13</sup> C <sub>3</sub> -Acrylamide <i>m/z</i> 75.10>58.15 |



Fig. 1 Nexera™ X3 + LCMS™-8060NX

### MRM Chromatogram of Acrylamide

Fig. 2 shows the MRM chromatogram obtained when acrylamide was measured under the HPLC and MS analysis conditions shown in Table 1. The results confirmed that detection is amply possible at a concentration of 0.025 µg/L.

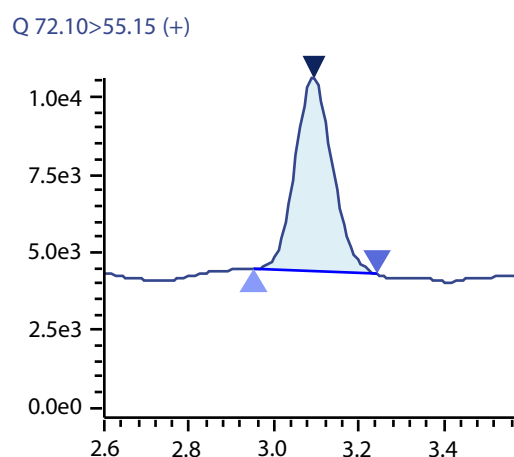


Fig. 2 MRM Chromatogram of Acrylamide (0.025 µg/L)

## ■ Calibration Curve of Acrylamide

Standard samples of acrylamide were prepared by dilution with water to concentrations from 0.025 to 0.5 µg/L. In this process, an internal standard (<sup>13</sup>C<sub>3</sub>-acrylamide) was added as 0.1 µg/L total concentration for each sample.

Using these samples, a calibration curve for acrylamide was prepared by the internal standard method. Fig.3 shows the obtained calibration curve.

The coefficient of determination ( $r^2$ ) was  $r^2 > 0.999$  and the accuracy of all calibration points was 80 to 120 %, confirming that the calibration curve was satisfactory.

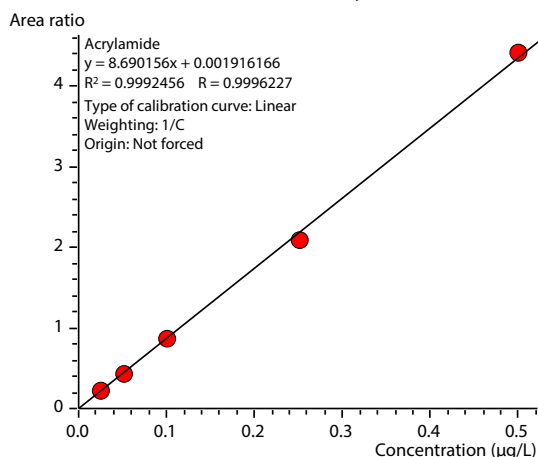


Fig. 3 Calibration Curve of Acrylamide

## ■ Repeatability of Acrylamide Analysis

A repeated analysis (n=5) was conducted with a standard sample of acrylamide with a concentration of 0.05 µg/L, which is 1/10 of the target value, and repeatability was confirmed. Fig.4 shows the MRM chromatograms of each analysis. Repeatability accuracy (concentration RSD) was 1.9 %, showing good repeatability.

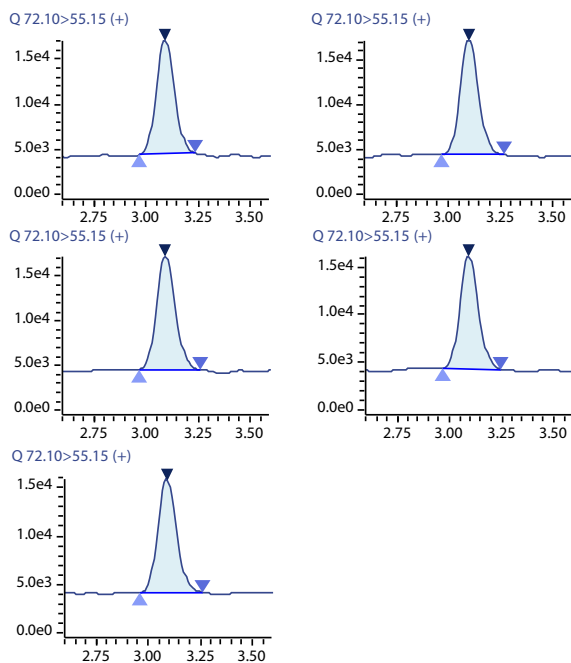


Fig. 4 MRM Chromatograms of Acrylamide (0.05 µg/L)

## ■ Spike-and-Recovery Test of Tap Water

A spike-and-recovery test was carried out using tap water sampled in Kanagawa Prefecture, Japan. Because decomposition of acrylamide by chlorine has been reported<sup>(1)</sup>, the sampled tap water was dechlorinated by adding 0.02 g/L of sodium ascorbate.

A spiked tap water sample was prepared by spiking the dechlorinated tap water with 0.05 µg/L of acrylamide. Fig.5 shows the MRM chromatograms obtained by analysis of the tap water and the spiked tap water sample.

The recovery rate of the tap water was 100.3 %, and the repeatability accuracy (concentration RSD) of the spiked sample was 2.5 % (Table 2).

Satisfactory results were obtained for both the recovery rate and repeatability accuracy, demonstrating that tap water samples can also be analyzed with good accuracy.

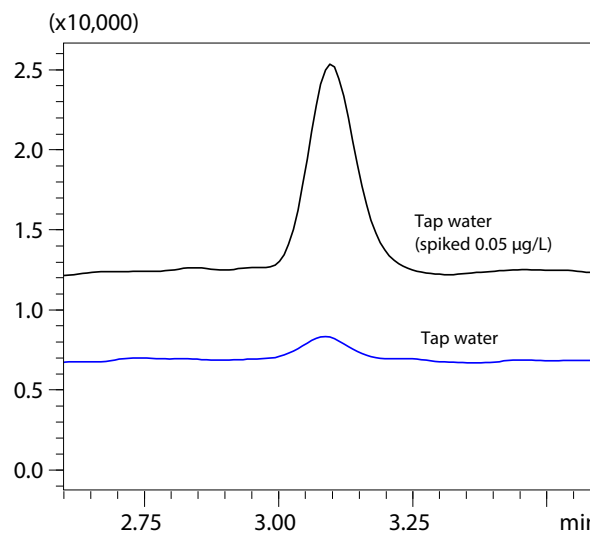


Fig. 5 MRM Chromatograms of Tap Water and Spiked Tap Water

Table 2 Recovery Rate and Repeatability of Spiked Tap Water

| Recovery rate | Repeatability accuracy (concentration RSD) |
|---------------|--|
| 100.3 %       | 2.5 %                                      |

## ■ Conclusion

- An analysis of acrylamide, which is specified as an Item for Further Study in Japan's Drinking Water Quality Standards, was carried out using an LCMS-8060NX, and sufficient sensitivity was obtained at 0.025 µg/L (target value: 0.5 µg/L).
- A good recovery rate and repeatability were obtained in a spike-and-recovery test of a tap water sample, confirming that it is possible to analyze acrylamide in tap water with high accuracy.

<Reference>

- (1) Standard Methods for the Examination of Water 2020 Ed., III. Organic Compounds, 16. Acrylamide (Japan Water Works Association)

LCMS and Nexera are trademarks of Shimadzu Corporation or its affiliated companies in Japan and/or other countries.