

Automatic Optimization of Gradient Conditions by AI Algorithm

-Consecutive Optimization at Different Column Oven Temperatures-

Shinichi Fujisaki

User Benefits

- ◆ The AI algorithm of LabSolutions MD can automatically optimize gradient conditions to greatly reduce labor of LC method development.
- ◆ Gradient conditions are automatically optimized at different column oven temperatures consecutively.
- ◆ Automatic optimization of gradient conditions can be applied not only to new method development, but also to existing method to efficiently improve resolution.

Introduction

In the typical LC method development, the process begins with “preparation” which includes mobile phase preparation, column installation, and creation of analysis schedules, then the analysis is started. After that, the acquired data is analyzed and “preparation” for the subsequent analysis is carried out, followed by starting the next analysis again. The method development progresses by repeating these processes, but in addition to the significant time required to repeatedly create analysis schedules, expertise in chromatography is necessary to explore optimal conditions based on data analysis. In other words, typical method development requires “human intervention”. Therefore, eliminating human involvement and automating such method development processes would be desirable to improve labor efficiency. This article introduces an approach for automatically optimizing gradient conditions at different column oven temperatures consecutively, identifying the combination of temperature and gradient conditions that meet the resolution criteria.

Analytical Conditions and Target Compounds

The analytical conditions and target compounds are shown in Table 1. In this article, a mixture of seven compounds was used as the model sample. Resolution criteria was specified for the sample, and a combination of a temperature and gradient conditions that met the criteria were automatically searched using LabSolutions MD (A dedicated software for supporting method development : [Technical Report C190-E309](#)). Specifically, the automatic optimization of gradient conditions was consecutively applied at three different column oven temperatures (30, 40, and 50 °C).

Table 1 Analytical Conditions and Target Compounds

System : Nexera™ X3	
Sample : ① Hydrocortisone, ② Furosemide, ③ Ketoprofen, ④ Naproxen ⑤ Probenecid, ⑥ Diclofenac, ⑦ Indomethacin	
Mobile phase: Pump A : 0.1% formic acid in water Pump B : Acetonitrile	
Column : Shim-pack Scepter™ C18-120 *1 (100 mm × 3.0 mmI.D., 1.9 μm)	
Analytical conditions	
B Conc.	: 30%(0 min)→60%(X *2 min) →30%(X~X+5 min)
Column Temp.	: 30, 40, 50 °C
Flow rate	: 0.7 mL/min
Injection Vol.	: 5 μL
Detection	: 254 nm (SPD-M40, STD cell)

Criteria of automatic optimization of gradient conditions
Minimal resolution : 1.5

*1 : 227-31013-03 (Shimadzu GLC product number)

*2 : X = 16, 18, 20, 22, 24 (5 patterns)

Automatic Optimization of Gradient Conditions

Fig. 1 shows the workflow of automatic optimization of gradient conditions using LabSolutions MD. This software has a unique AI algorithm to automatically explore gradient conditions that satisfy resolution criteria by alternately repeating “improvement of gradient conditions by AI (condition search)” and “analysis under improved conditions (correction analysis)”. For the criteria, “resolution” and “elution time of the last peak” can be set. Automatic optimization can be performed by simply inputting flow rate and column oven temperature (Fig. 2), providing easy operation for anyone, regardless of experience in chromatography. In this article, automatic optimization of gradient conditions was applied at different column oven temperatures (30, 40, and 50 °C) consecutively to meet the criteria of minimal resolution of 1.5 (Fig. 2).

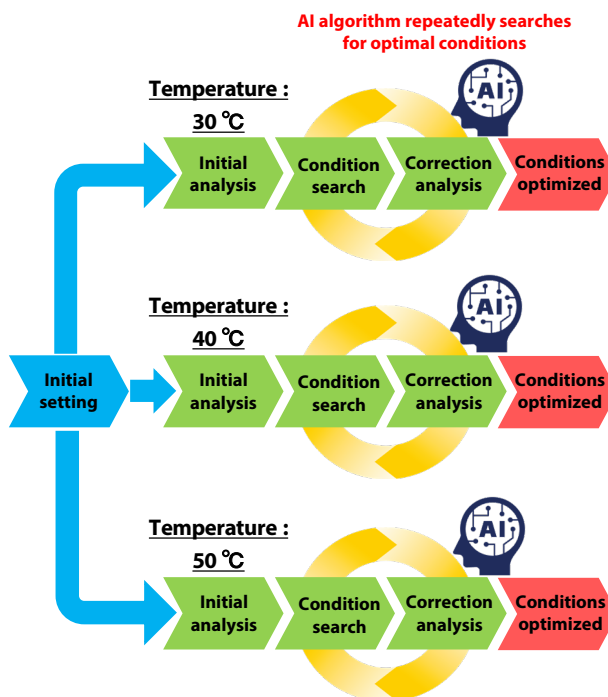


Fig. 1 Workflow for Automatic Optimization of Gradient Conditions by LabSolutions MD

Flow Rate:	<input type="text" value="1.0"/>	mL/min
Oven Temp.:	<input type="text" value="40"/>	°C
Minimum Resolution:	<input type="text" value="1.5"/>	

Fig. 2 Setting for Automatic Optimization

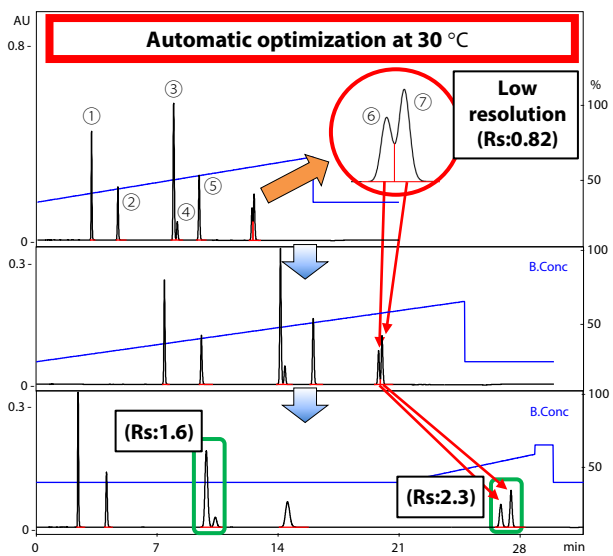


Fig. 3 Result of Automatic Optimization at 30 °C
* blue line shows gradient conditions

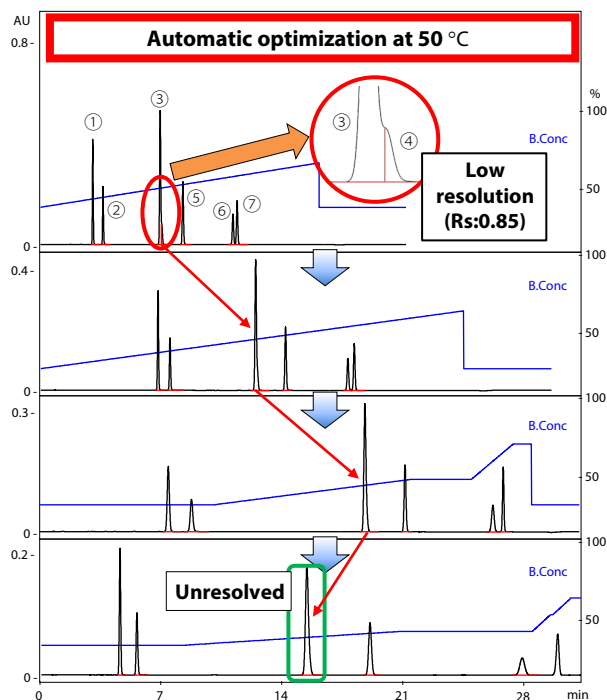


Fig. 5 Result of Automatic Optimization at 50 °C
* blue line shows gradient conditions

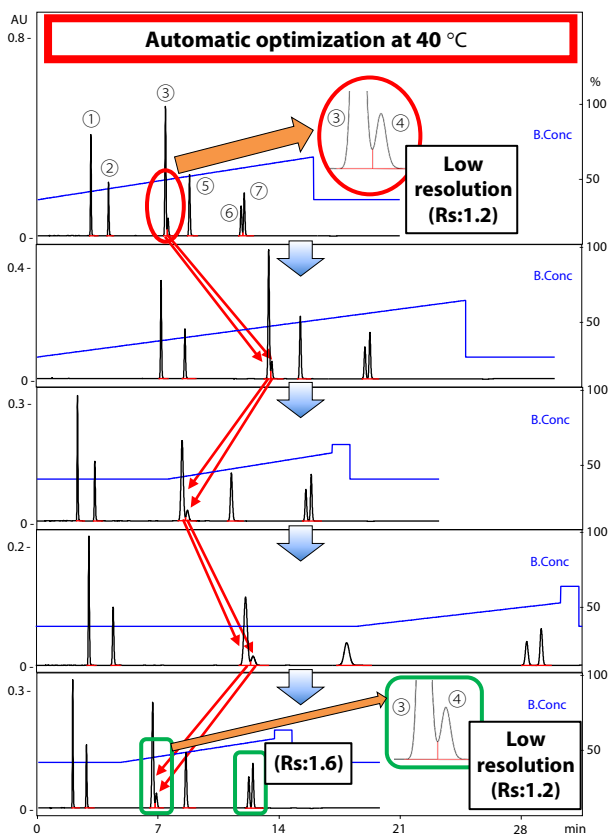


Fig. 4 Result of Automatic Optimization at 40 °C
* blue line shows gradient conditions

The results of automatic optimizations of gradient conditions at different column oven temperatures are shown in Fig. 3~5, respectively. Considering the minimal resolution of 1.5, peaks ⑥ and ⑦ were not well separated in the initial analysis when the column oven temperature was 30 °C (red circle in Fig. 3). Similarly, peaks ③ and ④ were not well separated at column oven temperatures of 40 °C and 50 °C (red circles in Fig. 4 and Fig. 5). Following the initial analysis, the gradient conditions that met the resolution criteria were automatically explored using “improvement of gradient conditions by AI” and “analysis under improved conditions”. At 30 °C, the optimized gradient conditions successfully met the resolution criteria (green box in Fig. 3). However, at 40 °C and 50 °C, even with automatic optimization, peaks ③ and ④ failed to meet the resolution criteria. These results indicate that the optimal column oven temperature is 30 °C, as it achieves the minimal resolution of 1.5 for all peaks. As demonstrated, the automatic optimization of gradient conditions can be applied consecutively to multiple column oven temperatures, enabling users to identify suitable conditions that meet the criteria, regardless of their experience in chromatography.

■ Conclusion

Automatic optimization of gradient conditions using AI algorithm of LabSolutions MD was applied to a model sample (mixture of seven compounds of small molecule) at different column oven temperatures. As a result, the temperature and gradient conditions that met the resolution criteria were successfully explored. In method development, human intervention, such as analysis batch creation and data analysis, is required to optimize gradient conditions. LabSolutions MD can provide significant labor savings in this area. For more information on LabSolutions MD, please refer to the Technical Report [“Efficient Method Development Based on Analytical Quality by Design with LabSolutions MD Software \(C190-E284\)”](#).

Nexera, LabSolutions and Shim-pack Scepter are trademarks of Shimadzu Corporation or its affiliated companies in Japan and/or other countries.