

CoreFocus
Report

No. 97

GCMS

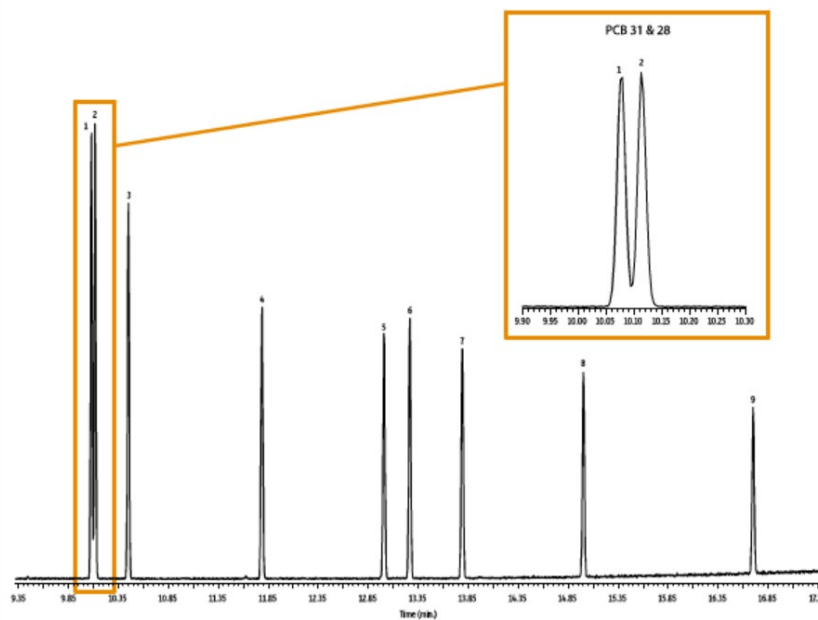
MS

SH Series

SH-I-XLB

Analysis of EU PCB Congeners

Keywords: environment, dioxin



1. PCB 31
 2. PCB 28
 3. PCB 52
 4. PCB 101
 5. PCB 118
 6. PCB 153
 7. PCB 138
 8. PCB 180
 9. PCB 194
- (3.5 µg/mL in dichloromethane)

Column	: SH-I-XLB (30 m x 0.25 mm I.D., df = 0.25 µm), P/N: 227-36043-01
Column Temp.	: 40 °C (2 min) - 30 °C/min - 240 °C (2 min) - 10 °C/min - 340 °C (5 min)
Carrier Gas	: He, 1 mL/min constant flow mode
Inj. Temp.	: 300 °C
Purge Flow	: 50 mL/min
Inj. Volume	: 0.5 µL splitless (hold 1.75 min)

Detector	MS-QP
Transfer Line temp.	: 300 °C
Source Temp.	: 280 °C
Solvent Delay Time	: 4 min
Ionization	: EI
Scan Range	: 45-550

CoreFocus is a trademark of Shimadzu Corporation or its affiliated companies in Japan and/or other countries.

Shimadzu Corporation
www.shimadzu.com/an/

For Research Use Only. Not for use in diagnostic procedures.

This publication may contain references to products that are not available in your country. Please contact us to check the availability of these products in your country.

The content of this publication shall not be reproduced, altered or sold for any commercial purpose without the written approval of Shimadzu.

Company names, products/service names and logos used in this publication are trademarks and trade names of Shimadzu Corporation, its subsidiaries or its affiliates, whether or not they are used with trademark symbol "TM" or "®".

Third-party trademarks and trade names may be used in this publication to refer to either the entities or their products/services, whether or not they are used with trademark symbol "TM" or "®". Shimadzu disclaims any proprietary interest in trademarks and trade names other than its own.

The information contained herein is provided to you "as is" without warranty of any kind including without limitation warranties as to its accuracy or completeness. Shimadzu does not assume any responsibility or liability for any damage, whether direct or indirect, relating to the use of this publication. This publication is based upon the information available to Shimadzu on or before the date of publication, and subject to change without notice.