

# CoreFocus Report

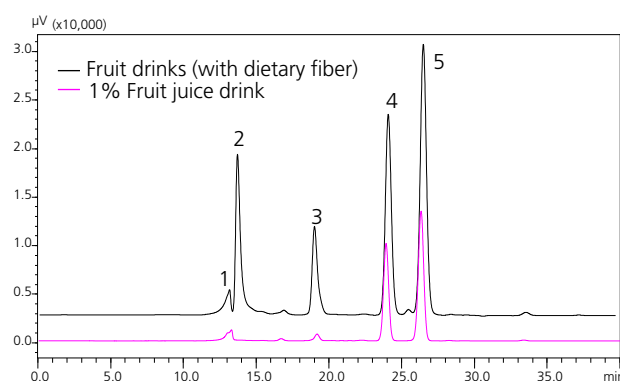
## No.547

LC Size exclusion and Sodium-based ligand exchange mode Shim-pack Series

### Shim-pack™ SUR-Na

## Chromatographic elution pattern of fruit juice soft drinks

**Keywords:** Retention index, Sugars, Food, Fructose glucose syrup, Water-soluble dietary fiber



1. Organic acids (such as citric acid)
2. Waters-soluble dietary fiber, etc.
3. Sucrose & Maltose
4. Glucose
5. Fructose

Each sample was centrifuged (100 g, 3 minutes), and the supernatant was diluted 10 times with water and measured.

Instrument	: Nexera™ lite
Column	: Shim-pack SUR-Na (250 mm x 7.8 mm I.D., 8 μm) 2 pc, P/N : 228-59529-01
Guard column	: Shim-pack SUR-Na (G) (50 mm x 7.8 mm I.D., 8 μm), P/N : 228-59529-02
Mobile phase	: Water
Flow rate	: 0.5 mL/min
Column temp.	: 60°C
Injection volume	: 10 μL
Detector	: RID

CoreFocus, Shim-pack and Nexera are trademarks of Shimadzu Corporation or its affiliated companies in Japan and/or other countries.

**Shimadzu Corporation**

[www.shimadzu.com/an/](http://www.shimadzu.com/an/)

#### For Research Use Only. Not for use in diagnostic procedures.

This publication may contain references to products that are not available in your country. Please contact us to check the availability of these products in your country.

The content of this publication shall not be reproduced, altered or sold for any commercial purpose without the written approval of Shimadzu.

Company names, products/service names and logos used in this publication are trademarks and trade names of Shimadzu Corporation, its subsidiaries or its affiliates, whether or not they are used with trademark symbol "TM" or "®".

Third-party trademarks and trade names may be used in this publication to refer to either the entities or their products/services, whether or not they are used with trademark symbol "TM" or "®".

Shimadzu disclaims any proprietary interest in trademarks and trade names other than its own.

The information contained herein is provided to you "as is" without warranty of any kind including without limitation warranties as to its accuracy or completeness. Shimadzu does not assume any responsibility or liability for any damage, whether direct or indirect, relating to the use of this publication. This publication is based upon the information available to Shimadzu on or before the date of publication, and subject to change without notice.