

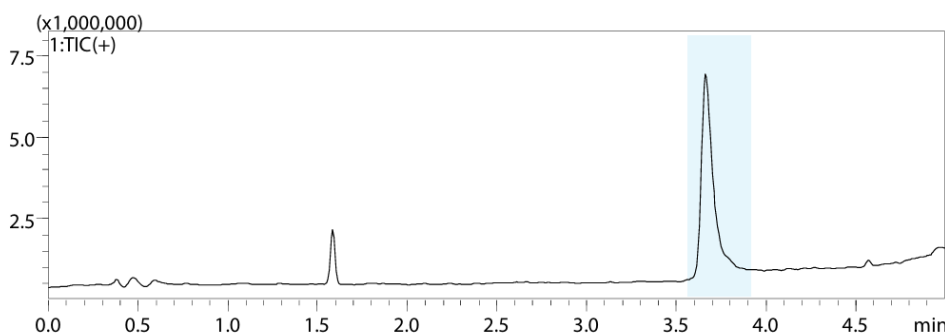
CoreFocus Report

No.578

LC-MS Reversed-phase Shim-pack™ Series

Shim-pack Scepter™ C18-120 Analysis of Peptide and Impurities

Keywords: Peptide hormone, Medium molecule drugs, Quality control



Somatostatin

[HPLC conditions] (Nexera™ X3)

Column : Shim-pack Scepter C18-120,
50 mm x 2.1 mm I.D., 1.9 μ m⁺
Column temp. : 40 °C
Mobile phases : A) 0.1 % TFA in H₂O
B) 0.1 % TFA in acetonitrile
Gradient : B. Conc 10 %(0.00 - 1.50 min) → 80 %(5.00 min)
→
10 %(5.01-8.00 min)
Flowrate : 0.4 mL/min

[MS conditions] (LCMS-2050)

Ionization : ESI/APCI (DUIS™), Positive mode
Mode : Scan (m/z 250 -2000)
Nebulizing gas flow : 2.0 L/min
Drying gas flow : 5.0 L/min
Heating gas flow : 7.0 L/min
DL temperature : 450 °C
Desolvation temperature : 200 °C
Interface voltage : +3.0 kV
Qarray voltage : +20 V

1*: P/N : 227-31012-03

Source : Application News 01-00625 ([JP](#), [ENG](#))

CoreFocus, Shim-pack, Shim-pack Scepter, Nexera and DUIS are trademarks of Shimadzu Corporation or its affiliated companies in Japan and/or other countries.

Shimadzu Corporation

www.shimadzu.com/an/

For Research Use Only. Not for use in diagnostic procedures.

This publication may contain references to products that are not available in your country. Please contact us to check the availability of these products in your country.

The content of this publication shall not be reproduced, altered or sold for any commercial purpose without the written approval of Shimadzu.

Company names, products/service names and logos used in this publication are trademarks and trade names of Shimadzu Corporation, its subsidiaries or its affiliates, whether or not they are used with trademark symbol "TM" or "®".

Third-party trademarks and trade names may be used in this publication to refer to either the entities or their products/services, whether or not they are used with trademark symbol "TM" or "®".

Shimadzu disclaims any proprietary interest in trademarks and trade names other than its own.

The information contained herein is provided to you "as is" without warranty of any kind including without limitation warranties as to its accuracy or completeness. Shimadzu does not assume any responsibility or liability for any damage, whether direct or indirect, relating to the use of this publication. This publication is based upon the information available to Shimadzu on or before the date of publication, and subject to change without notice.