

CoreFocus Report

No.587

LC-MS

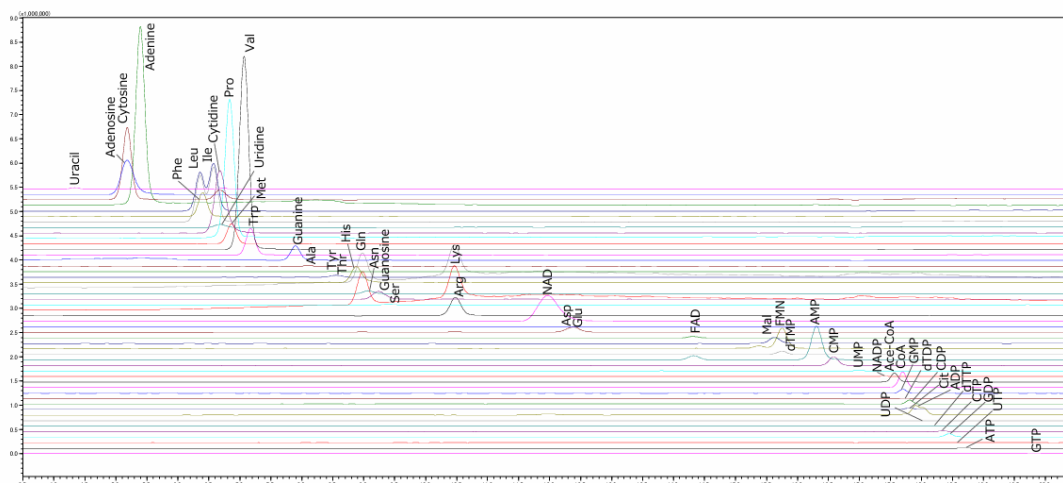
HILIC

Shim-pack™ Series

Shim-pack Mix HILIC

Analysis of Hydrophilic Metabolites

Keywords: metabolomics



1. Uracil	11. Met	21. Guanosine	31. AMP	41. ADP
2. Adenosine	12. Val	22. Ser	32. CMP	42. UDP
3. Cytosine	13. Trp	23. Arg	33. UMP	43. dTTP
4. Adenine	14. Guanine	24. NAD	34. NADP	44. CTP
5. Leu	15. Ala	25. Asp	35. Ace-CoA	45. GDP
6. Phe	16. Tyr	26. Glu	36. CoA	46. UTP
7. Ile	17. Thr	27. FAD	37. GMP	47. ATP
8. Uridine	18. His	28. Mal	38. dTDP	48. GTP
9. Cytidine	19. Gln	29. FMN	39. CDP	
10. Pro	20. Asn	30. dTMP	40. Cit	

[HPLC conditions] (Nexera™ X3)

Column	: Shim-pack Mix HILIC, 150 mm x 2.1 mm I.D., 5 μm ⁺
Column oven	: 40 °C
Mobile phase A	: Water + 40 mmol/L ammonium bicarbonate (pH 9.7)
Mobile phase B	: Acetonitrile
Rinse	: Methanol
Gradient	: B conc 95 % (0-0.5 min) → 40 % (15.5 min) → 0 % (16.5-16.5 min) → 95 % (27.5- 35 min)
Flow rate	: 0.4 mL/min
Injection vol.	: 5 μL

1*: P/N : 227-32751-01

[MS conditions] (LCMS-8060NX)

Ionization	: ESI (IonFocus™)
Mode	: MRM
Nebulizing gas flow	: 2.0 L/min
Heating gas flow	: 10.0 L/min
Drying gas flow	: 10.0 L/min
DL Temp.	: 250 °C
Heat Block Temp.	: 400 °C
Interface Temp.	: 300 °C
CID gas pressure	: 270 kPa

Source : Application News 01-00679 ([JP,ENG](#))

CoreFocus, Shim-pack, Nexera and IonFocus are trademarks of Shimadzu Corporation or its affiliated companies in Japan and/or other countries.

Shimadzu Corporation

www.shimadzu.com/an/

For Research Use Only. Not for use in diagnostic procedures.

This publication may contain references to products that are not available in your country. Please contact us to check the availability of these products in your country.

The content of this publication shall not be reproduced, altered or sold for any commercial purpose without the written approval of Shimadzu.

Company names, products/service names and logos used in this publication are trademarks and trade names of Shimadzu Corporation, its subsidiaries or its affiliates, whether or not they are used with trademark symbol "TM" or "®".

Third-party trademarks and trade names may be used in this publication to refer to either the entities or their products/services, whether or not they are used with trademark symbol "TM" or "®".

Shimadzu disclaims any proprietary interest in trademarks and trade names other than its own.

The information contained herein is provided to you "as is" without warranty of any kind including without limitation warranties as to its accuracy or completeness. Shimadzu does not assume any responsibility or liability for any damage, whether direct or indirect, relating to the use of this publication. This publication is based upon the information available to Shimadzu on or before the date of publication, and subject to change without notice.