

Agilent OpenLAB CDS MatchCompare A.01.03.1 for Chromatographic Peak Matching and Comparison

Agilent OpenLAB CDS MatchCompare is an add-on software tool that automates the time-consuming task of comparing quality control chromatograms of complex samples (for example, flavors, fragrances, paints, and so forth). The software provides the ability to objectively compare unknown samples to a known standard. The software quickly identifies similar chromatographic peaks between two chromatograms, and compares areas against predetermined ranges. OpenLAB CDS MatchCompare provides the ability to streamline quality control processes for higher throughput in a variety of GC and LC applications.

- Identify and match peaks (based on area and retention time) between two complex samples
- Save time and monitor product content uniformity by peak area comparison
- Integrates seamlessly with all OpenLAB CDS platforms
- Comparisons based on retention index available when used with OpenLAB CDS version 2
- Localized in five languages (English, Japanese, Chinese, Brazilian Portuguese, and Russian)

Increase productivity

A powerful and intelligent algorithm allows OpenLAB CDS Match Compare to handle peak distortions, scaling, column gaining, and changes in experimental conditions. Using just a single reference chromatogram, samples are easily and quickly compared for quality assurance. It can reduce the need for frequent reference sample re-injections.

Automatic peak matching

Matching peaks between a reference and a sample chromatogram even when retention times have shifted over several minutes is easy with OpenLAB CDS Match Compare. When used with OpenLAB CDS version 2, OpenLAB MatchCompare permits comparisons based on retention indices in addition to comparisons based on retention times.

Peaks matched between a reference and a sample are graphically linked for easy identification. Also, missing peaks or impurities are represented by different colors both on-screen and in the report.

Automatic peak matching with OpenLAB CDS Match Compare eliminates errors and speeds data review.

Quickly monitor product quality

User-defined area percent tolerance limits for each peak of the reference chromatogram:

- Area percent comparisons are reported for each matched peak.
- Area percent comparisons are checked against user-defined limits and a color-coded report for easy identification of pass/failed peaks.

Compatibility with Agilent OpenLAB CDS

OpenLAB CDS Match Compare can be used in two ways: as stand-alone or integrated within OpenLAB CDS. In the stand-alone version, the files need to be converted to AIA format from the data system. However, OpenLAB CDS Match Compare used within OpenLAB CDS does not require conversion of the data files.

Compatibility with Agilent data systems

OpenLAB CDS Match Compare ships with both A.01.03.1 and A.01.02 to maximize compatibility with the full line of Agilent OpenLAB CDS platforms (as well as some historical platforms). The installer guides the user to which version is best to use.

Part number

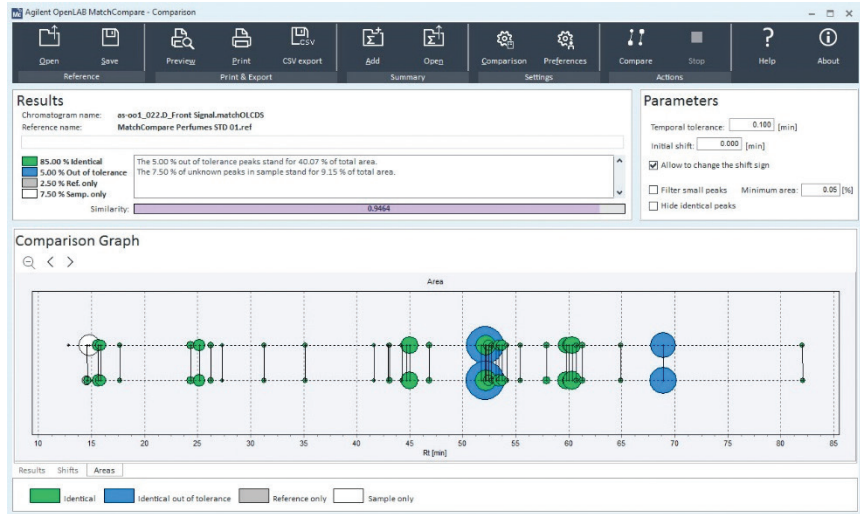
M8350AA Agilent OpenLAB CDS Match Compare for OpenLAB CDS

OpenLAB CDS MatchCompare provides both A.01.03.1 plus A.01.02 on the same disk, ensuring compatibility with the widest range of OpenLAB CDS editions and versions!

Platform	OpenLAB CDS 2.0 and greater	OpenLAB CDS ChemStation Edition	OpenLAB CDS EZChrom Edition	ChemStation rev. B	EZChrom Elite	MS Software, GC/MSD ChemStation, MassHunter
OpenLAB CDS Match Compare A.01.02	Not Supported	C.01.03 to C.01.05 Supported	A.04.04 & A.04.05 Supported	B.04.03 Supported	Not Supported	Not Supported
OpenLAB CDS MatchCompare A.01.03.1	2.0-2.3 Supported	C.01.06 to C.01.08 Supported	A.04.06 to A.04.08 Supported	Not Supported	Not Supported	Not Supported

Please note that while compatible with Windows 7, the use of Windows 10 is strongly recommended for OpenLAB CDS MatchCompare A.01.03.1 to ensure PDF printing availability using the Windows 10 PDF printer.

The OpenLAB CDS MatchCompare Area Plot allows the analyst to quickly see identical and out-of-tolerance peaks, as well as identifying peaks present only in either the reference or sample.



The OpenLAB CDS MatchCompare Results Table provides the analyst with full details on the comparison. A check box eliminates the identical peaks from the results, and allows one to focus on differences between the samples.

Results
 Chromatogram name: as1b_008.D_Front Signal.matchOLCDS
 Reference name: MatchCompare Perfumes STD 01.ref
 Similarity: 0.9474

Parameters
 Temporal tolerance: 0.100 [min]
 Initial shift: 0.000 [min]
 Allow to change the shift sign
 Filter small peaks Minimum area: 0.05 [%]
 Hide identical peaks

Result Table

Name	Rt Samp	Rt Ref [min]	DT	% Samp	% Ref	% Error	Tol [%]	Info	Remarks
Unknown	2.2135	2.2138	-0.0001	93.9939	94.0921	-0.10	6.00	id., Tail peak	
Unknown	2.2628	2.2631	-0.0003	0.4132	0.3283	25.84	15.00	id. OT	
Unknown	2.3419	2.3420	-0.0001	0.0478	0.0481	-0.49	30.00	id.	
Unknown	-----	2.5448	-----	-----	0.0042	0.00	30.00	Ref.	
Unknown	2.6255	-----	-----	0.0308	-----	-----	-----	Samp.	
Unknown	2.5445	2.6256	-0.0811	0.0056	0.0236	-76.50	30.00	id. OT	
Unknown	2.8238	-----	-----	0.0098	-----	-----	-----	Samp.	
Unknown	-----	2.8238	-----	-----	0.0075	0.00	30.00	Ref.	
Unknown	3.4572	-----	-----	0.0050	-----	-----	-----	Samp.	
Unknown	-----	14.5257	-----	-----	0.0753	0.00	30.00	Ref.	
Unknown	14.5258	-----	-----	0.0750	-----	-----	-----	Samp.	
Unknown	14.6123	-----	-----	0.0703	-----	-----	-----	Samp.	
Unknown	-----	14.6123	-----	-----	0.0726	0.00	30.00	Ref.	
Unknown	15.6063	15.6063	0.0000	0.1492	0.1492	-0.03	15.00	id., Tail peak	
Unknown	15.9137	15.9138	-0.0001	0.1135	0.1148	-1.09	15.00	id.	
Unknown	17.6694	17.6704	-0.0010	0.0354	0.0348	1.56	30.00	id.	
Unknown	24.3699	24.3716	-0.0017	0.0641	0.0643	-0.28	30.00	id.	
Unknown	25.1839	25.1861	-0.0022	0.1405	0.1403	0.12	15.00	id., Tail peak	
Unknown	26.2557	26.2581	-0.0024	0.0407	0.0406	0.11	30.00	id.	
Unknown	27.3523	27.3548	-0.0025	0.0159	0.0159	0.09	30.00	id.	
Unknown	31.2461	31.2486	-0.0025	0.0251	0.0249	0.62	30.00	id.	
Unknown	35.1585	35.1611	-0.0026	0.0247	0.0246	0.49	30.00	id.	
Unknown	41.6398	41.6434	-0.0036	0.0138	0.0140	-1.15	30.00	id.	
Unknown	42.9932	42.9958	-0.0026	0.0149	0.0151	-0.96	30.00	id.	
Unknown	43.1248	43.1284	-0.0036	0.0367	0.0365	0.54	30.00	id.	
Unknown	44.2929	44.2963	-0.0034	0.0238	0.0239	-0.35	30.00	id.	
Unknown	44.6777	44.6812	-0.0035	0.0533	0.0533	0.00	30.00	id.	
Unknown	44.9799	44.9836	-0.0037	0.3091	0.3088	0.09	15.00	id., Tail peak	

Results | Shifts | Areas
 Legend: Identical (green), Identical out of tolerance (blue), Reference only (grey), Sample only (white)

www.agilent.com/chem

This information is subject to change without notice.

DE.4014814815

© Agilent Technologies, Inc., 2020
Printed in the USA, July 29, 2020
5991-7866EN

