



Mineral oil in soil

Fast analysis of C₁₀ - C₂₅ mineral oil in soil

Application Note

Environmental

Authors

Agilent Technologies, Inc.

Introduction

GC analysis of mineral oil in soil is accomplished in four minutes with an Agilent Select Mineral Oil column, allowing determination of C₁₂ to C₂₅.

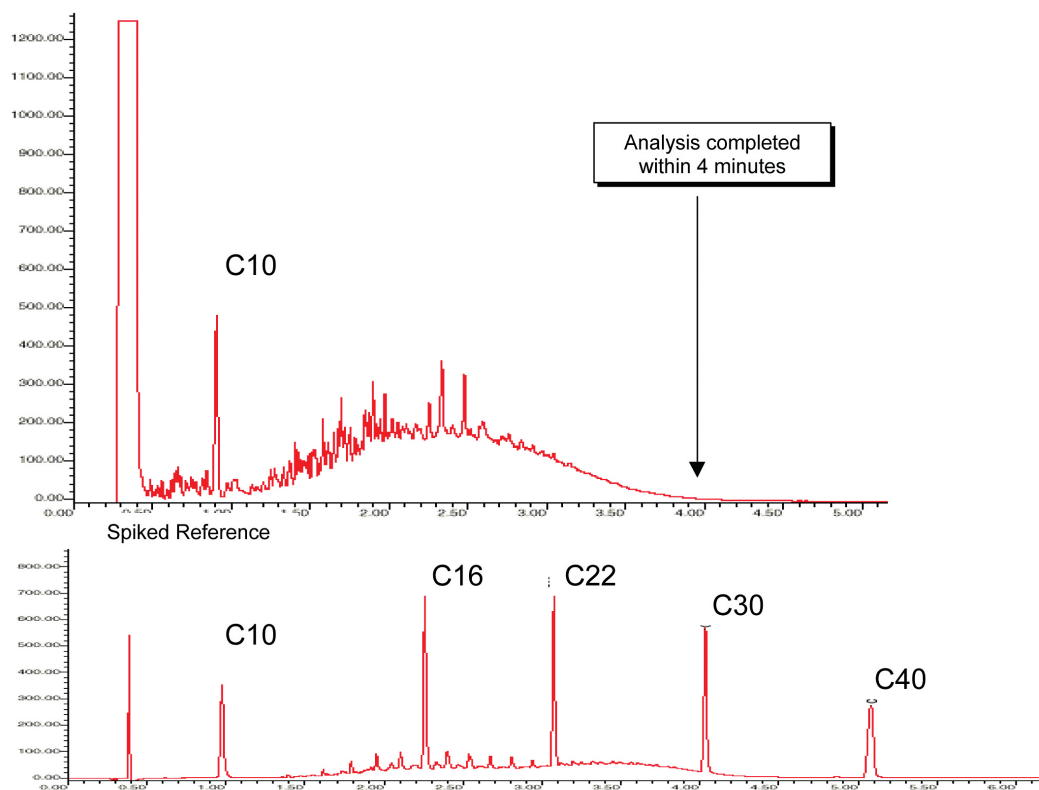


Agilent Technologies

Conditions

Technique : GC
Column : Agilent Select Mineral Oil, 0.32 mm x 15 m fused silica (optimized filmthickness) (Part no. CP7491)
Temperature : 55 °C → 320 °C, ballistic temperature program
Carrier Gas : Helium, 70 kPa
Injector : On-column
Detector : FID
Sample Size : 1.0 µL
Concentration Range : real sample, conc. > 400 mg/L

Courtesy : J. Volkers and J. de Smit, Analytico, Barneveld, The Netherlands



www.agilent.com/chem

This information is subject to change without notice.

© Agilent Technologies, Inc. 2011

Printed in the USA

31 October, 2011

First published prior to 11 May, 2010

A02021



Agilent Technologies