



**Thermo Scientific
Natural Gas Analyzers**

**Analyzers that
meet your demands**

Thermo
SCIENTIFIC

Analyzers for Natural Gas and Natural Gas Liquid

Over 20 standard analyzers available that meet your demands - tested and ready to start-up at installation. These cover BTU determination, composition analysis, and impurities (e.g., sulfur species).

Single Channel Analyzers - Lowest Price

Single Channel systems analyze a single sample at a time. Analyzers can be gas only, liquid only, or gas or liquid injection.

Dual Channel Analyzers - Best Value

Dual Channel analyzers can be configured to provide high sample throughput (e.g., dual-sample analysis by GPA 2261) for greater productivity. Dual Channel systems are also available to provide more data per sample — the GPA 2286 system provides both BTU content and detailed hydrocarbon profile for a single sample/injection.

Super Combination Systems - Most Capability

For maximum flexibility in a single analyzer, Super Combination systems handle both NG and NGL samples to meet the requirements of all four GPA methods, including O₂/N₂ and He/H₂.

An additional channel for sulfur detection by ASTM D6228 can be added to any system.

Thermo Fisher Scientific NG and NGL Analyzers			Natural Gas				Natural Gas Liquid	
Part number	Description	Samples	GPA 2261	O ₂ /N ₂	He/H ₂	GPA 2286	GPA 2177	GPA 2186
NATGAS010011	Natural Gas Analyzer with early back flush C6+ peak	1	✓					
NATGAS010021	Natural Gas Analyzer with early back flush C6+ peak plus O ₂ /N ₂	1	✓	✓				
NATGAS020271	Natural Gas Analyzer with early back flush C6+ peak and H ₂ /He	1	✓		✓			
NATGAS020281	Natural Gas Analyzer with early back flush C6+ peak plus O ₂ /N ₂ and H ₂ /He	1	✓	✓	✓			
NATGAS010031	Liquefied Natural Gas with early back flush C7+ peak	1					✓	
NATGAS010211	Natural Gas with C6+ plus O ₂ /N ₂ or LNG C7+ backflush	1	✓				✓	
NATGAS010041	Natural Gas extended hydrocarbon channel only	1				✓*		
NATGAS010051	Liquified Natural Gas extended hydrocarbon channel only	1						✓*
NATGAS010221	Natural Gas or LNG Analyzer extended hydrocarbon channel only	1				✓*		✓*
NATGAS020231	Natural Gas with C6+ and extended hydrocarbon channel	1	✓			✓		
NATGAS020261	Natural Gas with C6+ plus O ₂ /N ₂ and extended hydrocarbon	1	✓	✓		✓		
NATGASC20211	Natural Gas or LNG with C6+ or C7+ and extended hydrocarbon	1	✓			✓	✓	✓
NATGASC20221	Natural Gas or LNG with C6+ plus H ₂ /He or C7+ and extended hydrocarbon	1	✓		✓	✓	✓	✓
NATGAS020011	Dual sample Natural Gas with early back flush C6+	2	✓					
NATGAS020021	Dual Sample Nat Gas Analyzer with back flush peak plus O ₂ /N ₂	2	✓	✓				
NATGAS020031	Dual sample LNG Analyzer with early C7+ back flush peak	2					✓	
NATGAS020041	Dual sample Nat Gas Analyzer extended hydrocarbon channel only	2				✓*		
NATGAS020051	Dual sample Liquefied Natural Gas extended hydrocarbon channel only	2						✓*
NATGAS020211	Dual Sample Nat Gas or LNG with early back flush peak plus O ₂ /N ₂	2	✓	✓			✓	
NATGAS020221	Dual sample Nat Gas or LNG Analyzer extended hydrocarbon channel only	2				✓*		✓*
NATGAS040011	Four sample Natural Gas with early back flush C6+ peak	4	✓					

✓* = analyzer set up for the extended hydrocarbon analysis only

Custom Solutions

Do you have a specific requirement that is not covered by a standard analyzer? We will create a custom solution for you. Our team of experts will work with you to define your requirements to create a solution that meets your needs. Custom solution systems come with the same comprehensive documentation package as our standard analyzers.

Natural Gas Analysis

Pressure-Innovation-Solution

Hundreds of thousands of dollars change hands based upon the results of your assay - *pressure*. A plant many miles away sets up production based on your analysis - *pressure*. New contracts, more samples, and new labs open, promising faster turnaround times - *pressure*. There is constant pressure to be accurate, responsive, and competitive.

Thermo Scientific™ natural gas analyzers are built to meet your demands and to provide innovative solutions to relieve this constant pressure. Designed by natural gas experts with over 30 years of industry experience, our analyzers are configured and tested to the exact methods you follow:

- GPA – 2261, 2177, 2186, 2286
- ASTM – D1945, D1946
- DIN – 51872-5
- ISO 6974





It Starts with the Gas Chromatograph

The innovation in the TRACE™ 1300 Series GC Gas Chromatograph will change the way you manage your GC systems - forever *and for the better*.

"Instant Connect" modularity, a patented Thermo Fisher Scientific technology, has completely revolutionized GC design. These modules incorporate all relevant pneumatic hardware and electronic parts necessary for making the injector or the detector a fully self-sufficient sub-unit of the instrument. The modules are plugged in to the top part of the GC, automatically configured into the system, and connected to the gas supply lines. Installing a module takes only two minutes.

- No special training required - reduce training costs
- No need for a service call - reduce cost of ownership
- No extended downtime - higher uptime and more samples per month

Valve, Plumbing and Valve Ovens

Each natural gas analyzer is delivered ready to run your samples. Our solutions maximize performance and minimize footprint.

Compact Valve Oven - simplified configurations

- Valves: Two heated or unheated
- Maximum temperature: 160 °C
- Easy access bulkhead In/Out fittings

Auxiliary Oven - increased capacity, flexibility and capability

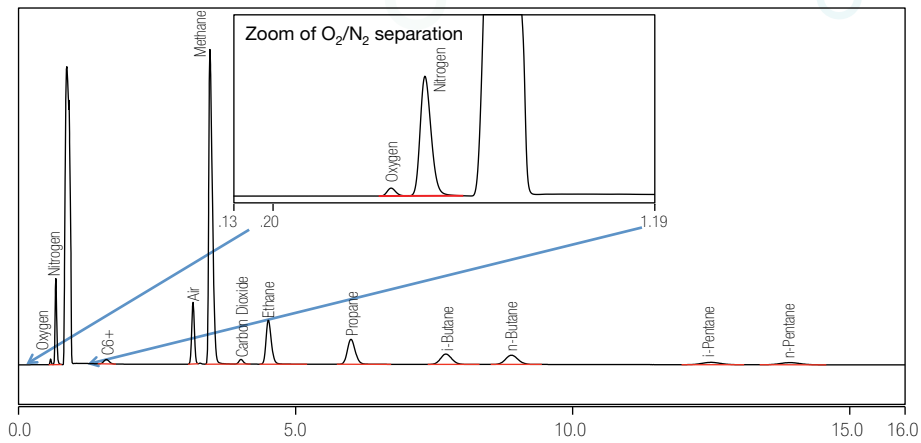
- Valves: Up to six heated and two unheated rotary valves
- Maximum temperature: 350 °C
- Room for multiple columns
- Optional separate column oven module for additional isothermal zone
- Optional two detector module on top - simultaneous and independent 4-channel capability

We deliver more to meet your demands

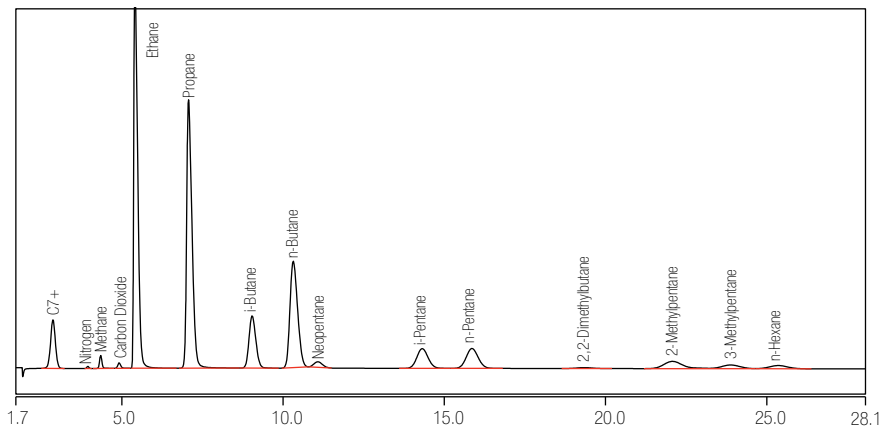
Thermo Fisher Scientific natural gas analyzers are designed, built and tested to meet method requirements, withstand the rigors of high throughput production labs, and increase analytical performance.

- Accurate and Reproducible - Confidence in results every time
- Robust - Built to optimize high sample loads
- Reliable - Maximized throughput and minimized downtime

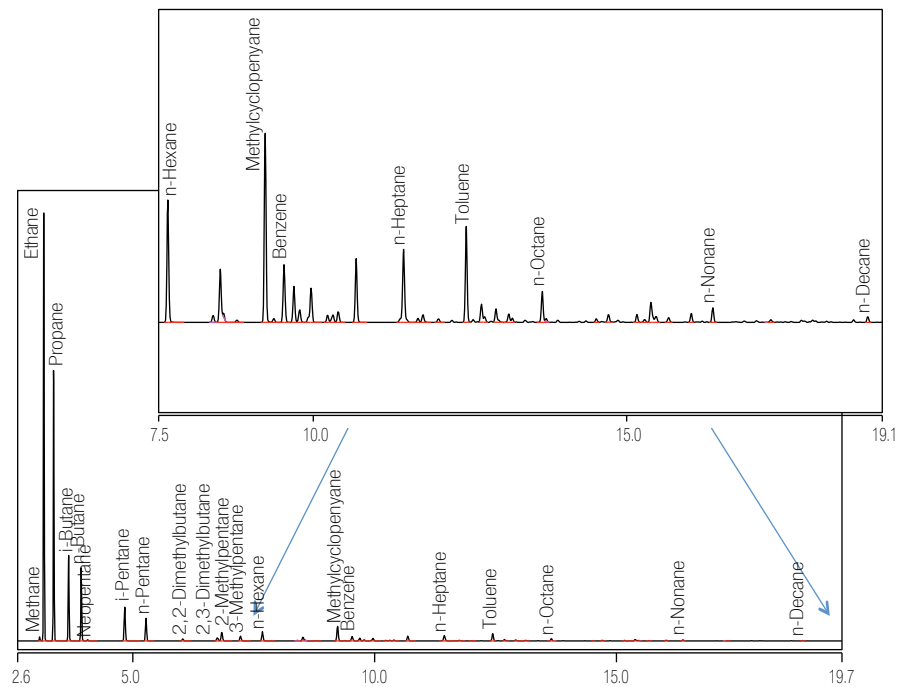




Natural Gas Sample – C6+ Early Regroup with Oxygen/Nitrogen Separation



Natural Gas Liquid Sample – C7+ Early Regroup



Extended Chromatogram for GPA 2186 (inset zoom of C6+)



www.thermofisher.com

©2016 Thermo Fisher Scientific Inc. All rights reserved. All trademarks are the property of Thermo Fisher Scientific and its subsidiaries. This information is presented as an example of the capabilities of Thermo Fisher Scientific products. It is not intended to encourage use of these products in any manners that might infringe the intellectual property rights of others. Specifications, terms and pricing are subject to change. Not all products are available in all countries. Please consult your local sales representative for details.

Africa +43 1 333 50 34 0
Australia +61 3 9757 4300
Austria +43 810 282 206
Belgium +32 53 73 42 41
Brazil +55 11 2730 3006
Canada +1 800 530 8447
China 800 810 5118 (free call domestic)
400 650 5118

Denmark +45 70 23 62 60
Europe-Other +43 1 333 50 34 0
Finland +358 10 3292 200
France +33 1 60 92 48 00
Germany +49 6103 408 1014
India +91 22 6742 9494
Italy +39 02 950 591

Japan +81 6 6885 1213
Korea +82 2 3420 8600
Latin America +1 561 688 8700
Middle East +43 1 333 50 34 0
Netherlands +31 76 579 55 55
New Zealand +64 9 980 6700
Norway +46 8 556 468 00

Russia/CIS +43 1 333 50 34 0
Singapore +65 6289 1190
Sweden +46 8 556 468 00
Switzerland +41 61 716 77 00
Taiwan +886 2 8751 6655
UK/Ireland +44 1442 233555
USA +1 800 532 4752

Thermo
SCIENTIFIC

A Thermo Fisher Scientific Brand