



See What's Really There™

Air Monitoring Sorbent Pens™ (Pat. Pend.)
For Environmental & IH Applications




**AIR MONITORING
SORBENT PENS™**
For Environmental &
IH Applications



Sorbent Pens™ for Quantitative Air Monitoring

Sorbent Pens mark the latest innovation in quantitative air monitoring from Entech Instruments. These adsorbent based samplers can either be used to collect air via diffusion without the aid of a pump or vacuum device (Diffusive Sorbent Pens, or DSPs), or they can be actively sampled by drawing air through them (Active Sorbent Pens, or ASPs). Unlike the standard thermal desorption tubes that use the same geometry to do either diffusive or active sampling, Sorbent Pens have been optimized to improve performance for both sample collection approaches. This has been done to optimize the quantitative results, and to increase the durability and lifetime of each adsorbent based air monitoring device.

DSP - Diffusive Sorbent Pens™



8 hours to 2 weeks

Sun	Mon	Tue	Wed	Thu	Fri	Sat
		1	2	3	4	5
6	7	8	9	10	11	12
13	14	15	16	17	18	19
20	21	22	23	24	25	26
27	28	29	30	31		

When To Use?


- Use when sampling for **8 hours to 2 weeks**
- When method calls for diffusive sampling

Benefits?


- Very easy use
- No pumps or vacuum source
- Uptake rate known for dozens of compounds
- Ideal for BTEX monitoring
- Both Environmental and Industrial Hygiene applications

See page 2

ASP - Active Sorbent Pens™



5 minutes to 8 hours



When To Use?

- Use for faster sample collection:
5 min to 8 hours
- When method requires an active sampling

Benefits?

- Multiple adsorbent traps are available which substantially increases the range of recoverable compounds
- Accurate volume collection measurements made using Entech's Accu-Bottle vacuum sampler

See page 13

Sorbent Pens™ for Diffusive Air Monitoring

Entech Sorbent Pens™ represent an advancement in passive 'diffusive' sampling, incorporating many subtle but critical engineering design elements that ensure quantitative recovery, reproducibility, and cost effective long term use. The result of decades of research into volatile chemical sampling and analysis has resulted in a sampler with incredible accuracy and reproducibility.

Diffusive sampling is defined as the unassisted molecular diffusion of gaseous analytes through a diffusive region and onto an adsorbent. The DSP (Diffusive Sorbent Pen) does not require a pump and contains no moving parts. After sampling, the adsorbed analytes are desorbed directly into the GC or GCMS of choice.

Benefits of passive/diffusive sampling:

- Compact, portable, unobtrusive, and inexpensive
- Offers indication of average pollution levels over time periods of 8 hours to several weeks
- Requires no supervision, is noiseless and can be used in hazardous environments
- Low cost allows for sampling at multiple locations (e.g., for highlighting pollution "hotspots"; or determining long term data trends in a specific geographical area)
- Amenable to personal monitoring (breathing zone), indoor air analysis, and outdoor ambient air analysis



Name / Geometry	Adsorbent	Part #	Label Color	Label	Effective Range	Packing Diagram
Diffusive Sorbent Pen (1/4" OD)	Blank / Empty	SP-DSP-0	Yellow		NA	
Diffusive Sorbent Pen (1/4" OD)	Carboxen® 1000	SP-DSP-C1000	Green		-60°C to 80°C	
Diffusive Sorbent Pen (1/4" OD)	Carbo-pack™ C	SP-DSP-CPC	Purple		125°C to >400°C	
Diffusive Sorbent Pen (1/4" OD)	Carbo-pack™ X	SP-DSP-CPX	Blue		80°C to 145°C	
Diffusive Sorbent Pen (1/4" OD)	Carbo-pack™ Y	SP-DSP-CPY	Gray		150°C to >400°C	
Diffusive Sorbent Pen (1/4" OD)	Tenax® TA 35/60	SP-DSP-T3560	White		100°C to > 450°C	

Diffusive Sorbent Pens™ for Passive BTEX Monitoring

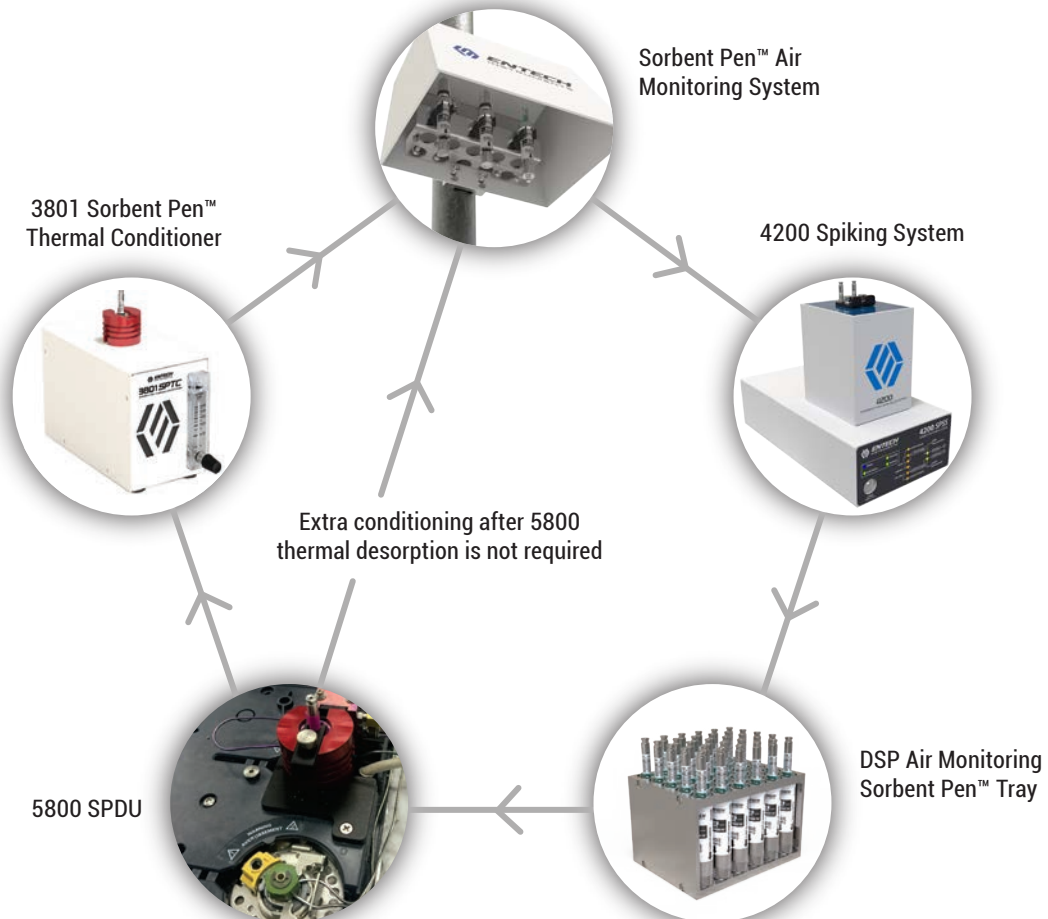


Passive BTEX Sampling for Fenceline or Community Monitoring

- 8 hr - 2 week passive sampling provides highly reproducible results for BTEX and similar boiling range VOCs.
- More reproducible than radial samplers because sample is backflushed during thermal desorption rather than pushed through the entire adsorbent bed.
- Carbon Tetrachloride is quantitatively recovered, so Global background of 70 ppt can be used to validate proper sampling when performing GCMS or GC/FID/ECD



An Affordable End-to-End Solution



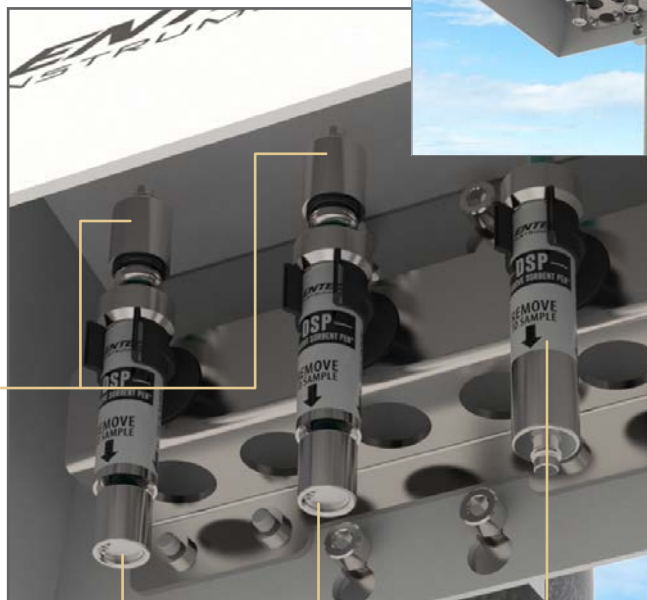
Sorbent Pen Air Monitoring Components



Isolated Sorbent Pen for storage and transportation from lab to field and back. No crushing of tops and bottoms of tubes, common with nuts and ferrules on 3.5" TD tubes, so sampling rates remain the same.

During sampling bottom caps are placed on top of the Sorbent Pens for safe keeping.

Diffusers to prevent wind from affecting sampling rates



Field Blank (not sampling)



BTEX Sorbent Pen Comparison to Canister Sampling and Triplicate Pen Results at Elevated Levels

	Benzene	Toluene	Ethybenzene	m,p-Xylene	o-Xylene
Rate of Collection:	0.67+-0.06	0.52+-0.14	0.46+-0.07	0.46+-0.09	0.46+-0.12
Total Volume, 163 Hrs	6553	5086	4499	4499	4499
			Concentrations (PPBv)		
Ambient Air Tube#1	0.101	0.185	0.044	0.111	0.040
Ambient Air Tube#2	0.089	0.173	0.036	0.098	0.040
%RSD Amb Air Tubes	9.09%	4.66%	13.31%	7.96%	0.00%
Ambient Air Canisters (Ave)	0.076	0.340	0.043	0.109	0.045
Parking Lot Tube #1	0.63	2.98	0.31	1.08	0.36
Parking Lot Tube #2	0.62	2.89	0.30	1.06	0.35
Parking Lot Tube #3	0.63	2.91	0.29	1.06	0.36
%RSDs ParkLot Tubes	0.49%	1.68%	2.75%	0.89%	1.32%

BTEX Data for 1 week duplicate diffusive samples compared to 6L canister samples, and triplicate 1 week diffusive tubes at elevated levels. The reproducibility was better than anticipated for a diffusive technique, and the ability to inject the sample directly onto the GC column probably contributed to the consistency in the results.

Diffusive Monitoring of BTEX

Collection Times 8 Hours to 2 Weeks

- The sampling end of the Diffusive Sorbent Pen™ exactly meets EPA 325 requirements for diameter and distance to adsorbent
- A diffuser is used at the end of each tube to prevent convective transfer during windy days
- No LN2 needed. Typical split of 20:1 produces low part per trillion detection limits
- A 0.5um x 5m pre-column and an Entech CL-BTEX-30 main column allow compounds heavier than BTEX to be backflushed off of the pre-column for much shorter run times
- Internal Standard can be added to each tube before analysis

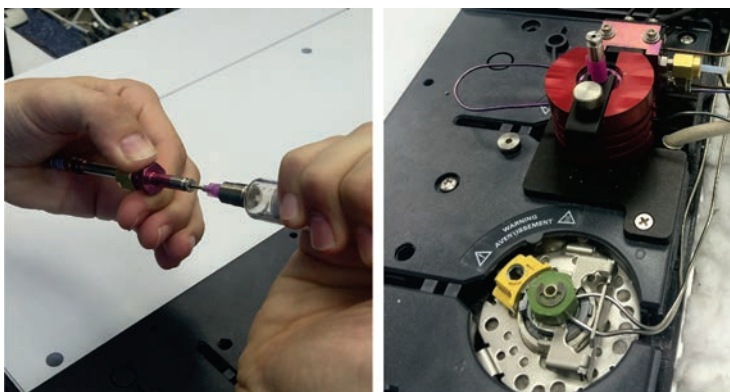
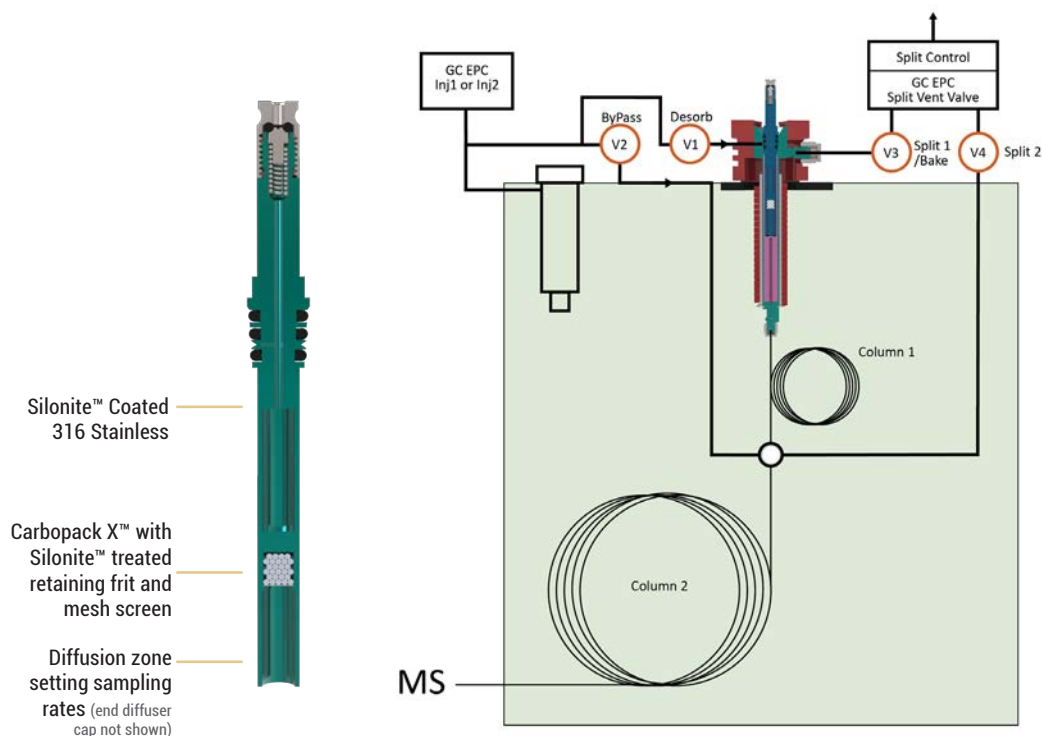


Figure 1 (above) - Diffusive Sorbent Pen developed for BTEX monitoring over 8 hours to 2 weeks. The Carbopack adsorbent is positioned to create reliable sample collection rates. The 5800 SPDU allows rapid injection into the GC, and controls the diversion of the carrier gas to back flush off heavy compounds before they reach the second more highly retentive column. Expensive and complicated secondary preconcentration systems, electronic cooling, transfer lines, and rotary valves are avoided.

Gaussian Peak Shape without LN2 Focusing. Back-flushing Eliminates Ghost Peaks and Reduces Run Times

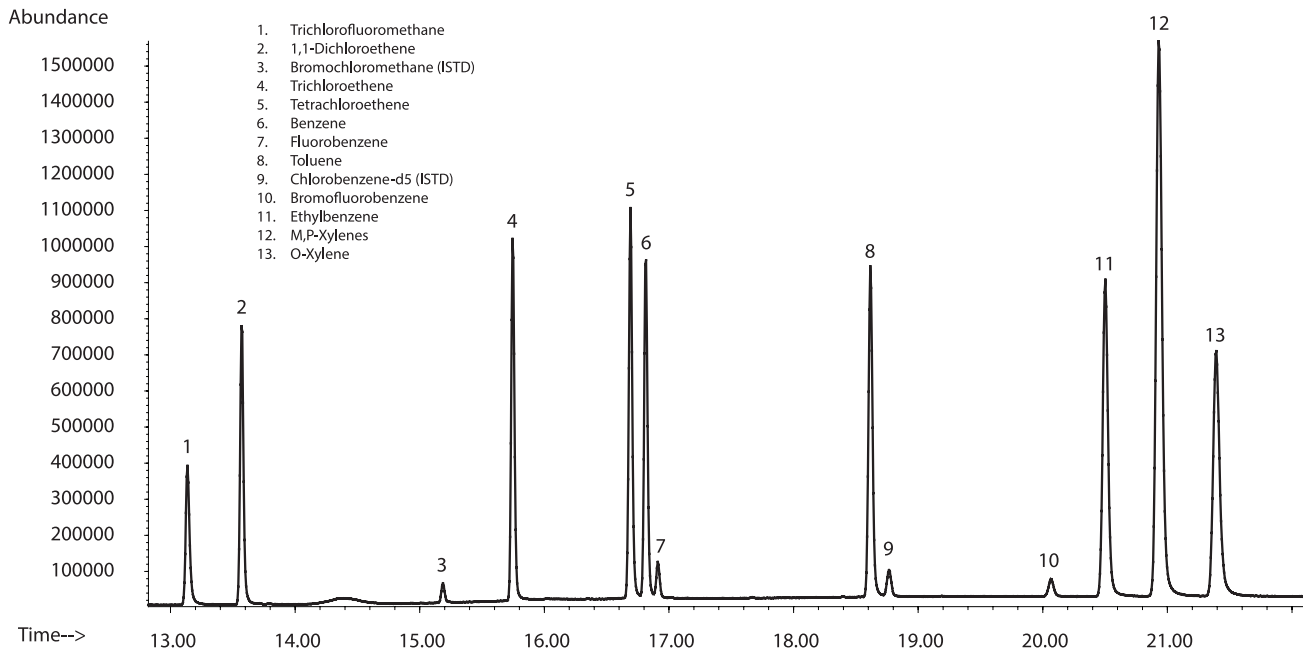


Figure 2 - BTEX Standard Corresponding to 6 PPBv for Benzene as sampled for 1 week.

Triplicate Sampling of Diffusive Sorbent Pen Virtually perfect overlap of BTEX Compounds

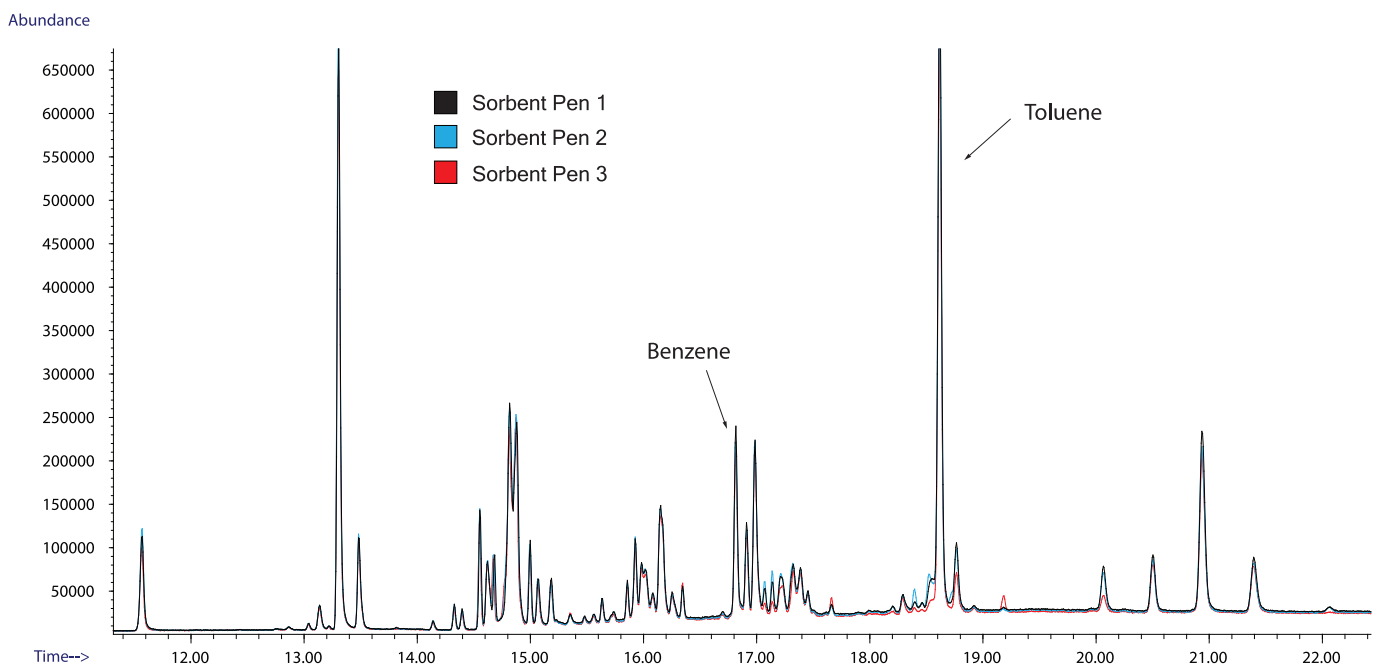
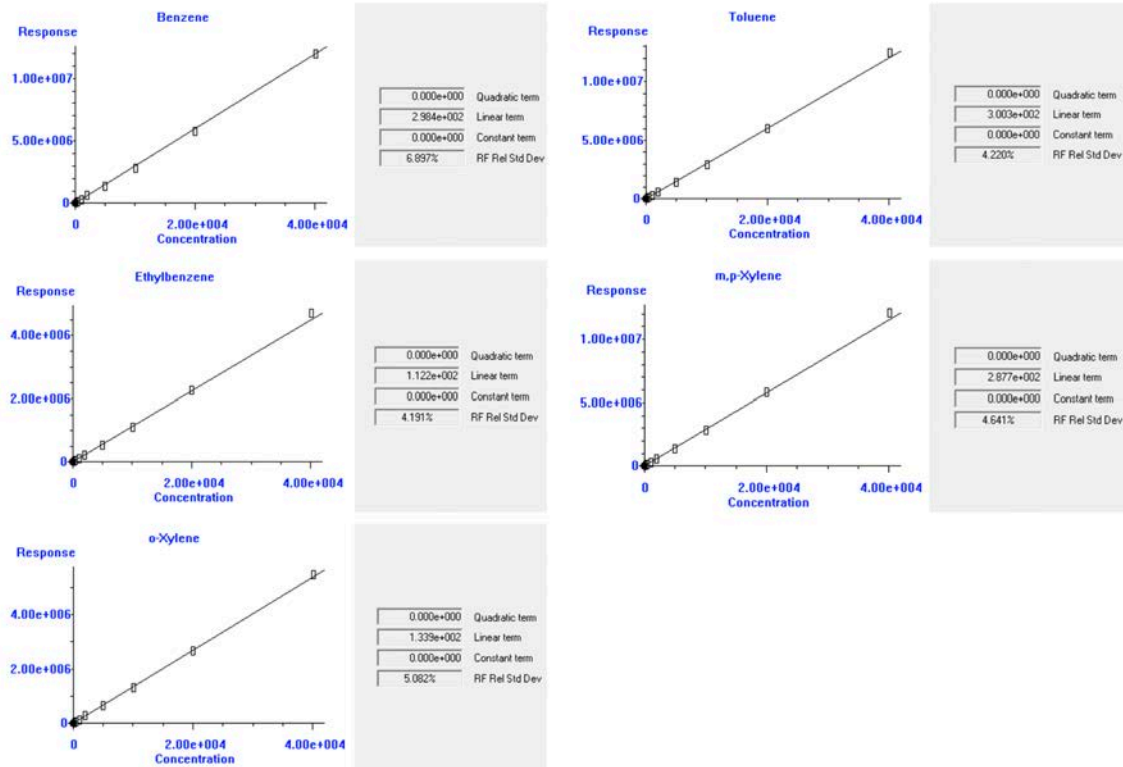


Figure 3 - Triplicate tubes placed in parking lot near parked vehicles to increase BTEX Concentrations. Sampling was performed over a 1 week period. Overlap of BTEX is virtually perfect.

4200 Sorbent Pen Spiking System

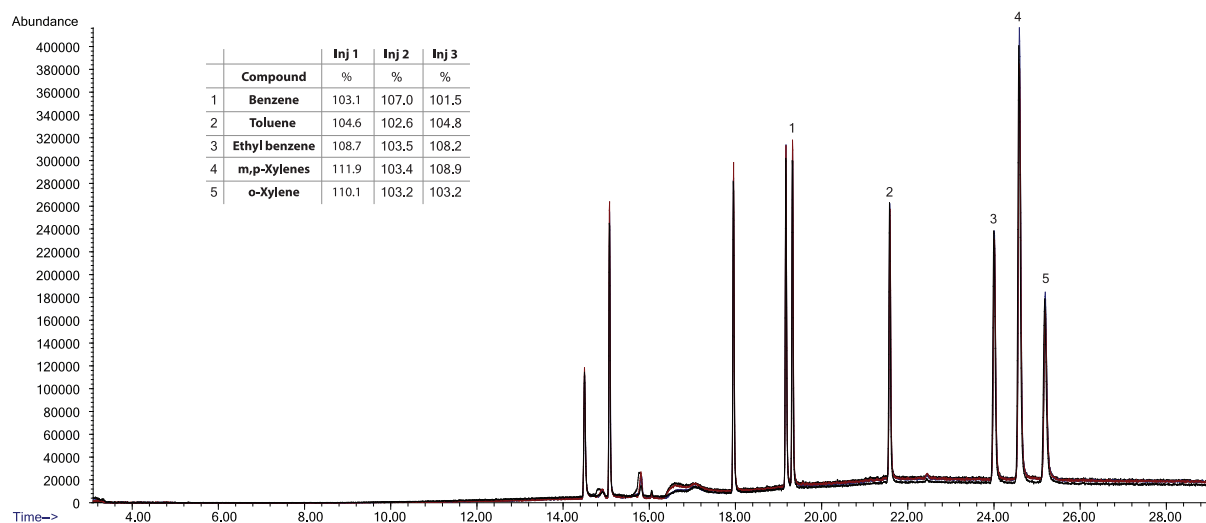
For Sorbent Pen Air Monitoring Solutions

- Fully automated way to create accurate spiking of standards onto Sorbent Pens
- Separate Calibration Standard and Internal Standard spiking ports to prevent any possibility of cross contamination
- Can spike 1 to 200cc of calibration standard or 5cc of internal standard automatically using calibrated reservoirs
- Self purges using UHP Nitrogen
- Compatible with all Sorbent Pens, but primarily intended for DSP and ASP Air Monitoring Pens
- Not compatible with 3.5" TD Tubes
- Single model handles all voltages (90-250VAC)



- Calibrations were performed over a 200x range. The 4200 performed all spikes automatically.
- All compounds had %RSDs within 4-7%.
- US EPA Method 325 allows for up to a 30% Relative Standard Deviation, so the Sorbent Pen™ easily meets this criteria.
- Concentrations were based on the sampling rate for Benzene, and how much would have loaded during the 2 week sampling period specified in Method 325.

Gaussian Peak Shape without LN2 Focusing. TriPLICATE 4200 5cc BTEX Spike Compared to a Manually Spiked Sorbent Pen



- Manual injection was performed using a glass, gas-tight syringe. The 4200 spiked Sorbent Pens were generally 3-10% higher, especially for the heavier compounds, which could be the difference between affinity to the glass syringe and the reduced affinity to the Silonite™ coated reference volumes in the 4200
- Retention times were identical for both the manually spiked and the 4200 spiked Sorbent Pens

Description	Unit	Part #
DSP 325 Bundle*		
Diffusive Air Monitoring Bundle DSP-B01, 120VAC - GC Mounting Kit Ordered Separately (BTEX and Other Compounds, Meets EPA Method 325 Requirements)	EA	SP-DSP-B01
Sorbent Pen Thermal Desorption Unit (120VAC/60Hz) - Order GC install kit separately	EA	5800-SPDU
5800 Liner for HSP and DSP Sorbent Pens - Silonite™ Coated	EA	5800-LNR-SP
Sorbent Pen Spiking System (1 - 200cc from regulated cylinder)	EA	4200-SPSS
BTEX Plus Cylinder, 800L, 2.7PPM Benzene, 350 CGA Fitting	EA	40-SP-325-27
1,4-Bromofluorobenzene Cylinder, 800L, 10PPM, 350 CGA Fitting	EA	40-SP-BFB-100
High Purity Regulators	2	40-02004
Sorbent Pen™ Thermal Conditioner (120VAC/60Hz)	EA	3801-SPTC
Diffusive Sorbent Pen - CarboPack X	EA	SP-DSP-CPX
Blank Diffusive Sorbent Pen	EA	SP-DSP-0
30 Position Tray - Diffusive Sorbent Pens. Manual or 7800 Autosampler	EA	SP-DSPTray30
PDMS Pre-Column, 5m x 0.53mmID, 0.5um	EA	56-10530-05
Diffuser Caps (Prevents Convective Sampling in windy conditions)	10pk	SP-DSP-DFCAP
3-Position Diffusive Pen Monitoring Station	EA	SP-DSP-AMS3

* Add "-HV" after part# for 220-240VAC Operation (e.g. SP-DSP-B01-HV)

Diffusive Sorbent Pens™ for Personal Monitoring



DSP Badge Samplers

More Reliable and Sensitive than Solvent Extraction Badges



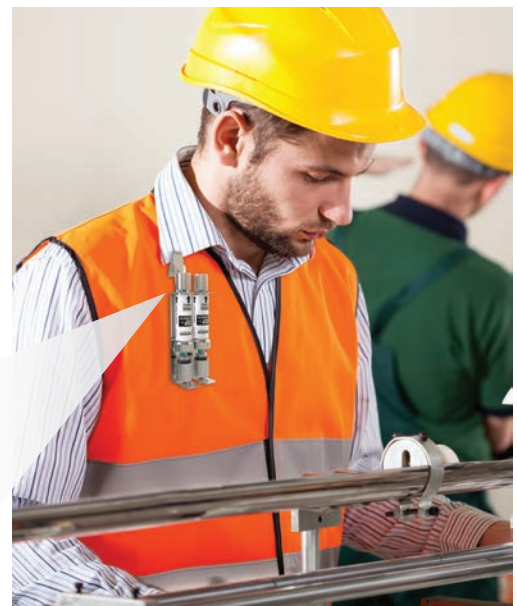
- Diffusive sampler that collects a wide range of compounds
- Several adsorbents available depending on compounds to be collected
- The DSP Badge has several advantages
 - Higher sensitivity due to much greater percentage of sample reaching the detector during analysis (thermal desorption rather than solvent extraction)
 - 20-60 times lower sampling rates, so far less likely to "starve" during sampling (common problem with other badges)
- Easier Analysis. Just spike and desorb



DSP Badge Samplers

Dual Sampler also Available

- Allows DSP Badges with different adsorbents to be used together to increase range of chemicals to be monitored
- Perfect when duplicates are needed
- Uses diffusers on the Pen inlets to prevent convective transfer, so diffusion is the only transport mechanism onto the adsorbent
- Just like badges, chemicals will have different diffusion rates, but the Diffusive Sorbent Pens have adopted the same inlet geometry used by 3.5" diffusion TD Tubes, so sampling rates for a large number of compounds are already known.



DSP Badge Personal Monitors

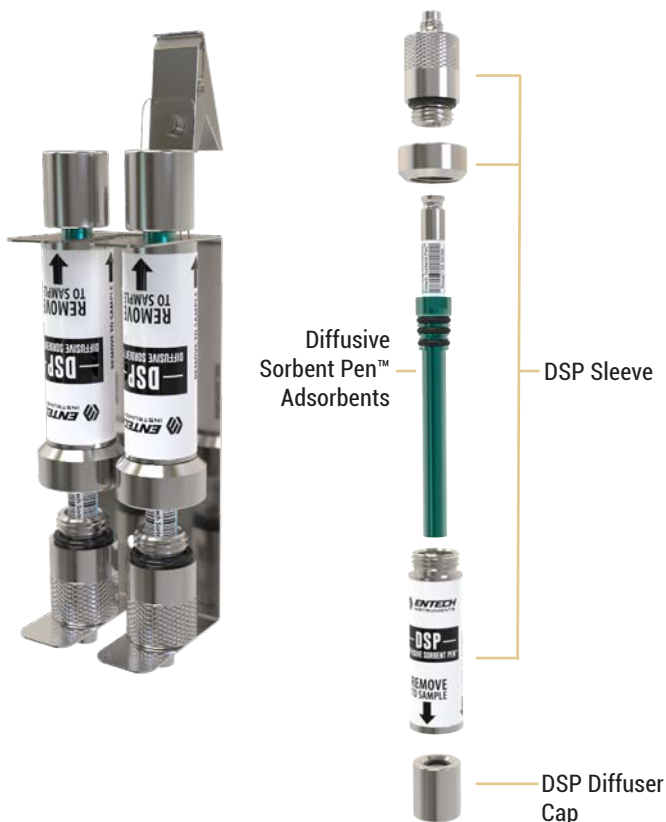
Approximate Molecular Wt Range Based on Sorbent Type

Diffusive Sorbent Pen™ Adsorbents

Description	Unit	Part #
Carboxen 1000 (C3-C6)	EA	SP-DSP-C1000
Carbopack X (C4-C8)	EA	SP-DSP-CPX
Carbopack Y (C9-C14)	EA	SP-DSP-CPY
Carboxen C (C14-C22)	EA	SP-DSP-CPC
Tenax TA 35 / 60 Mesh (C10-C20)	EA	SP-DSP-CPX

Individual Parts	Unit	Part #
DSP Sampler Single Clip	EA	SP-DSP-PM01
DSP Sampler Double Clip	EA	SP-DSP-PM02
DSP Sleeve	EA	SP-DSP-SLEEVE
DSP Diffuser Cap	EA	SP-DSP-DFCAP

Note: For diffusive sampling, each compound must irreversibly "stick" to the adsorbent in order for quantitative collection to occur. This is why the lowest acceptable carbon number is "higher" than with active sampling. Also, carbon number ranges above are approximate and must be verified for each compound.



Diffusive Sorbent Pen / 5800 SPDU Advantages over Classical 3.5" TD Tubes



- Improved design allows much lower blank levels
- Tube ends will not crush, as classical compression fittings are avoided
- This keeps sampling rates the same from tube to tube
- Direct desorption into GC improves recovery and reproducibility
- Pre-Column backflush eliminates the buildup of high molecular weight compounds
 - Simple replacement of liner and pre-column creates an entirely new flow path, essentially creating a "new" system
 - Very simple to operate, understand, and maintain
 - The secondary traps and transfer lines in externally desorbed TD tube systems allows deposition of 4-7 ring PAH compounds that will eventually reduce recovery of light compounds, while increasing column bleed and bakeout times. Difficult to replace flow path
- The 5800 SPDU and the 7200 can both connect into the same GCMS simultaneously with no replumbing to switch from Sorbent Pens to Canisters.

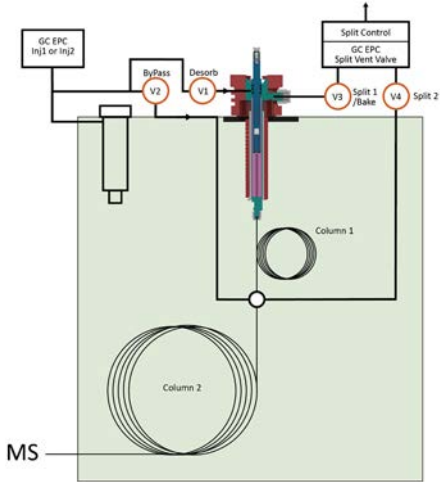
Sampling Rates of Several Compounds into SP-DSP-CPX

Compound	Carbopack™ X
1, 1-Dichloroethene	0.57 ±0.14
3-Chloropropene	0.51 ±0.3
1, 1-Dichloroethane	0.57 ±0.1
1, 2-Dichloroethane	0.57 ±0.08
1,1,1-Trichloroethane	0.51 ±0.1
Benzene	0.67 ±0.06
Carbon tetrachloride	0.51 ±0.06
1, 2-Dichloropropane	0.52 ±0.1
Trichloroethene	0.5 ±0.05
1, 1, 2-Trichloroethane	0.49 ±0.13
Toluene	0.52 ±0.14
Tetrachloroethene	0.48 ±0.05
Chlorobenzene	0.51 ±0.06
Ethylbenzene	0.46 ±0.07
m, p-Xylene	0.46 ±0.09
Styrene	0.5 ±0.14
o-Xylene	0.46 ±0.12
p-Dichlorobenzene	0.45 ±0.05

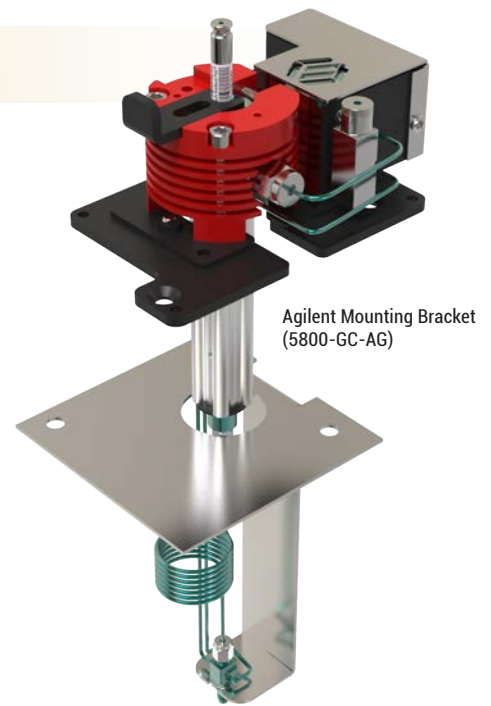
5800 SORBENT PEN™ DESORPTION UNIT

Sorbent Pens™ are analyzed using the 5800 SPDU. After sample enrichment, simply insert the Sorbent Pen™ into the 5800 SPDU, and press START on the 5800 SPDU Controller. The complete desorption process is performed automatically to transfer both volatile and semi-volatile compounds onto the GC-column for extremely sensitive and accurate headspace analysis. Control the extraction and desorption conditions to either limit or optimize the molecular weight range transferred onto the column. A unique desorber design utilizes a Silonite™ coated flow path, allowing simple liner replacement to maintain maximum inertness

for optimum long-term performance. Methods are created and stored on the same PC operating the GCMS. Develop methods using this entry level solution and then add the SPR Autosampler when you are ready to fully automate the analysis of up to 120 Sorbent Pens™.



5800 SPDU - Easily transfers volatile and semi-volatile compounds to a GCMS for extremely sensitive and accurate headspace analysis.



Agilent Mounting Bracket (5800-GC-AG)



5800 SPDU Ordering Information

Description	Unit	Part #
Sorbent Pen™ Desorption Unit (120VAC)	EA	5800-SPDU
Sorbent Pen™ Desorption Unit High Voltage (230VAC)	EA	5800-SPDU-HV
Consumables & Replacement Parts		
5800 Insert for HSP, DSP, ASP Pens (Silonite coated)	EA	5800-INSERT
HSP/DSP/GSP Glass Liner for 0.53mm ID Column 1	EA	5800-LNR-HD-1mm
HSP/DSP/GSP Glass Liner for 0.53mm ID Column 1 w/ Glass Wool	EA	5800-LNR-HD-1mm-GW
HSP/DSP/GSP Glass Liner for 1/16" OD Column 1	EA	5800-LNR-HD-2mm
HSP/DSP/GSP Glass Liner for 1/16" OD Column 1 w/ Glass Wool	EA	5800-LNR-HD-2mm-GW
GC Model Mounting Kits* (Must select one)		
Agilent 6890 / 7890(B)	EA	5800-GC-AG
Thermo 1300 / 1310 GC	EA	5800-GC-TH
Shimadzu 2010 GC	EA	5800-GC-SH

* Required component



Shimadzu Mounting Bracket (5800-GC-SH)



Thermo Mounting Bracket (5800-GC-TH)

SPR

Sample Preparation Rail

Diffusive Sorbent Pen™ Automation

Take productivity to a whole new level by combining the award winning Sorbent Pen™ solution with Entech's new Sample Preparation Rail (SPR). Enjoy automated spiking and analysis of up to 90 samples.



START HERE.

Sample Preparation Rail Bundle



Description	Qty	Unit	Part #
Sample Preparation Rail Bundle for Air Monitoring Sorbent Pens DSP/ASP (120-240VAC)	1	EA	SPR40-DA01
- Sample Preparation Rail System	1	EA	SPR40
- 5800 Controller Platform with Rail Clamp	1	EA	SPR-PF-CTRL1
- Dual isolation tray platform w/legs & magnetic sensor rail clamps	1	EA	SPR-PF-TR2
- 30 Position Tray for Diffusive Sorbent Pens™	2	EA	SP-DSP-TRAY30
- SPR Flow Module	1	EA	SPR-FM
- Sorbent Pen Spiking Portal	3	EA	SP-PENSPIKE
- Sorbent Pen Focusing System	1	EA	SPR-CTS-SP

NOT INCLUDED IN BUNDLE.

You must also select a GC Rail Mounting Kit with the bundle.



SPR GC Mounting Kits		
Rail Mounting Kit for Agilent® GC	EA	SPR-MNT-AG
Rail Mounting Kit for Thermo® GC	EA	SPR-MNT-TH
Rail Mounting Kit for Shimadzu® GC	EA	SPR-MNT-SH

ASPs - Active Sampling with Sorbent Pens™



Active sampling dramatically speeds up the sampling process, because rather than sampling at about 0.5cc/min via diffusion, the sampling rates can be increased to several cc's per minute. This is accomplished by providing both a vacuum source to draw the air through the sampler, and a way to measure the total volume of air sampled. Although adding a vacuum device that also measures the collected volume adds complication and cost to the sampling event, there are many advantages to performing active sampling:

1. Samples are collected over a shorter period of time. This is advantageous when the period of investigation for toxicology reasons must be below 8 hours.
2. A much wider range of compounds can be recovered, by using a multi-bed trap.

Multi-bed traps are packed with weak adsorbents at the trap's entrance, and then use stronger adsorbents further into the trap. This creates an adsorbent strength gradient that allows heavier VOCs to be recovered without using extremely high temperatures, while still recovering the lighter compounds that would have otherwise broken through if only using a weaker adsorbent. A typical number of adsorbents in a multi-bed trap is 3, above which there are diminishing returns relative to the difficulty in pack these traps reproducibly.

One of the more important disadvantages in active air sampling onto adsorbents can be eliminated by simply collecting air at a slower rate. When sampling at rates that are more than about 20-30 times the diffusion rate, a phenomenon called "channeling" starts to create a lot of inconsistencies in sample penetration into the tubes, and therefore consistency from tube to tube, and even carryover from one sampling event to the next. Like almost all materials, adsorbents expand when they are heated and then contract upon cooling. When adsorbents contract, they leave gaps that are low impedance flow paths that allow chemicals in air to penetrate much further into the tube than if these gaps are not present. Since these gaps are inconsistent from tube to tube, the extent of penetration will also be inconsistent. When the sampling rates are slowed down, the extent of penetration into the tube will decrease, and recoveries between tubes will become more similar, despite a different pattern of channels within each adsorbent tubes.

The Active Sorbent Pen has been designed to not only minimize the creation of channels, but they have a very small entrance hole that allows sampling rates to be reduced to very low rates without the potential for reverse adsorption off the front of the tube. Optimal sampling rates from 0.2 to 20 cc/min are used to achieve rapid sampling onto multi-bed traps to recover a very wide range of compounds, from C3 to over C25. Like all Sorbent Pens™, the ASPs are desorbed with 2 cm of the GC column to not only trap these compounds, but then deliver them quantitatively onto the GC column. The simple replacement of the 5800 SPDU liner provides a completely new flow path to the GC column, eliminating the potential for degradation of analytical performance over time.

Name / Geometry	Adsorbent	Part #	Label Color	Label	Effective Range	Packing Diagram
Active Sorbent Pens (1/4" OD)	Tenax® TA 35/60	SP-ASP-T3560	White		100°C to > 450°C	
Active Sorbent Pen (1/4" OD)	Glass Bead / Tenax® TA 35/60	SP-ASP-GBT3560	Red / White		100°C to > 450°C	
Active Sorbent Pens (1/4" OD)	Tenax® / Carboxen™ X	SP-ASP-TCPX	White / Blue		80°C to >450°C	
Active Sorbent Pens (1/4" OD)	Carboxen™ C & B/ Carboxen® 1000	SP-ASP-CPCBC1000	Purple / Green		-60°C to >400°C	
Active Sorbent Pens (1/4" OD)	Blank / Empty	SP-ASP-0	Yellow		NA	
Active Sorbent Pens (1/4" OD)	Tenax® + Carboxen® 1000	SP-ASP-TCBXN	White/Green		-60°C to >450°C	

Collecting ASP Samples using the “Accu-Bottle Sampler”

Another source of errors when actively sampling air onto adsorbent tubes comes from incorrectly measuring the volume that passes through the tube. Generally, time and flow rate is used to collect a known volume, but flow rates using sampling pumps are not always constant, and pumps that measure and record flow rates are very expensive and can still suffer from flow measurement errors. Entech has developed a simple means of controlling flow and directly measuring trapping volumes that is far more accurate, reliable, and best of all cost effective. Using the Accu-Bottle sampler, a bottle of known volume is evacuated either in the lab or in the field, and then sampling is either performed until the bottle reaches atmospheric pressure, or until a desired pressure increase has occurred. The Accu-Bottle sampler uses precision flow elements to sample at either 10, 20, or 30cc/min, based on volumes and sampling times desired. Again, to avoid channeling and reduced recoveries, the best data will be obtained when sampling at 10-20cc/min, although 30cc/min is acceptable in some cases. A simple pump can be used to recharge the Accu-Bottle sampler in the field, or samplers can be evacuated in the lab, and will remain under vacuum for weeks awaiting use in the field. With the Accu-Bottle samplers, tube to tube consistency is dramatically improved, allowing active sampling to be a reliable means for quantitative air measurements over a very wide molecular weight range.

Description	Unit	Part #
10cc/min 250mL Accu-Bottle™ Sampler	EA	SP-ABS250-010
10cc/min 500mL Accu-Bottle™ Sampler	EA	SP-ABS500-010
10cc/min 1L Accu-Bottle™ Sampler	EA	SP-ABS1000-010
30cc/min 250mL Accu-Bottle™ Sampler	EA	SP-ABS250-030
30cc/min 500mL Accu-Bottle™ Sampler	EA	SP-ABS500-030
30cc/min 1L Accu-Bottle™ Sampler	EA	SP-ABS1000-030



*Sorbent Pens™ - A Revolutionary Extraction Technology
That Is Quantitative By Design.*

Learn more about us:



entechinst.com



facebook.com/entechinst



twitter.com/entechinst



linkedin.com/company/entech-instruments-inc

Entech Instruments
2207 Agate Court
Simi Valley, CA 93065
Phone: 805-527-5939

Air Monitoring Sorbent Pens™ - 200310 - 12.1