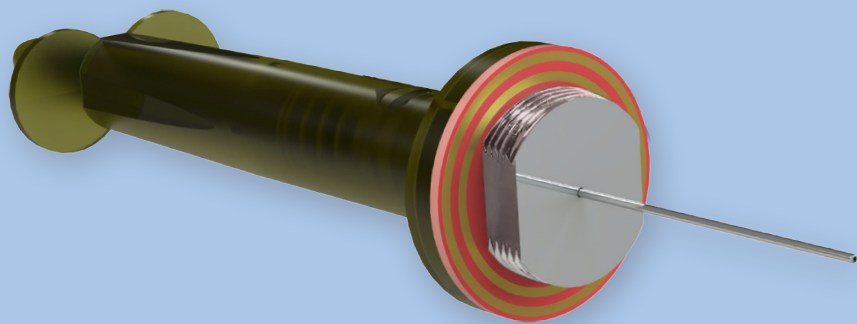


Sample Collection and Injection



Key Benefits

- Convenient solvent-free sample extraction
- Ideal for collecting and analyzing environmental samples in the field
- Sample collection can be accomplished in seconds

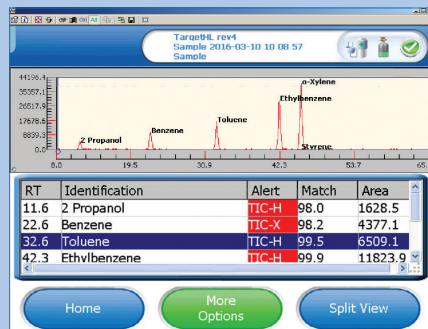
Custodion SPME Syringes for Single-handed Sample Collection and Injection

The Custodion® SPME Syringes are novel solid phase microextraction (SPME) sample collection

and injection devices used for in-field sampling and gas chromatographic (GC) injections. When used with the Torion® T-9 portable GC/MS system, the Custodion syringes are a quick, easy and reliable way to collect and analyze complex samples in the field.

SPME Technology

SPME is a solvent-free extraction technique that combines extraction, collection and concentration of analytes present in gas, liquid and dissolved solid samples. The SPME fiber within the Custodion syringes contains a coating that removes and traps chemical compounds from the sample matrix by adsorption. SPME technology provides the user with quick and convenient sampling and concentration in a single step. After sample collection, the SPME fiber is inserted directly into the heated injection port of the Torion portable T-9 GC/MS for thermal desorption, separation and detection.



QUICK

Target analytes in air, headspace, liquid or dissolved solid samples are quickly trapped by the active coated surface of the SPME fiber, which is mounted inside an easy-to-operate syringe holder.

EASY

The Custodian SPME Syringes are designed for easy single-handed operation in protective gloves. The push button trigger is color-coded for easy viewing of the SPME fiber position. Sample collection is easily accomplished by exposing the SPME fiber to the sample for as little as a few seconds.

RELIABLE

The Custodian SPME Syringes allow you to consistently extract and trap target compounds from complex samples in any location or general conditions. Once target compounds are trapped on the SPME fiber, they are protected by the syringe needle and cap ensuring sample integrity for confident analysis in the field.

Syringe Operation and Use

The Custodian SPME Syringes are made of hardened plastic for robust, durable operation. The push-button trigger mechanism on top of the syringe body is easy to use, and extends the fiber for sampling and sample injection or retracts the fiber for protection between sampling and injection. The push-

button is color-coded for easy viewing of the SPME fiber position. The SPME syringe needle and fiber containing the collected analytes can be protected during transport and storage using the unique screw-on/off cap. The Custodian syringes are as easy to use as a ballpoint pen.

Product Specifications

Physical Specifications:

Syringe Length	7.2 in or 18.3 cm
Hand Grip Length	4.0 in or 10.2 cm
Diameter	1.375 in or 3.5 cm (widest)
Weight	1.8 ounces (50 grams)
Fiber Thickness	4.0 in or 10.2 cm
Fiber Length	Active sample collection surface of SPME fiber - 2 cm
Barrel Gauge	19 gauge

Available SPME Phases

Divinylbenzene/Polydimethylsiloxane (DVB/PDMS) 65 µm df

Available Syringe Tips

Blunt tip for use with Merlin® microseal



PerkinElmer, Inc.
940 Winter Street
Waltham, MA 02451 USA
P: (800) 762-4000 or
(+1) 203-925-4602
www.perkinelmer.com



For a complete listing of our global offices, visit www.perkinelmer.com/ContactUs

Copyright © 2016, PerkinElmer, Inc. All rights reserved. PerkinElmer® is a registered trademark of PerkinElmer, Inc. All other trademarks are the property of their respective owners.