

## GC-MS Method for Organic Contaminants in Soil INTEGRATES Sample Prep



When screening and/or confirming organic contaminants in your environmental samples, unstoppable productivity is the ideal solution. Lab productivity is dependent upon system reliability, efficiency and integration from sample preparation through to data analysis.

A Dionex™ ASE™ 350 plus the Rocket™ Evaporator for automated sample preparation, combined with the proven analytical capabilities of our Thermo Scientific ISQ single quadrupole GC-MS, comprise an integrated workflow that delivers increased productivity and sample throughput — a green solution with less solvent usage and waste at a lower cost per sample.

The Dionex ASE 350 for rapid and complete extraction brings proven and validated technology to sample preparation. The Dionex ASE 350 provides true walk-away automation for unattended operation and high productivity to any laboratory. The flow-through operation allows for the use of adsorbents that can produce extracts essentially free from interferences. The temperature and pressure conditions enable sample extractions in less than 15 minutes each on average with 90% less solvent than traditional methods.

### Thermo Scientific Dionex ASE 350 Accelerated Solvent Extractor and Rocket Evaporator

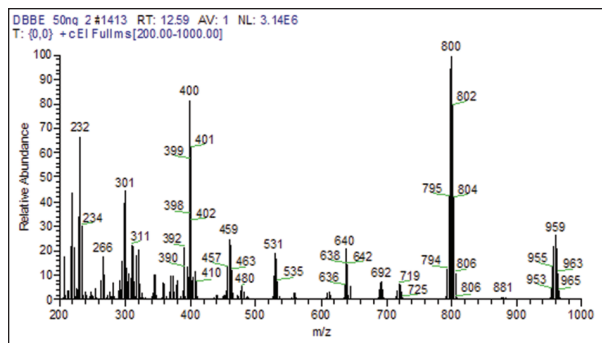
- Automatically extract up to 24 samples (1–100 grams each)
- Faster than Soxhlet, sonication, and other extraction methods
- Requires less solvent and labor
- Evaporate to dry samples completely, or concentrate to a small volume
- High levels of solvent recovery, even with volatile organic solvents

### Thermo Scientific ISQ Single Quadrupole GC-MS

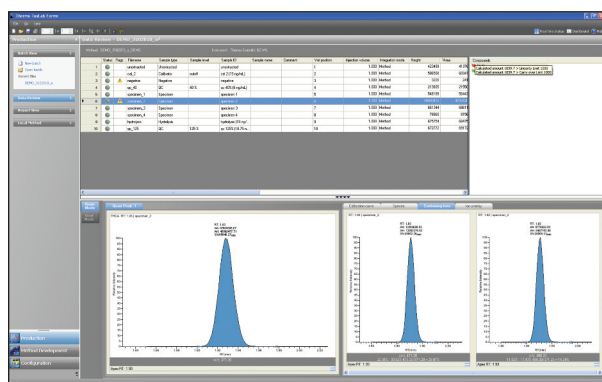
- Extend instrument uptime with unique Full Source Removal for continuous day-in, day-out operation
- Improve sample throughput using fast data acquisition rates
- Extended mass range for analytical versatility
- Comprehensive Full Scan/SIM for screening and confirmation in the same analysis

#### Did you know?

When you buy a product from Thermo Fisher Scientific, you gain the peace of mind that comes from being backed by the largest team of highly qualified service experts committed to your long-term success. We provide a complete portfolio of services and management solutions designed to help you improve productivity and reduce total cost throughout your equipment lifecycle. In addition to services related to a single instrument, **we offer programs to service and maintain multiple instruments, regardless of manufacturer**, that will deliver significant cost savings. Let our expertise complement yours.



Wide mass range covers broad application needs



EnviroLab Forms data review

The Rocket Evaporator is a vacuum-based centrifuge evaporator that can concentrate samples automatically and recover 95% or greater of the evaporated solvent. In addition, SampleGenie® enables samples to be concentrated or dried directly into the storage or autosampler vial without the need for manual transfers or graduated washing steps. SampleGenie saves time and eliminates handling errors. In effect, it achieves sample transfer automation, but without the robotics.

Transferring your environmental samples to the ISQ™ single quadrupole GC-MS for analysis now means using a new source design that lets your system stay cleaner longer. With heat throughout the ion optics, the system can analyze more samples per day with maximum uptime. And the broad dynamic range accommodates concentration variations from sample to sample with ease. When it comes to analyzing your data, Thermo Scientific EnviroLab Forms software handles the sample throughput and stringent quality control requirements of the environmental lab.

### Common Applications

- Organic contaminants (OCPs) in soil, sediments and soil sample matrices
- US EPA Methods 3545A, 8270D, 8081

### GC-MS Organic Contaminants in Soil Solution

Fully integrated workflow from sample prep to results in a comprehensive, value-priced package:

- Dionex ASE 350
- Rocket Evaporator with SampleGenie
- Thermo Scientific TRACE GC Ultra with ECD or ISQ single quadrupole GC-MS with Thermo Scientific AS 3000 II or TriPlus autosampler
- EnviroLab™ Forms software
- Single source for consumables, parts, upgrades, service and technical support

For product specifications, application notes and more, please visit [www.thermoscientific.com](http://www.thermoscientific.com), [www.thermoscientific.com/dionex](http://www.thermoscientific.com/dionex) or email us at [analyze@thermofisher.com](mailto:analyze@thermofisher.com)

©2011 Thermo Fisher Scientific Inc. All rights reserved. Rocket is a trademark and SampleGenie is a registered trademark of Genevac Ltd. All other trademarks are the property of Thermo Fisher Scientific Inc. and its subsidiaries. Specifications, terms and pricing are subject to change. Not all products are available in all countries. Please consult your local sales representative for details.

### Did you know?

We offer financing and leasing options tailored to meet your budgetary requirements. Acquire your technology solution today and let us help you conserve cash, leverage tax incentives or protect against equipment obsolescence. Ask for details about our Financial Services.