

How to Convert from Packed to Capillary GC Columns!

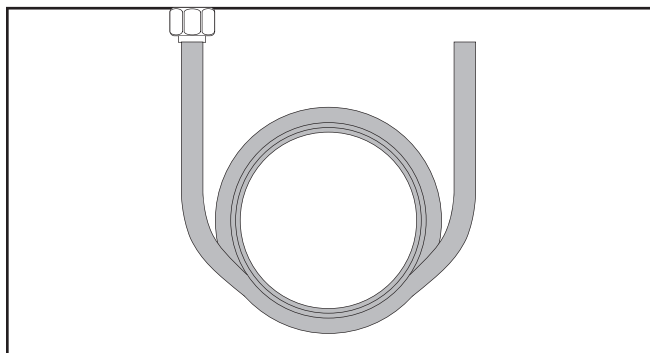
Sky Countryman, GC Product Manager
Phenomenex Inc., Torrance, CA, USA

If you're still wondering why you should convert to a high efficiency capillary GC system, consider these three reasons:

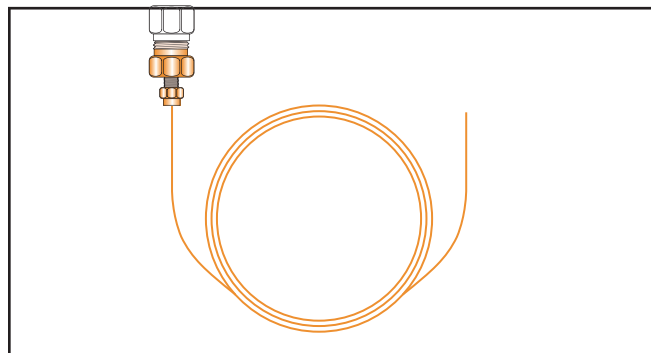
- 1 EASY . . .**
Takes less than 30min!
- 2 AFFORDABLE . . .**
Costs less than \$100
- 3 BETTER RESULTS . . .**
Faster, better resolution, improved results.

See how simple it is!

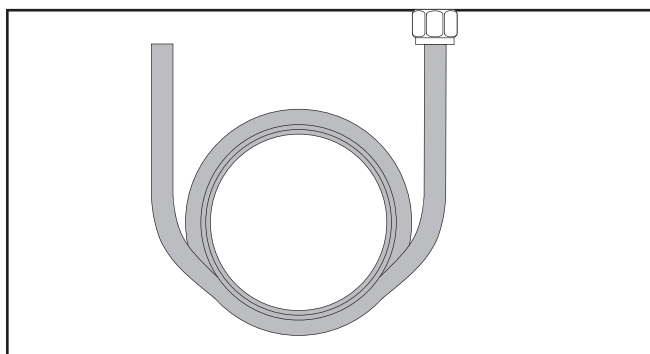
Packed Inlet



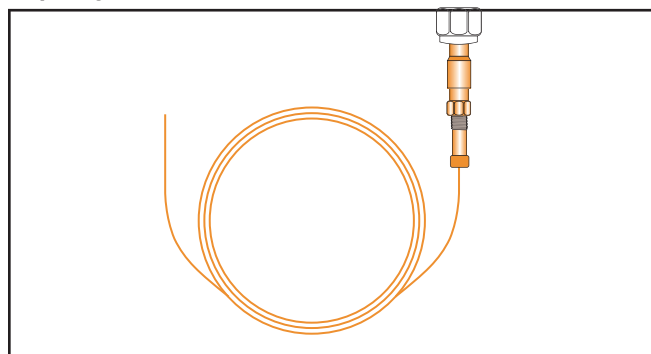
Capillary Inlet*



Packed Detector



Capillary Detector*



* Parts necessary for capillary conversion are those shown in orange. Conversions kits are available for all major GC brands.



www.phenomenex.com
Phenomenex products are available worldwide. For the distributor in your country,
contact Phenomenex USA, International Department by telephone, fax or e-mail: international@phenomenex.com.

phenomenex[®]
...breaking with traditionSM

| | | | | | | | |
|--|--|---|---|---|---|--|--|
| <p>USA tel.: (310) 212-0555 fax: (310) 328-7768 email: info@phenomenex.com</p> | <p>Puerto Rico (800) 541-HPLC (310) 328-7768 info@phenomenex.com</p> | <p>Canada (800) 543-3681 (310) 328-7768 info@phenomenex.com</p> | <p>France 01 30 09 21 10 01 30 09 21 11 franceinfo@phenomenex.com</p> | <p>United Kingdom 01625-501367 01625-501796 ukinfo@phenomenex.com</p> | <p>Germany 06021-58830-0 06021-58830-11 anfrage@phenomenex.com</p> | <p>New Zealand 09-4780951 09-4780952 info@phenomenex.co.nz</p> | <p>Australia 02-9428-6444 02-9428-6445 info@phenomenex.com.au</p> |
|--|--|---|---|---|---|--|--|

Benefits of Capillary Vs. Packed Columns

1. Better Resolution:

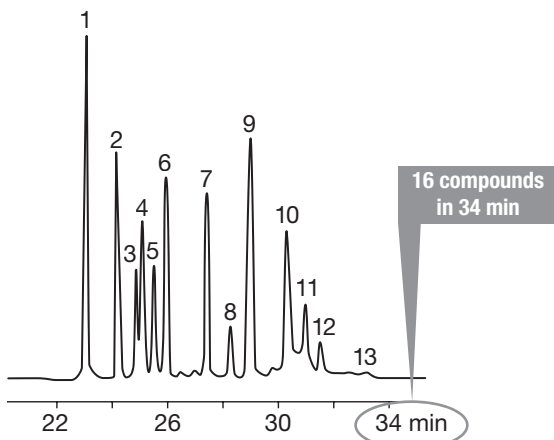
- Packed GC ~ 1,800-3,600 plates/column
- Capillary GC ~58,500 - 234,000 plates/column

2. Faster Analysis

3. Lower Bleed

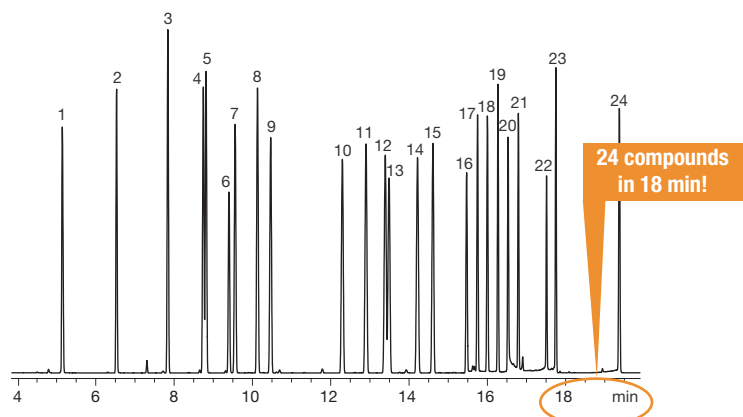
4. Better Reproducibility

2meter x 2mm ID Glass Packed Column



1. α -BHC
2. γ -BHC
3. β -BHC
4. Heptachlor
5. δ -BHC
6. Aldrin
7. Heptachlorepoxyde
8. Endosulfan I
9. Dieldrin/4,4'-DDE
10. Endrin
11. Endosulfan II/4,4'-DDD
12. 4,4'-DDT
13. Endosulfan sulfate/Endrin aldehyde

30 meter x 0.25mm ID x 0.25 μ m Capillary Column APP ID 15785



1. 1-Bromo-2-Nitrobenzene (IS)
2. Tetrachlorometaxylene (surr)
3. α -BHC
4. Pentachloronitrobenzene (surr)
5. γ -BHC
6. β -BHC
7. Heptachlor
8. δ -BHC
9. Aldrin
10. Heptachlor Epoxide
11. γ -Chlordane
12. α -Chlordane
13. Endosulfan I
14. DDE
15. Dieldrin
16. Endrin
17. DDD
18. Endosulfan II
19. DDT
20. Endrin Aldehyde
21. Endosulfan Sulfate
22. Methoxychlor
23. Endrin Ketone
24. Decachlorobiphenyl (IS)

For more information about the benefits of using capillary GC columns or to find out what you need to convert your system to use capillary columns, please contact your local Phenomenex representative.