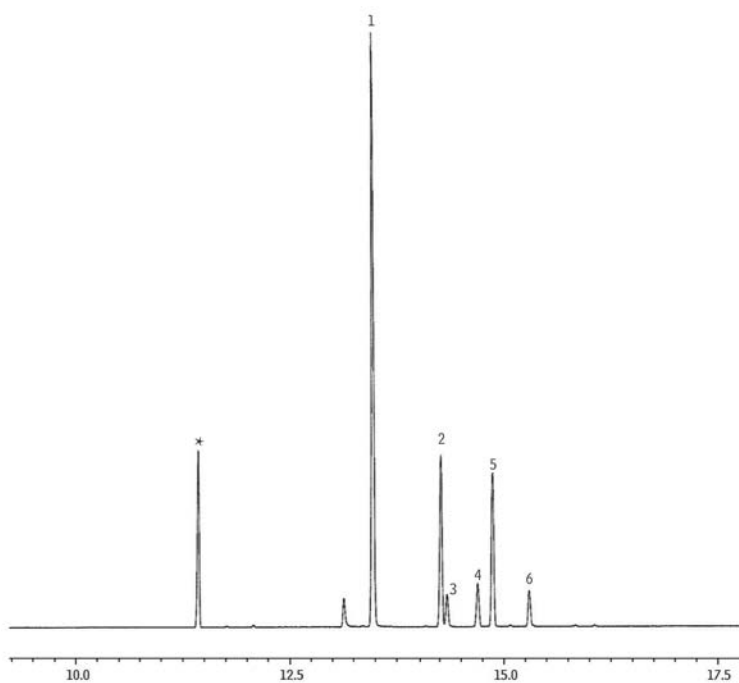


## Extracted Opiates from Blood on Rxi®-5Sil MS



GC\_CF1150

### Peaks

1. Hydrocodone
  2. Codeine
  3. Oxycodone
  4. Hydromorphone
  5. 6-Monoacetylmorphine
  6. Morphine
- \* Matrix

**Column** Rxi®-5Sil MS, 30 m, 0.25 mm ID, 0.25  $\mu$ m (cat.# 13623)

### Sample

Diluent: Ethyl acetate  
Conc.: 100 ng/mL propionic anhydride derivatives

### Injection

Inj. Vol.: 1  $\mu$ L splitless (hold 1 min.)  
Liner: Gooseneck Splitless (4mm) w/Wool (cat.# 22405)  
Inj. Temp.: 250 °C  
Purge Flow: 100 mL/min.

### Oven

Oven Temp: 65 °C (hold 1 min.) to 315 °C at 15 °C/min.

### Carrier Gas

Carrier Gas: He, constant flow

Flow Rate: 1 mL/min.

Linear Velocity: 35 cm/sec. @ 65 °C

### Detector

Detector: MS

Mode: SIM

Transfer Line

Temp.: 250 °C

Analyzer Type: Quadrupole

Solvent Delay

Time: 7 min.

Tune Type: PFTBA

Ionization Mode: EI

### Notes

Opiates were spiked into a blood sample and extracted by SPE, then derivatized with propionic anhydride.

**Acknowledgement** Data courtesy of Miami Dade County Medical Examiner Department

Restek Corporation 110 Benner Circle Bellefonte, PA 16823  
814-353-1300 • 800-356-1688 • Fax: 814-353-1309 • www.restek.com