

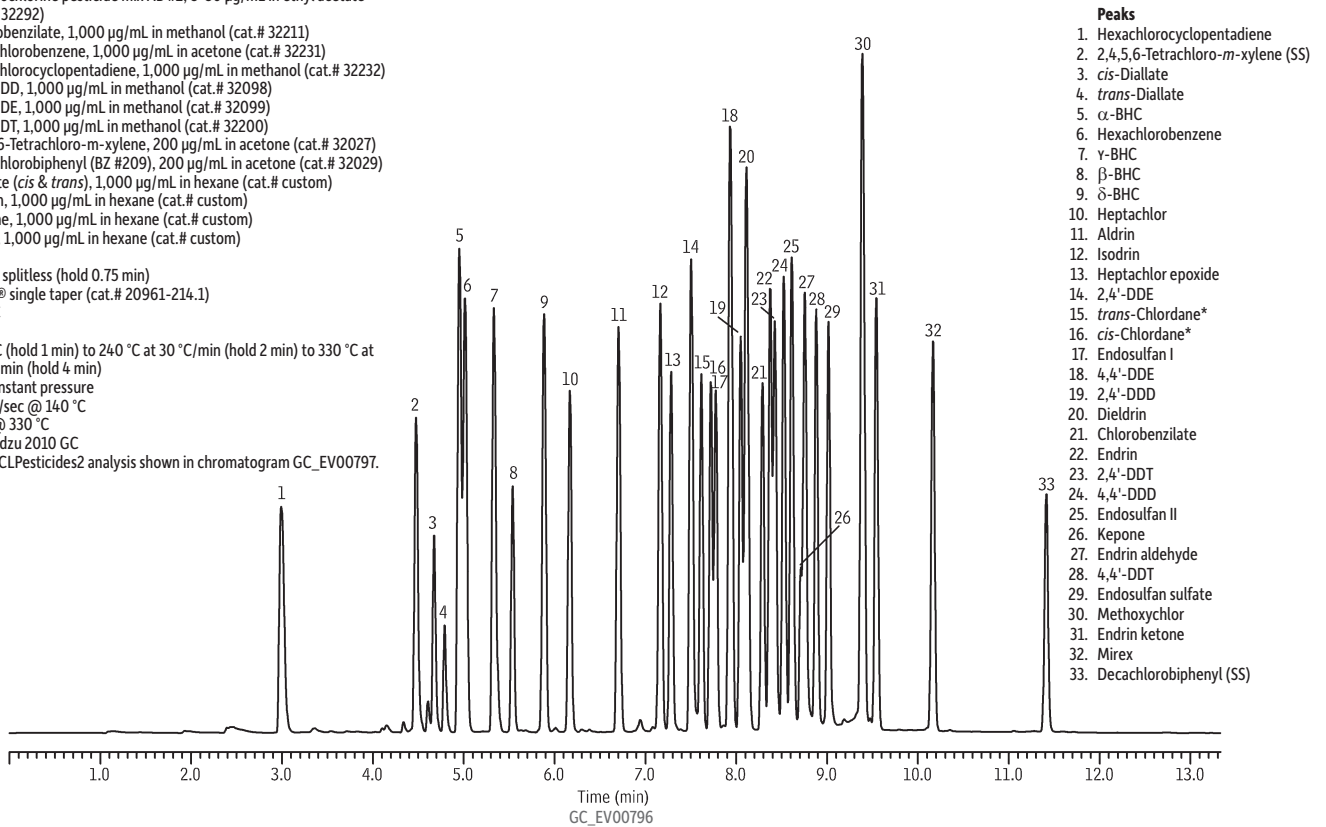
## Organochlorine Pesticides by EPA Method 8081A on Rtx®-440 (dual column w/ Rtx®-CLPesticides2)

**Column** Rtx®-440, 30 m, 0.32 mm ID, 0.50 µm (cat.# 12939)  
**Sample** Organochlorine pesticide mix AB #2, 8-80 µg/mL in ethyl acetate (cat.# 32292)  
 Chlorobenzilate, 1,000 µg/mL in methanol (cat.# 32211)  
 Hexachlorobenzene, 1,000 µg/mL in acetone (cat.# 32231)  
 Hexachlorocyclopentadiene, 1,000 µg/mL in methanol (cat.# 32232)  
 2,4'-DDD, 1,000 µg/mL in methanol (cat.# 32098)  
 2,4'-DDE, 1,000 µg/mL in methanol (cat.# 32099)  
 2,4'-DDT, 1,000 µg/mL in methanol (cat.# 32200)  
 2,4,5,6-Tetrachloro-*m*-xylene, 200 µg/mL in acetone (cat.# 32027)  
 Decachlorobiphenyl (BZ #209), 200 µg/mL in acetone (cat.# 32029)  
 Diallylate (*cis* & *trans*), 1,000 µg/mL in hexane (cat.# custom)  
 Isodrin, 1,000 µg/mL in hexane (cat.# custom)  
 Kepone, 1,000 µg/mL in hexane (cat.# custom)  
 Mirex, 1,000 µg/mL in hexane (cat.# custom)

**Injection**  
 Inj. Vol.: 1.0 µL splitless (hold 0.75 min)  
 Liner: Siltek® single taper (cat.# 20961-214.1)  
 Inj. Temp.: 275 °C  
**Oven**  
 Oven Temp.: 140 °C (hold 1 min) to 240 °C at 30 °C/min (hold 2 min) to 330 °C at 30 °C/min (hold 4 min)

**Carrier Gas** Hz, constant pressure  
 Linear Velocity: 51 cm/sec @ 140 °C  
**Detector** ECD @ 330 °C  
**Instrument** Shimadzu 2010 GC  
**Notes** Rtx®-CLPesticides2 analysis shown in chromatogram GC\_EV00797.

\* For information regarding the nomenclature used for *cis*-chlordane and *trans*-chlordane, visit [www.restek.com/chlordane-notice](http://www.restek.com/chlordane-notice)



Restek Corporation 110 Benner Circle Bellefonte, PA 16823  
 1-814-353-1300 • 1-800-356-1688 • Fax: 1-814-353-1309 • [www.restek.com](http://www.restek.com)