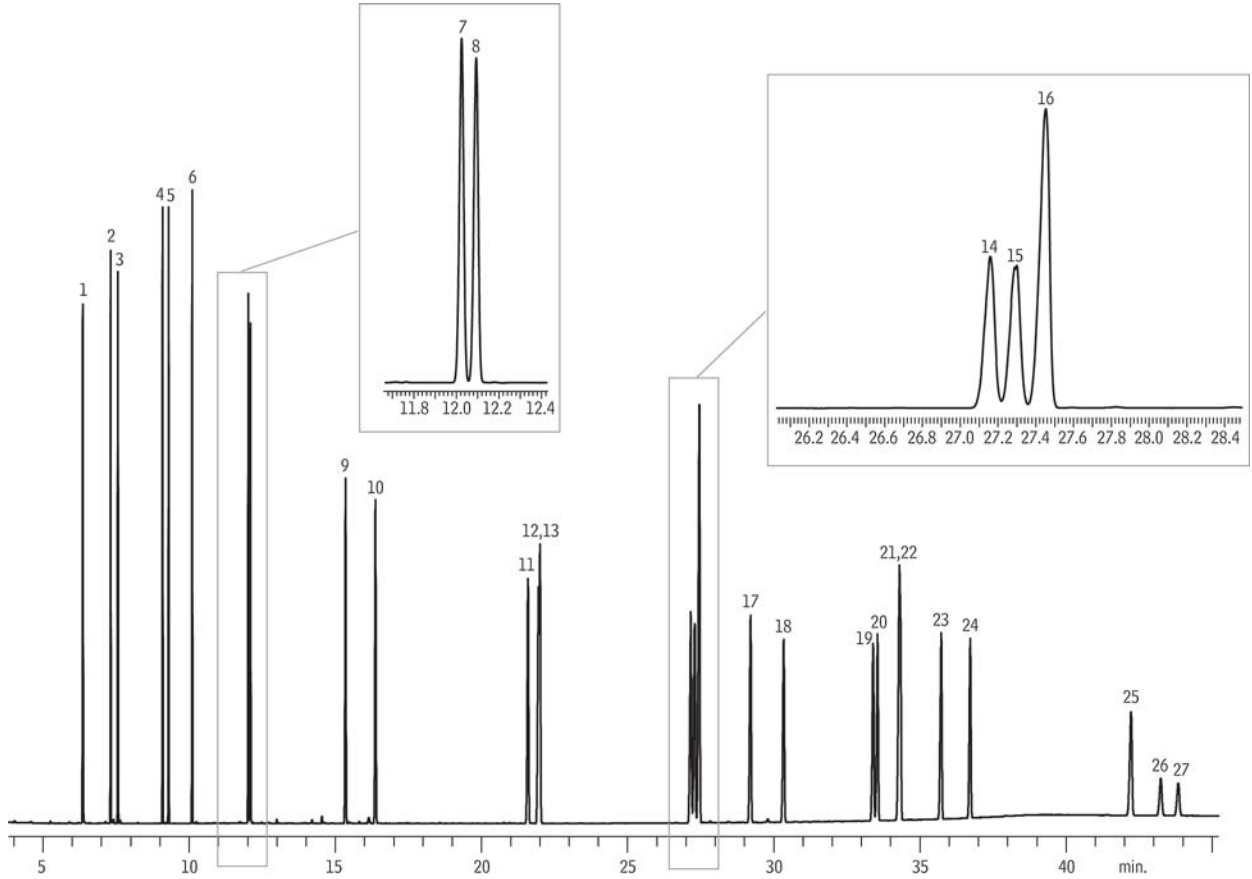


Polycyclic Aromatic Hydrocarbons
US EPA Method 8100
Rxi®-17Sil MS



GC_EV1160

1. Naphthalene
2. 2-Methylnaphthalene
3. 1-Methylnaphthalene
4. Acenaphthylene
5. Acenaphthene
6. Fluorene
7. Phenanthrene
8. Anthracene
9. Fluoranthene
10. Pyrene
11. Benz[*a*]anthracene
12. Chrysene
13. Triphenylene
14. Benzo[*b*]fluoranthene

15. Benzo[*k*]fluoranthene
16. Benzo[*j*]fluoranthene
17. Benzo[*a*]pyrene
18. 3-Methylcholanthrene
19. Dibenzo[*a,h*]acridine
20. Dibenzo[*a,j*]acridine
21. Indeno[1,2,3-*cd*]pyrene
22. Dibenzo[*a,h*]anthracene
23. Benzo[*ghi*]perylene
24. 7H-Dibenzo[*c,g*]carbazole
25. Dibenzo[*a,e*]pyrene
26. Dibenzo[*a,i*]pyrene
27. Dibenzo[*a,h*]pyrene

Column
 Sample
 Diluent:
 Conc.:
 Injection
 Inj. Vol.:
 Liner:
 Inj. Temp.:
 Purge Flow:
 Oven
 Oven Temp:
 Carrier Gas
 Flow Rate:
 Detector
 Instrument

Rxi®-17Sil MS, 30 m, 0.25 mm ID, 0.25 µm (cat.# 14123)
 PAH Supplement Mix for Method 8100 (cat.# 31857)
 EPA Method 8310 PAH mixture (cat.# 31841)
 Triphenylene (custom)
 Dichloromethane
 10 ppm

0.5 µL splitless (hold 1.75 min)
 Auto SYS XL PSS split/splitless w/wool (cat.# 21718)
 320 °C
 75 mL/min

65 °C (hold 0.5 min) to 220 °C at 15 °C/min to 330 °C at 4 °C/min (hold 15 min)
 He, constant flow
 2.0 mL/min
 FID @ 320 °C
 PE Clarus 600 GC