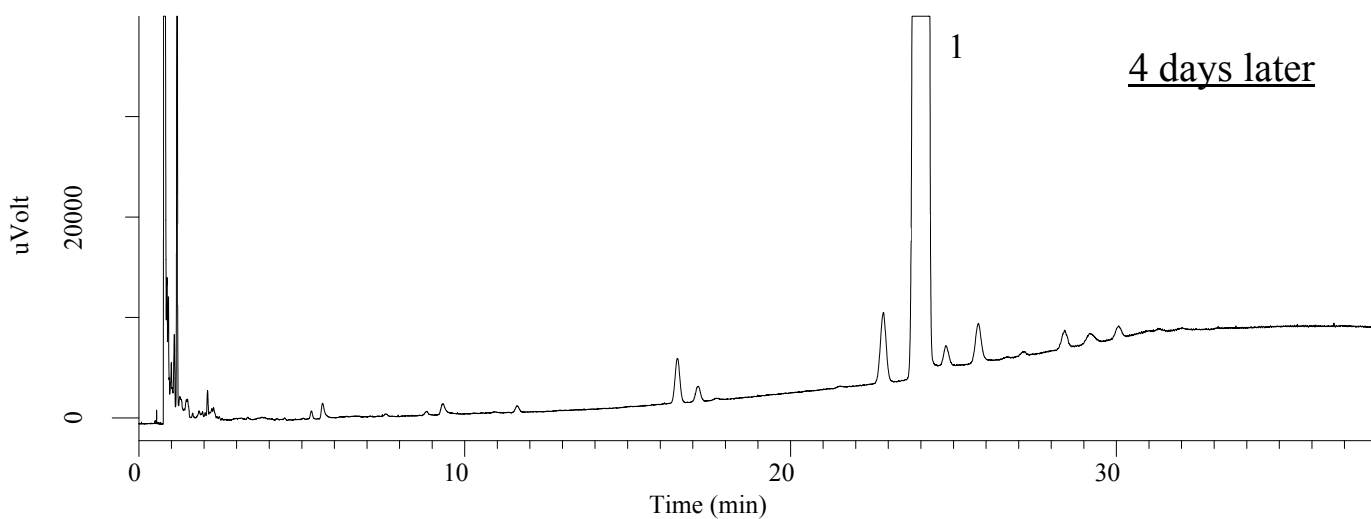
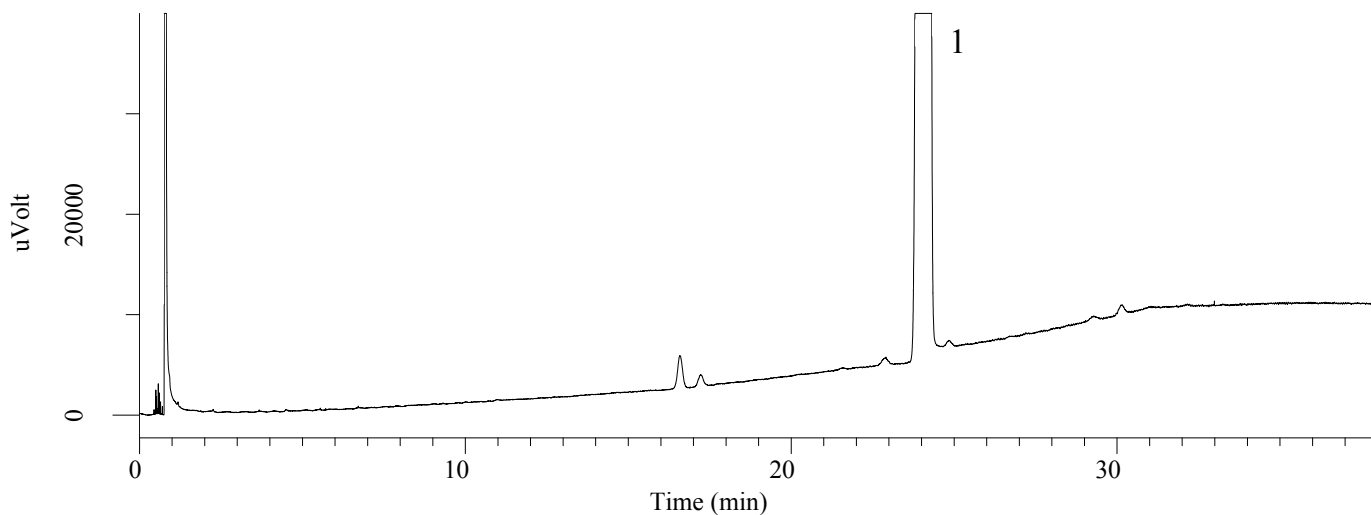


# InertSearch™ for GC

InertCap® Applications

## Analysis of Sertraline Hydrochloride (Under the Condition of European Pharmacopoeia 7.0)

Data No. GA245-0644



### Conditions

**System** : GC-FID  
**Column** : InertCap 17  
0.53 mm I.D. x 30 m df = 1.00 µm  
**Col. Cat. No.** : 1010-65445  
**Col. Temp.** : 200 °C (1 min hold) - 2 °C/min  
- 260 °C (7 min hold)  
**Carrier Gas** : He 75 kPa  
**Injection** : Split flow 90 mL/min  
250 °C  
**Detection** : FID Range 10<sup>0</sup>  
280 °C  
**Sample Size** : 1 µL  
**Sample** : Standard

### Analyte :

1. Sertraline hydrochloride 25 mg/mL

### Relative retention :

Sertraline (retention time = about 24 min)