

Product Information

Alumina GC PLOT Capillary Columns

Supelco PLOT Columns

Supelco PLOT columns are an ideal choice for many permanent gas and light hydrocarbon analyses in the petrochemical/chemical industry. Supelco PLOT columns are individually tested for efficiency, inertness, and retention. Each column is shipped with a chromatogram demonstrating the column performance that can be expected.

Activated Alumina PLOT Columns

Activated alumina PLOT columns are prepared using submicron, granular activated alumina (aluminum oxide) particles possess a high degree of porosity. Either sodium sulfate or potassium chloride is used as a surface-deactivating agent. Sodium sulfate is used as a deactivant to reduce peak tailing, thereby enhancing peak shape. Sodium sulfate also provides enhanced stability of

the alumina to water. The surface chemistry of the sulfate deactivated PLOT columns generally allows for the elution of a given carbon number. A combination of surface and porosity effects allow for the separation of methane from C2 hydrocarbons. Of particular interest and importance to petroleum analysts is the elution of acetylene after n-butane and the elution of methyl acetylene after n-pentane and 1,3-butadiene.

The selectivity of potassium chloride deactivated alumina PLOT columns also allows for the elution of the unsaturated hydrocarbons after the saturated hydrocarbons of a given carbon number; but the polarity is less than the sodium sulfate deactivated alumina PLOT columns. This is most obvious in the elution of acetylene after propane and propylene but before n-butane. The chloride deactivated alumina PLOT columns also provide excellent separation for many common Freon® compounds.

Figure A. 18 Component Hydrocarbon Mix on Alumina Sulfate PLOT Column

Column: Alumina sulfate PLOT, 50m x 0.53mm ID
 Cat. No.: 28324-U
 Oven: 35°C (2.5 min) to 150°C @ 5°C/min (4.5 min)
 Inj.: 200°C
 Det.: FID, 230°C
 Flow: Helium, 3.05mL/min @ 35°C
 Injection: 10µL direct valve inlet
 Valve: 150°C
 Sample: 18 components in nitrogen (bulk) at 25ng each on column

- | | |
|-----------------|----------------------|
| 1. Methane | 10. Acetylene |
| 2. Ethane | 11. trans-2-Butene |
| 3. Ethylene | 12. 1-Butene |
| 4. Propane | 13. Isobutylene |
| 5. Cyclopropane | 14. cis-2-Butene |
| 6. Propylene | 15. Isopentane |
| 7. Isobutane | 16. n-Pentane |
| 8. n-Butane | 17. 1,3-Butadiene |
| 9. Propadiene | 18. Methyl acetylene |

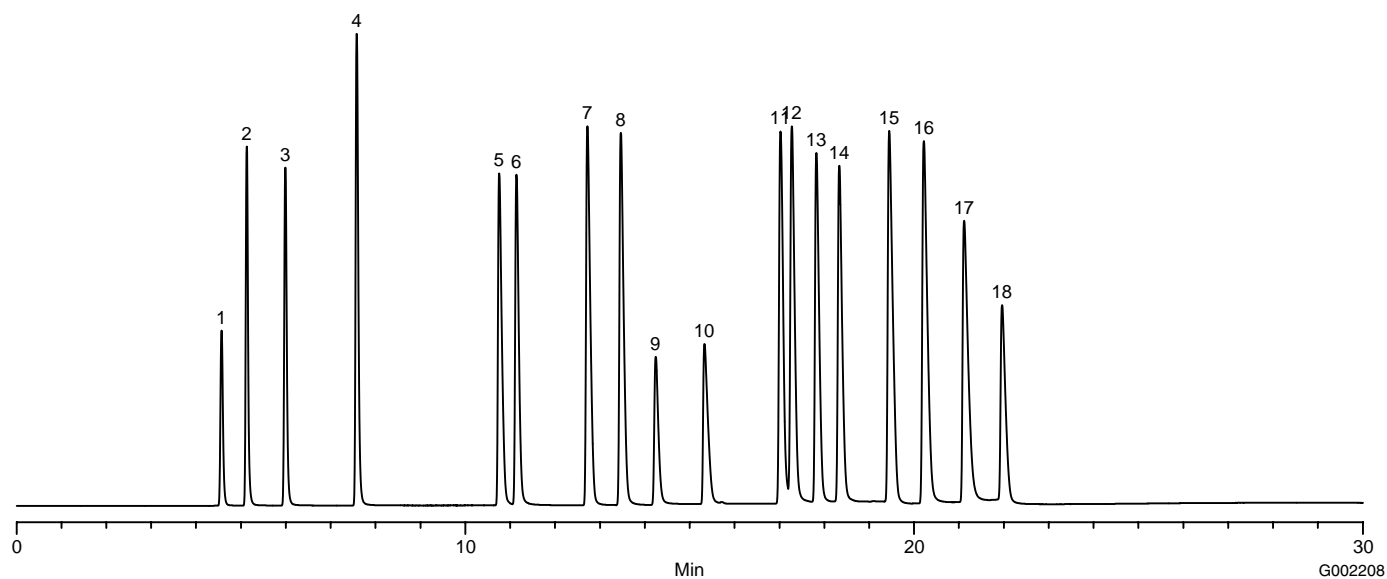
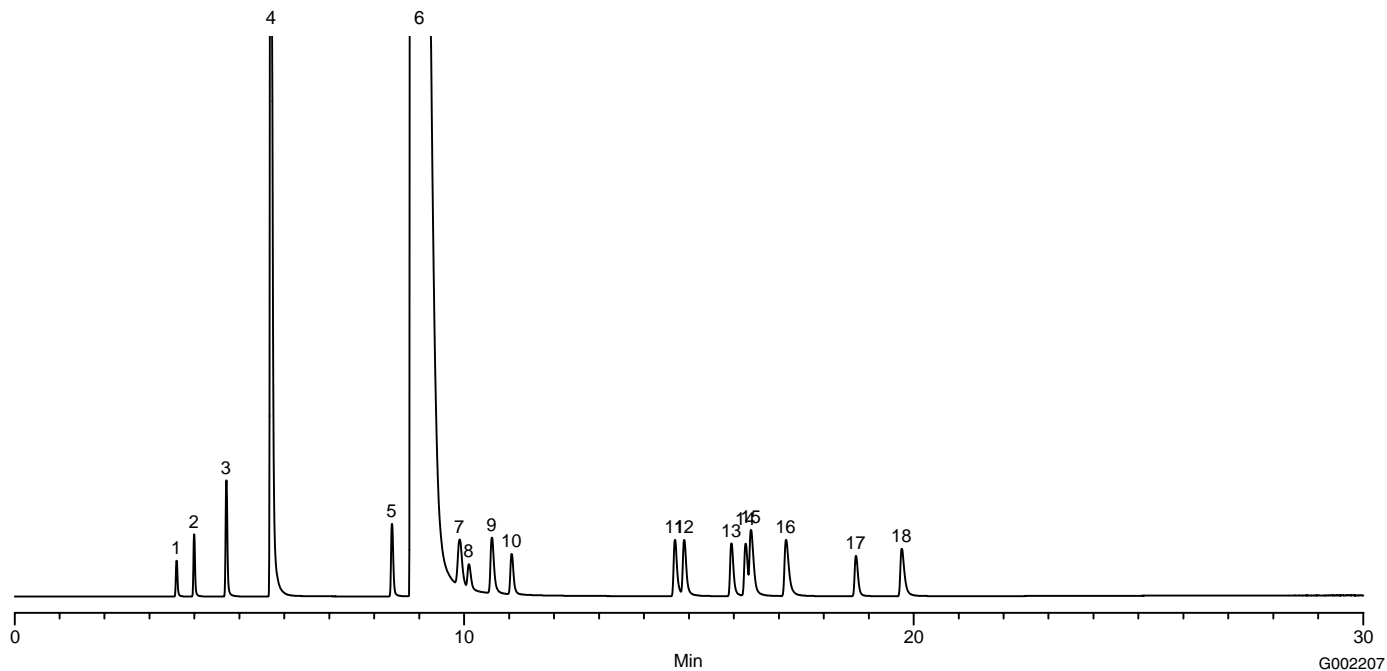


Figure B. Trace Impurities on Alumina Chloride PLOT Column

Column: Alumina chloride PLOT, 50m x 0.53mm ID
 Cat. No.: 28329-U
 Oven: 35°C (2.5 min) to 150°C @ 5°C/min (4.5 min)
 Inj.: 200°C
 Det.: FID, 230°C
 Flow: Helium, 3.0mL/min @ 35°C
 Injection: 10µL direct valve inlet
 Valve: 150°C
 Sample: Propylene at approximately 95.0%

1. Methane
 2. Ethane
 3. Ethylene
 4. Propane
 5. Cyclopropane
 6. Propylene
 7. Isobutene
 8. Acetylene
 9. n-Butane
 10. Propadiene
 11. trans-2-Butene
 12. 1-Butene
 13. Isobutylene
 14. Cis-2-Butene
 15. Isopentane
 16. n-Pentane
 17. Propyne
 18. 1,3-Butadiene



Ordering Information:

Alumina Chloride

Dimension	Max. Temp.	Cat. No.
30m x 0.32mm ID	180°C	28326-U
50m x 0.32mm ID	180°C	28327-U
30m x 0.53mm ID	180°C	28328-U
50m x 0.53mm ID	180°C	28329-U

Alumina Sulfate

Dimension	Max. Temp.	Cat. No.
30m x 0.32mm ID	180°C	28321-U
50m x 0.32mm ID	180°C	28322-U
30m x 0.53mm ID	180°C	28323-U
50m x 0.53mm ID	180°C	28324-U

Trademark

Freon - E.I. du Pont de Nemours & Co., Inc.

For expert answers to your questions contact our Technical Service Department:

Phone **800-359-3041, 814-359-3041**

Fax **800-359-3044, 814-359-5468**

E-mail **techservice@sial.com**

To download Supelco's free technical literature visit us at **sigma-aldrich.com/supelco-literature**

sigma-aldrich.com/supelco

Order/Customer Service 800-247-6628, 800-325-3010 • Fax 800-325-5052 • E-mail supelco@sial.com

Technical Service 800-359-3041, 814-359-3041 • Fax 800-359-3044, 814-359-5468 • E-mail techservice@sial.com

SUPELCO • 595 North Harrison Road, Bellefonte, PA 16823-0048 • 814-359-3441



We are committed to the success of our Customers, Employees and Shareholders through leadership in Life Science, High Technology and Service.

The SIGMA-ALDRICH Family SIGMA ALDRICH

SUPELCO

© 2003 Sigma-Aldrich Co. Printed in USA. Supelco brand products are sold through Sigma-Aldrich, Inc. Sigma-Aldrich, Inc. warrants that its products conform to the information contained in this and other Sigma-Aldrich publications. Purchaser must determine the suitability of the product(s) for their particular use. Additional terms and conditions may apply. Please see reverse side of the invoice or packing slip.



T403145
GFE