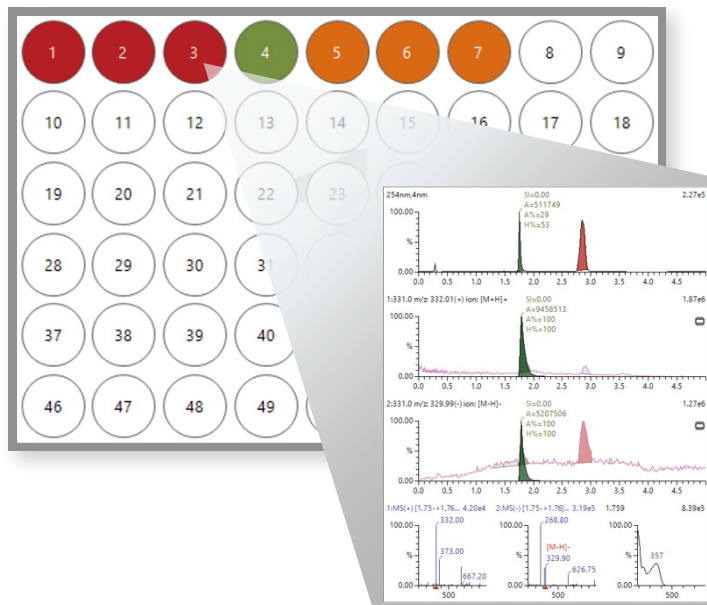


Open Access Software for LC/LC-MS

# Open Solution



# Open Access Software for LC/LC-MS

## Increased Efficiency of Data Acquisition and Analysis

In a typical laboratory, many analyses are repeatedly performed. Users need to verify their PCs can be used for data acquisition and analyses, and they need to properly manage and maintain shared instruments. Accordingly, there is a need for more efficient laboratory administration. Open Solution™ software supports LC and LC-MS analysis and fractionation, under an open access environment, in which qualitative analyses and fractionation are repeatedly implemented under several analytical conditions, with instruments shared between multiple users.

### Features of Open Solution

#### Simple and Intuitive Sample Logging and Data Review

A simple window configuration enables anyone to master the software in a short period of time.

#### Automatic Conditioning Ensures Instruments Remain in Optimal Condition

Instruments are always maintained in the optimal condition, even if they are shared by multiple users.

#### Easy Confirmation of Analysis Data

An email alerts users when data acquisition has finished, and this data can be reviewed from a remote location.

\*Note: Open Solution software also helps to streamline the analytical to preparative scale-up process. For details, refer to the Nexera™ Prep catalog (C190-E034).

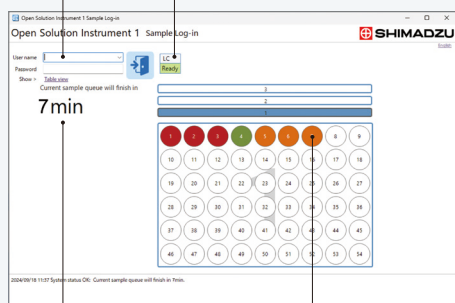
### Intuitive data acquisition



Everything from sample registration to selecting the method and performing the analysis is implemented using one window. With minimal training, anyone can use the software and easily start an analysis.

Select user and log in.

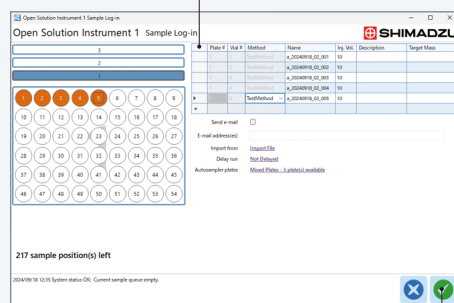
Displays instrument status.



Displays analysis time for sample queue.

Displays color-coded status of sample analysis.

Select methods and samples.



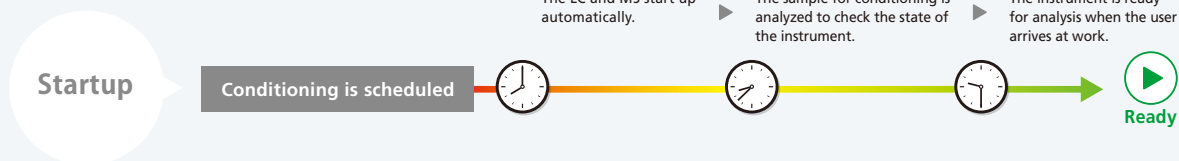
Simply click this button to start analysis.

## Automatic Conditioning

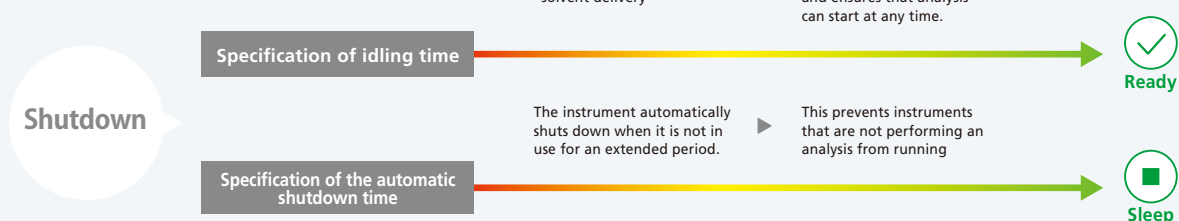


By configuring the startup settings, the instrument can be ready for data acquisition when the user arrives at work. Also, the shutdown settings can be configured to prevent the instrument from running continuously when it is not in use. In addition, a conditioning analysis can be performed automatically before each analysis, so the instrument is always maintained in the optimal condition. Configuring the settings to suit the operations can reduce laboratory operating costs.

### Every morning at a predetermined time



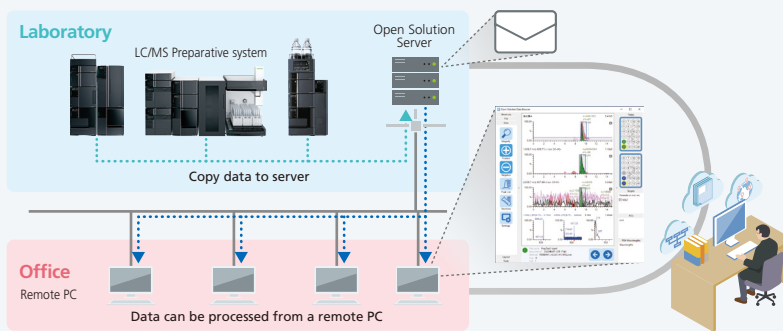
### The instrument is not used for a certain period of time



## Data Analysis from an Office



In terms of data analysis, the LC and MS results can be checked at a glance. The data displayed can be selected visually in the plate window. Additionally, when Open Solution is run on a network, the user can receive an email notification when the data acquisition has finished. Further, the user can simply click on the link in the email to check the analysis results from any PC.



Open Solution and Nexera are trademarks of Shimadzu Corporation or its affiliated companies in Japan and/or other countries.



Shimadzu Corporation  
[www.shimadzu.com/an/](http://www.shimadzu.com/an/)

**For Research Use Only. Not for use in diagnostic procedures.**

This publication may contain references to products that are not available in your country. Please contact us to check the availability of these products in your country.

Company names, products/service names and logos used in this publication are trademarks and trade names of Shimadzu Corporation, its subsidiaries or its affiliates, whether or not they are used with trademark symbol "TM" or "®".

Third-party trademarks and trade names may be used in this publication to refer to either the entities or their products/services, whether or not they are used with trademark symbol "TM" or "®".

Shimadzu disclaims any proprietary interest in trademarks and trade names other than its own.

The contents of this publication are provided to you "as is" without warranty of any kind, and are subject to change without notice. Shimadzu does not assume any responsibility or liability for any damage, whether direct or indirect, relating to the use of this publication.