



## Column Management Platform

# *iCMP*

*intelligent* Column Management Platform

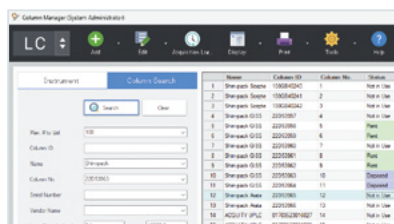
## Seamlessly Connects Columns and Analysis Data

Correctly managing the usage logs for columns is indispensable for improving the reliability of data.

By combining Column Manager (a database), a special scanner, and 2D code labels (*iCMP* tags), the intelligent Column Management Platform (*iCMP*)\*1 automatically links information on used columns and analysis reports. As a result, which columns were used, when, and by whom are clearly registered, thereby improving both usability and data reliability.

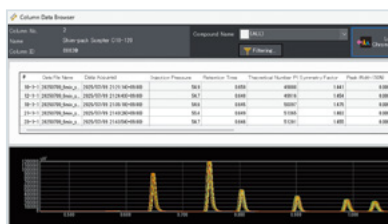
\*1 Compatible with LabSolutions™ CS

## Features of *iCMP*



### POINT 1

Integrated management of the usage status of owned columns



### POINT 2

Review column analysis logs and track performance changes



### POINT 3

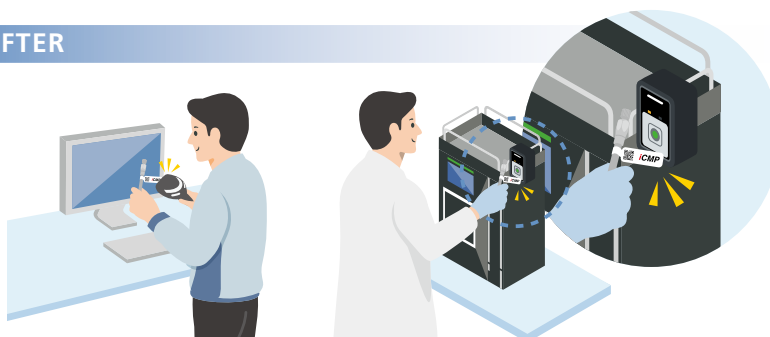
The *iCMP* tags and special scanner enable simpler, more convenient operations

## Changes in the Column Management Workflow

### BEFORE

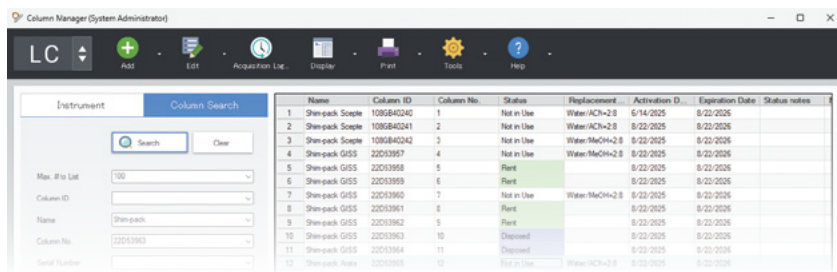


### AFTER



## POINT 1 Integrated Column Inventory Management and Usage Status

Column Manager, a special column management database, enables consolidated management of the columns used in a laboratory. The column specifications and serial numbers can be registered, and both the current users and the cumulative analysis cycles can be easily checked.

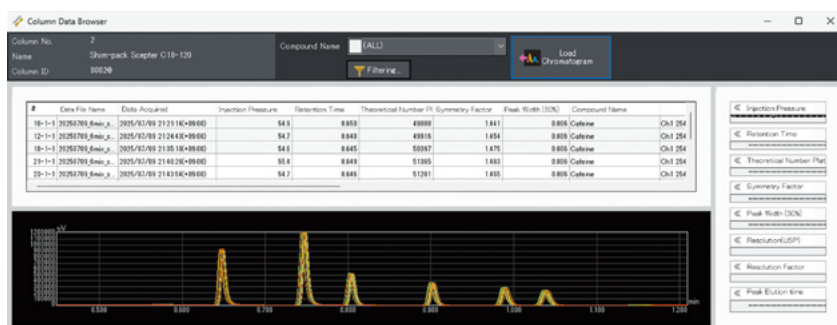


Names	Column ID	Column No.	Status	Replacement	Activation D.	Expiration Date	Status notes
1 Shim-pack Scepter	108GB40240	1	Not in Use	Water/ACN+2.0	6/14/2025	8/22/2025	
2 Shim-pack Scepter	108GB40241	2	Not in Use	Water/ACN+2.0	8/22/2025	8/22/2025	
3 Shim-pack Scepter	108GB40242	3	Not in Use	Water/MeOH+2.0	8/22/2025	8/22/2025	
4 Shim-pack GISS	220C3957	4	Not in Use	Water/MeOH+2.0	8/22/2025	8/22/2025	
5 Shim-pack GISS	220C3958	5	Rent		8/22/2025	8/22/2025	
6 Shim-pack GISS	220C3959	6	Rent		8/22/2025	8/22/2025	
7 Shim-pack GISS	220C3960	7	Not in Use	Water/MeOH+2.0	8/22/2025	8/22/2025	
8 Shim-pack GISS	220C3961	8	Rent		8/22/2025	8/22/2025	
9 Shim-pack GISS	220C3962	9	Rent		8/22/2025	8/22/2025	
10 Shim-pack GISS	220C3963	10	Disposed		8/22/2025	8/22/2025	
11 Shim-pack GISS	220C3964	11	Disposed		8/22/2025	8/22/2025	
12 Shim-pack Nova	220C3965	12	Not in Use	Water/ACN+2.0	8/22/2025	8/22/2025	



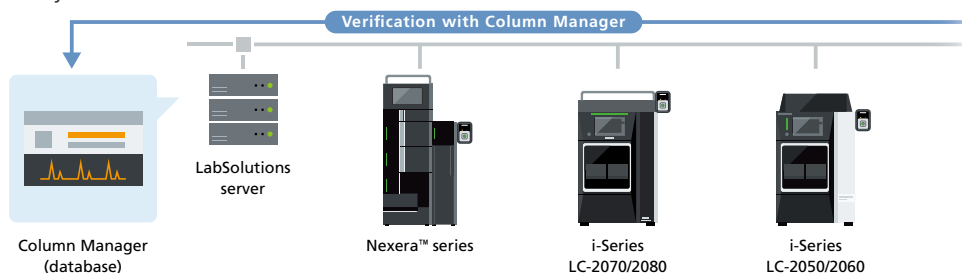
## POINT 2 Review Column Analysis Logs and Track Performance Changes

Column analysis logs can be batch displayed. In addition, the data obtained with the columns can be overlaid, making it easy to determine any changes in performance.



## POINT 3 The iCMP Tags and Special Scanner Enable Simpler, More Convenient Operations

Affixing 2D code labels (iCMP tags) to columns makes identifying columns simpler and more accurate. By connecting the special scanner to the instrument, the columns used can be identified automatically and coordinated with the Column Manager database. In addition, the system is compatible with commercially available hand scanners, allowing it to be easily incorporated into existing operating environments. This contributes to more efficient column management and more reliable analysis results.



LabSolutions and Nexera are trademarks of Shimadzu Corporation or its affiliated companies in Japan and/or other countries.



Shimadzu Corporation  
www.shimadzu.com/an/

**For Research Use Only. Not for use in diagnostic procedures.**

This publication may contain references to products that are not available in your country. Please contact us to check the availability of these products in your country.

Company names, products/service names and logos used in this publication are trademarks and trade names of Shimadzu Corporation, its subsidiaries or its affiliates, whether or not they are used with trademark symbol "TM" or "®".

Third-party trademarks and trade names may be used in this publication to refer to either the entities or their products/services, whether or not they are used with trademark symbol "TM" or "®".

Shimadzu disclaims any proprietary interest in trademarks and trade names other than its own.

The contents of this publication are provided to you "as is" without warranty of any kind, and are subject to change without notice. Shimadzu does not assume any responsibility or liability for any damage, whether direct or indirect, relating to the use of this publication.