

Experience New Benchmarks with Chromeleon™ 7 Shimadzu LC Driver for Chromeleon 7 Version 4.00

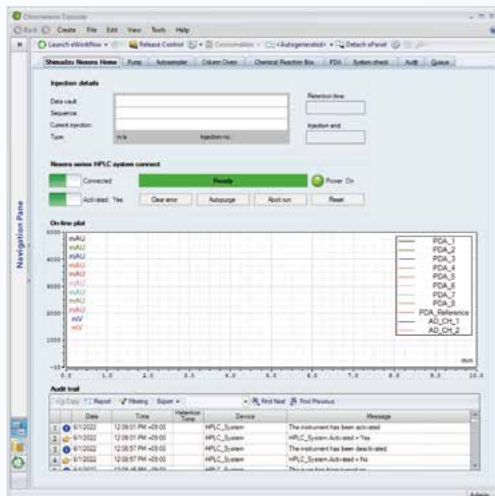


Support for Nexera IC and i-Series LC-2070/LC-2080

Now you can experience transparent control of the Nexera IC and i-Series LC-2070/LC-2080 using the Thermo Scientific™ Chromeleon Chromatography Data System.

The Nexera IC combines a compact design with excellent usability and maintainability, enabling efficient and reliable ion analysis of tap and environmental waters according to official methods.

Shimadzu LC control parameters are set through the instrument method editor embedded in Chromeleon 7 software. These parameters are stored and handled as standard Chromeleon 7 method files, meaning software can be used for daily inspections of instruments prior to an analysis and for monitoring the operating status during analyses.



ePanel



System check report

Supported Devices

Series Name	Main Units
Nexera IC	IC-150 / IC-150D / SI-150
i-Series LC-2070/LC-2080	LC-2070 / LC-2070C / LC-2070C 3D / LC-2080C / LC-2080C 3D
Nexera series	SCL-40 / LC-40D XR / SIL-40C XR / CTO-40C / SPD-40 / SPD-M40
Nexera/Prominence™	CBM-20A / LC-30AD / SIL-30A / CTO-20A / SPD-20A / SPD-M30A

* The [Nexera series] driver does not support LC systems mixed with other older components, such as the LC-30AD pump.

* The maximum number of systems controlled simultaneously with 1 Chromeleon 7 acquisition computer is as follows:

- With Chromeleon 7.3.2 or later : Up to 4 systems
(For systems with a PDA detector or an i-Series PDA model, up to 2 units can be connected.)
- With Chromeleon 7.3.1 or earlier : Up to 2 systems

* It does not support control of both a Shimadzu LC and another vendor's LC system via the same acquisition computer.



Analytical Intelligence logo, Nexera and Prominence are trademarks of Shimadzu Corporation or its affiliated companies in Japan and/or other countries. Thermo Scientific and Chromeleon are trademarks of Thermo Fisher Scientific Inc. or its affiliated entities.



Shimadzu Corporation
www.shimadzu.com/an/

For Research Use Only. Not for use in diagnostic procedures.

This publication may contain references to products that are not available in your country. Please contact us to check the availability of these products in your country.

Company names, products/service names and logos used in this publication are trademarks and trade names of Shimadzu Corporation, its subsidiaries or its affiliates, whether or not they are used with trademark symbol "TM" or "®".

Third-party trademarks and trade names may be used in this publication to refer to either the entities or their products/services, whether or not they are used with trademark symbol "TM" or "®".

Shimadzu disclaims any proprietary interest in trademarks and trade names other than its own.

The contents of this publication are provided to you "as is" without warranty of any kind, and are subject to change without notice. Shimadzu does not assume any responsibility or liability for any damage, whether direct or indirect, relating to the use of this publication.