

CoreFocus

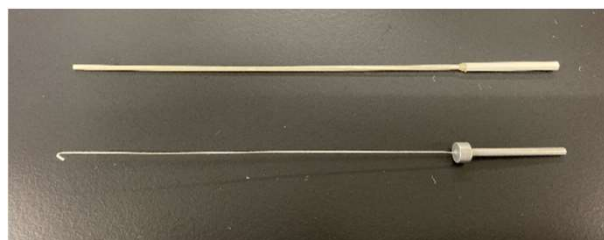
P/N : 227-35030-01

Wool fixing tool for glass inlet liners

Instruction

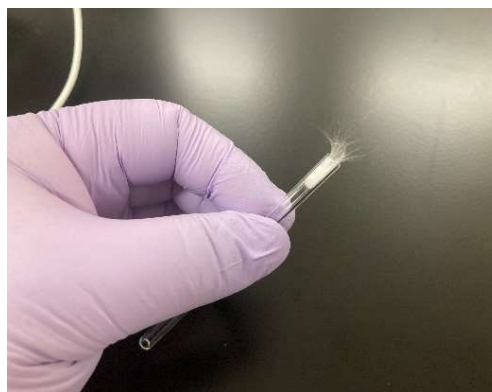
Contents

- ① Wool filling tool
- ② Wool removal tool
(May also be used to adjust the position of wool)



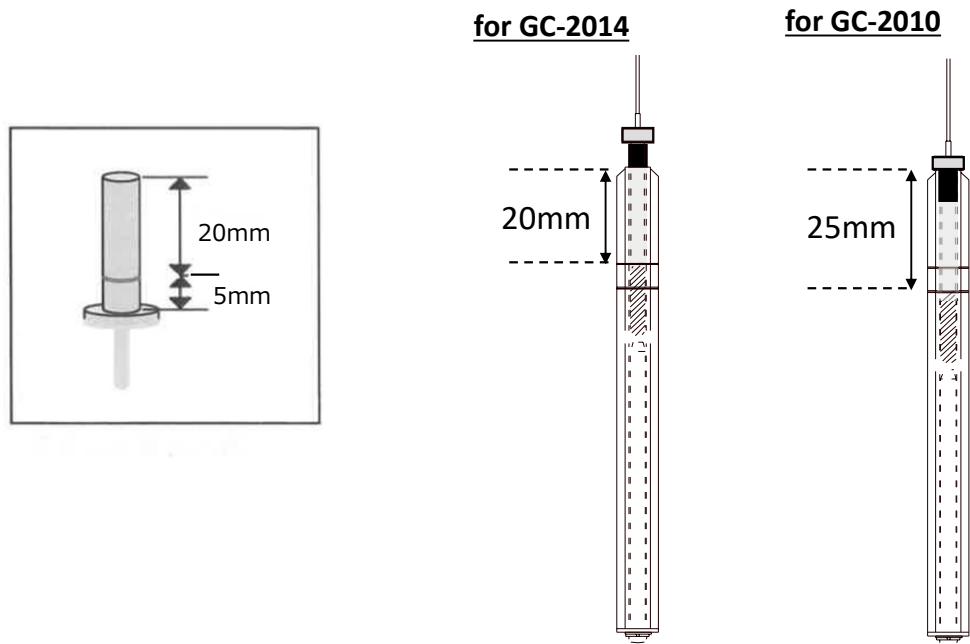
Procedure to fill wool

1. Weigh the appropriate amount of wool on a precision balance.
✘Please refer to the gas chromatograph instruction manual for the recommended amount of wool.
2. Hold the liner while wearing gloves to avoid skin contact with the glass.
3. Fill the liner with wool using tweezers.
✘There is no need to push the entire amount of wool in.



4. Pack any wool that is protruding from the liner using the handle (thicker part) of the tools.
5. Adjust the position of the wool using the tool handle. The appropriate position depends on the instrument model. Refer to the gas chromatograph instruction manual for details.
✘Ensure the upper end of the wool is flat.

【Attention】 The appropriate position of the wool depends on the instrument model. Refer to the gas chromatograph instruction manual for details.



※For GC-2030/2050, fill the liner with wool so that the upper end of the wool is 22mm from the top end of the liner. Use a ruler to determine the correct position.

Procedure to remove wool

- Extract wool with the wire part of the wool removal tool.

※Care should be taken to avoid scratching the inner surface of the glass insert.

