

Analyze Oxygenates in Gasoline and Similar Matrices, Using Single-Column Capillary GC

A single-column capillary GC analysis, using a 100 meter column, offers advantages over the currently-used two-column method for analyzing oxygenated additives in gasoline and other complex hydrocarbon mixtures. The single-column method eliminates valving, switching, and flow balancing problems, simultaneously provides information on PNA, PONA, and PIANO composition, and allows component quantification by area normalization rather than through the use of internal or external standards. Conditions for the analysis – and typical results – are described in this note.

Key Words:

- oxygenated compounds ● C1-C4 alcohols ● MTBE ● TAME
- complex hydrocarbon matrices ● gasoline ● reformat

The high toxicity of organically bound lead has led to a mandate by the US Environmental Protection Agency to reduce the use of such compounds in gasoline. As a result, worldwide attention has turned to the use of oxygenated additives, specifically alcohols and ethers, as replacements for leaded additives to increase the octane rating of gasolines. Currently, the American Society for Testing and Materials (ASTM) specifies a multidimensional (dual-column) gas chromatographic approach, ASTM Test Method D4815, for separating oxygenated additives from interfering hydrocarbons in gasoline. We have found that, in many situations, a 100 meter fused silica capillary column provides sufficient resolution for separating the common oxygenated additives from components of complex hydrocarbon matrices, and eliminates the need for a multidimensional approach.

We analyzed samples of four common petroleum hydrocarbon streams – gasoline, naphtha, reformat, and alkylate – on our 100m x 0.25mm ID Petrocol™ DH fused silica capillary column, using a flame ionization detector and the conditions shown in Figure A (page 2). After completing detailed analyses of these samples, we added oxygenated compounds – C1-C4 alcohols, methyl tert-butyl ether (MTBE), and tert-amyl methyl ether (TAME) – then reanalyzed the samples under the same conditions and identified the oxygenates in the chromatograms. Figure A shows a chromatogram of an unleaded gasoline with the C1-C4 alcohols, MTBE, and TAME, added at levels of 0.05-0.10%, 1.0%, and 0.5%, respectively. Under the conditions employed, the 100 meter Petrocol DH column provided baseline separation of all but one of the oxygenates from major neighboring hydrocarbons.

MTBE was 95% resolved from 2,3-dimethylbutane. A subambient initial column temperature (-25°C) was needed to resolve methanol from isobutane.

Separations of oxygenate-containing naphtha, reformat, and alkylate samples produced the same results. Although a subambient initial column temperature was needed to resolve methanol and isobutane, the other oxygenates were reasonably well separated with a 35°C initial temperature when isobutane was absent from the sample. With a 35°C initial temperature, however, the elution order of MTBE and 2,3-dimethylbutane was reversed and the separation was approximately 75%.

There are significant advantages to using a single column method, relative to a dual-column approach, for analyzing oxygenates in these complex hydrocarbon samples. Multidimensional systems are far more complicated, due to valving, switching, and flow balancing requirements. Also, a single column approach can simultaneously yield detailed hydrocarbon information (e.g., PNA, PONA, or PIANO analyses), and permits quantification of sample components by area normalization, rather than through the use of external or internal standards.

As always, there are compromises. The 100 meter column increases analysis time, relative to a dual-column approach. Also, high levels of oxygenates (i.e., 10-20%) could reduce the resolution of some components. In this situation, coupling the Petrocol DH column to an oxygen-specific detector, such as the O-FID, essentially eliminates interferences from closely eluting hydrocarbons and the need for a multidimensional approach.

The importance of oxygenated compounds to the petroleum industry will continue to increase, as will the importance of simple, accurate analyses for these compounds. In some situations, we feel the advantages of the single column analysis, as exemplified by the Petrocol DH column and the conditions shown here, make this a useful approach.

Ordering Information:

Petrocol DH Capillary Column

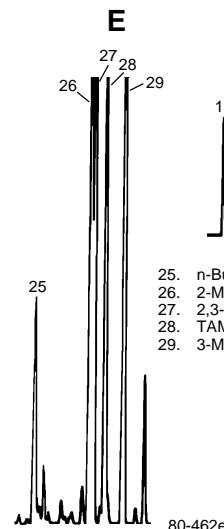
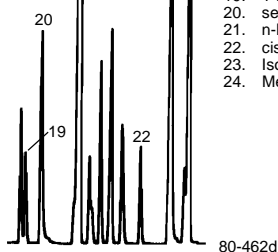
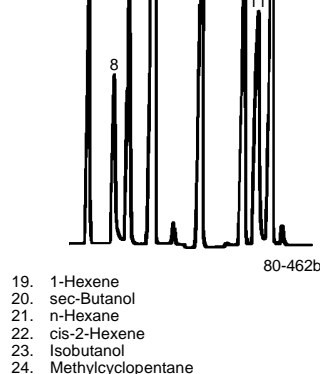
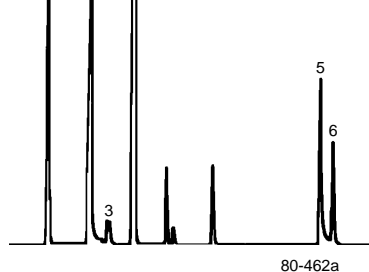
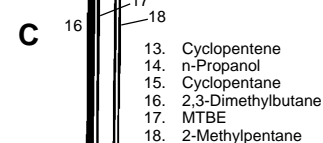
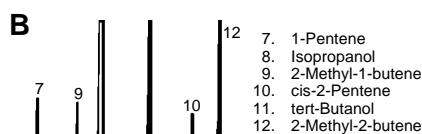
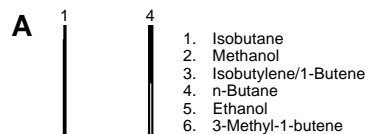
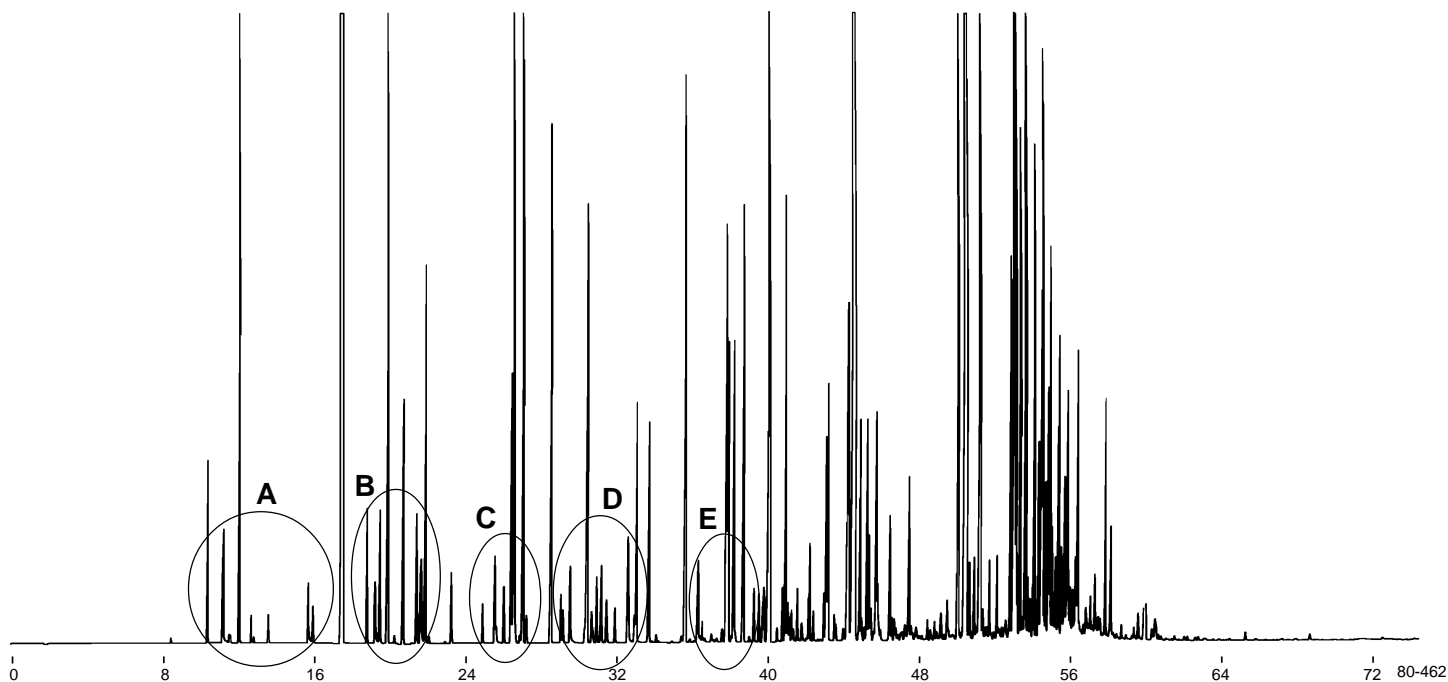
100m x 0.25mm ID fused silica, 0.50µm film **24160-U**

Contact our Technical Service Department (phone 800-359-3041 or 814-359-3041, FAX 814-359-5468) for expert answers to your questions.

Fused silica capillary columns manufactured under HP US Pat. No. 4, 293,415. Petrocol is a trademark of Supelco, Inc.

Figure A. Oxygenates in Gasoline

Column: Petrocol DH, 100m x 0.25mm ID, 0.5µm film
 Cat. No.: 24160-U
 Oven: -20°C to 65°C at 2°C/min, then to 225°C at 25°C/min
 Carrier: helium, 19cm/sec
 Det.: FID, 275°C
 Inj.: 0.5µL gasoline, 0.05-0.10% C1-C4 alcohols, 1.0% MTBE, 0.5% TAME added, split (100:1), 225°C



Notes

For more information, or current prices, contact your nearest Supelco subsidiary listed below. To obtain further contact information, visit our website (www.sigma-aldrich.com), see the Supelco catalog, or contact Supelco, Bellefonte, PA 16823-0048 USA.

ARGENTINA · Sigma-Aldrich de Argentina, S.A. · Buenos Aires 1119 AUSTRALIA · Sigma-Aldrich Pty. Ltd. · Castle Hill NSW 2154 AUSTRIA · Sigma-Aldrich Handels GmbH · A-1110 Wien
 BELGIUM · Sigma-Aldrich N.V./S.A. · B-2880 Bornem BRAZIL · Sigma-Aldrich Quimica Brasil Ltda. · 01239-010 São Paulo, SP CANADA · Sigma-Aldrich Canada, Ltd. · 2149 Winston Park Dr., Oakville, ON L6H 6J8
 CZECH REPUBLIC · Sigma-Aldrich s.r.o. · 186 00 Praha 8 DENMARK · Sigma-Aldrich Denmark A/S · DK-2665 Vallensbaek Strand FINLAND · Sigma-Aldrich Finland/YA-Kemia Oy · FIN-00700 Helsinki
 FRANCE · Sigma-Aldrich Chimie · 38297 Saint-Quentin-Fallavier Cedex GERMANY · Sigma-Aldrich Chemie GmbH · D-82041 Deisenhofen GREECE · Sigma-Aldrich (o.m.) Ltd. · Iloupoli 16346, Athens
 HUNGARY · Sigma-Aldrich Kft. · H-1067 Budapest INDIA · Sigma-Aldrich Co. · Bangalore 560 048 IRELAND · Sigma-Aldrich Ireland Ltd. · Dublin 24 ISRAEL · Sigma Israel Chemicals Ltd. · Rehovot 76100
 ITALY · Sigma-Aldrich s.r.l. · 20151 Milano JAPAN · Sigma-Aldrich Japan K.K. · Chuo-ku, Tokyo 103 KOREA · Sigma-Aldrich Korea · Seoul MALAYSIA · Sigma-Aldrich (M) Sdn. Bhd. · Selangor
 MEXICO · Sigma-Aldrich Quimica S.A. de C.V. · 50200 Toluca NETHERLANDS · Sigma-Aldrich Chemie BV · 3330 AA Zwijndrecht NORWAY · Sigma-Aldrich Norway · Torshov · N-0401 Oslo
 POLAND · Sigma-Aldrich Sp. z o.o. · 61-663 Poznań PORTUGAL · Sigma-Aldrich Quimica, S.A. · Sintra 2710 RUSSIA · Sigma-Aldrich Russia · Moscow 103062 SINGAPORE · Sigma-Aldrich Pte. Ltd.
 SOUTH AFRICA · Sigma-Aldrich (pty) Ltd. · Jet Park 1459 SPAIN · Sigma-Aldrich Quimica, S.A. · 28100 Alcobendas, Madrid SWEDEN · Sigma-Aldrich Sweden AB · 135 70 Stockholm
 SWITZERLAND · Supelco · CH-9471 Buchs UNITED KINGDOM · Sigma-Aldrich Company Ltd. · Poole, Dorset BH12 4QH
 UNITED STATES · Supelco · Supelco Park · Bellefonte, PA 16823-0048 · Phone 800-247-6628 or 814-359-3441 · Fax 800-447-3044 or 814-359-3044 · email: supelco@sial.com

H

Supelco is a member of the Sigma-Aldrich family. Supelco products are sold through Sigma-Aldrich, Inc. Sigma-Aldrich warrants that its products conform to the information contained in this and other Sigma-Aldrich publications. Purchaser must determine the suitability of the product for a particular use. Additional terms and conditions may apply. Please see the reverse side of the invoice or packing slip.