

Keep Your Lab Flowing

with RM on Your Waters ACQUITY LC Systems

Routine maintenance (RM) reduces downtime and protects your valuable analytical data. Use this guide to keep your Waters ACQUITY LC Systems operating at their best—replace these crucial components at the recommended intervals and keep extras on hand.

Factors such as analytical conditions, mobile phases and additives, and sample matrices can affect maintenance frequency.

For helpful maintenance videos and tips, plus a full list of replacement parts, visit www.restek.com

1 MONTH



Solvent Bottle Filters
cat.# 25954

Graduated Safety-Coated Bottle
cat.# 25304

3 MONTHS



Head Plunger Seal Kit
cat.# 26428

6 MONTHS



BSM Pump PM Kit
cat.# 25797

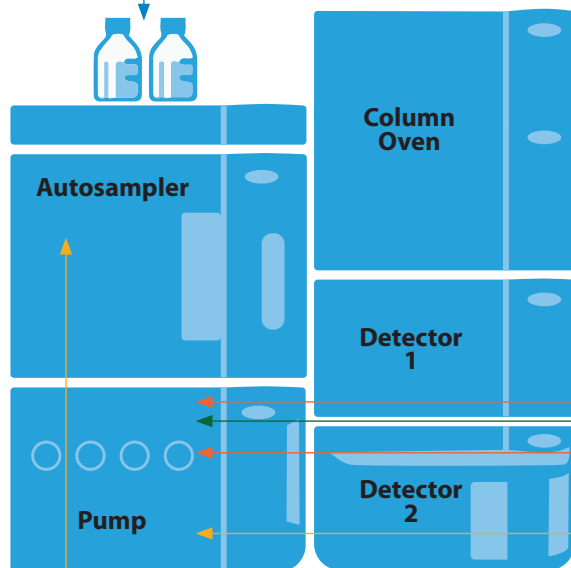
H-Class QSM Pump PM Kit
cat.# 25799

12 MONTHS



Sapphire Plungers
cat.# 25958

Pump O-Ring
cat.# 25951



Primary Check Valve
cat.# 25955

Accumulator Check Valve
cat.# 25956




Needle Assembly,
0.010 mm ID
cat.# 25942



+

MOBILE PHASE ADD-ON




Mobi-Cap GL-45 Bottle Tops
cat.# 27835
27836
27837

+

AUTOSAMPLER ADD-ON

Well Plates
0.45 mL, cat.# 26496
1.3 mL, cat.# 26494
2.0 mL, cat.# 26492

Mats
cat.# 26498



+


DETECTOR ADD-ON



Lamp, UV, Long Life,
cat.# 25775
For PDA/TUV
2489/2998

✓

TUBING KIT



Survival Kit for HPLC, PEEK
cat.# 25322

Needle Kit, 15 µL
cat.# 25777

