

Results

Fast-GC/MS provided separation patterns similar to results from conventional methods, but analysis times were 1/7 of conventional analysis times.

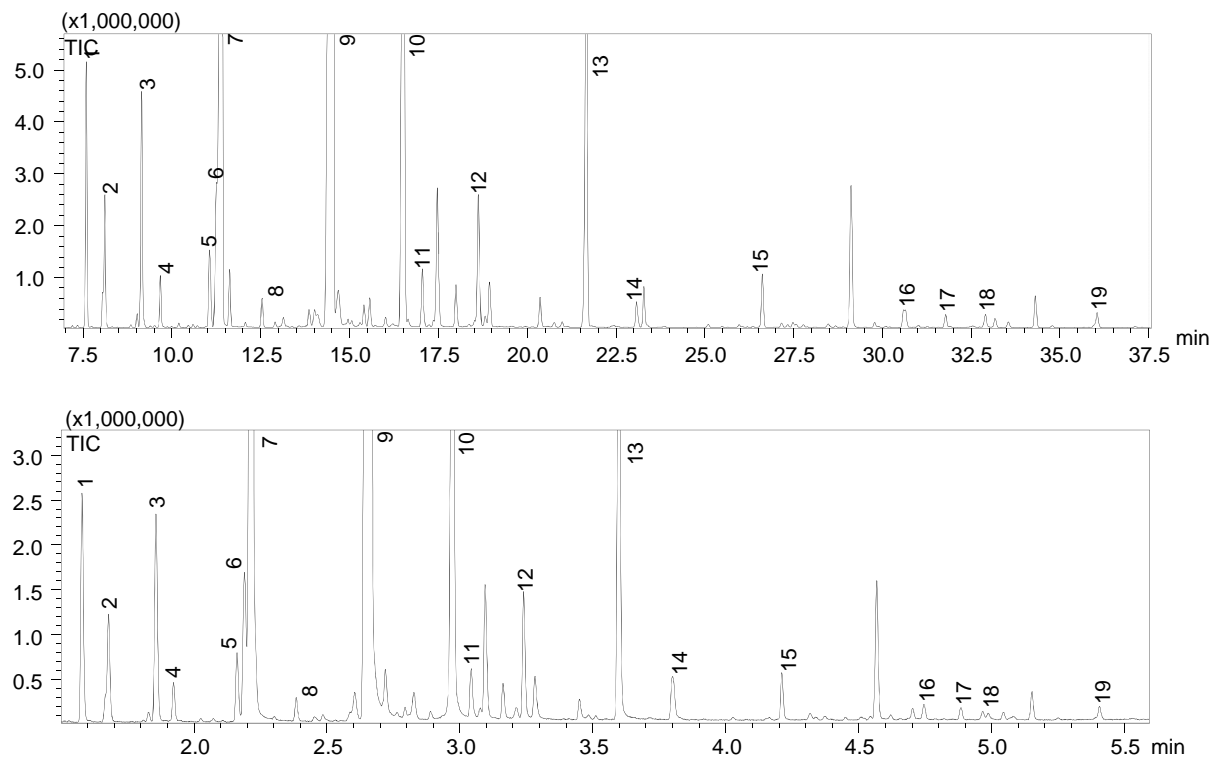


Fig. 1: Total Ion Current Chromatograms Obtained Using Conventional Method (upper) and Fast-GC/MS Method (lower)

ID	Compound Name	ID	Compound Name	ID	Compound Name
1	alpha-Pinene	8	gamma-Terpinene	14	Bornyl acetate
2	Camphene	9	Linalool	15	Neryl acetate
3	beta-Pinene	10	Camphor	16	(Z)-beta-Farnesene
4	Myrcene	11	Isoborneol	17	Germacrene D
5	Cymene	12	alpha-Terpineol	18	beta-Bisabolene
6	Limonene	13	Linalyl acetate	19	Caryophyllene oxide
7	Eucalyptol				

