

Application News

High Performance Liquid Chromatography

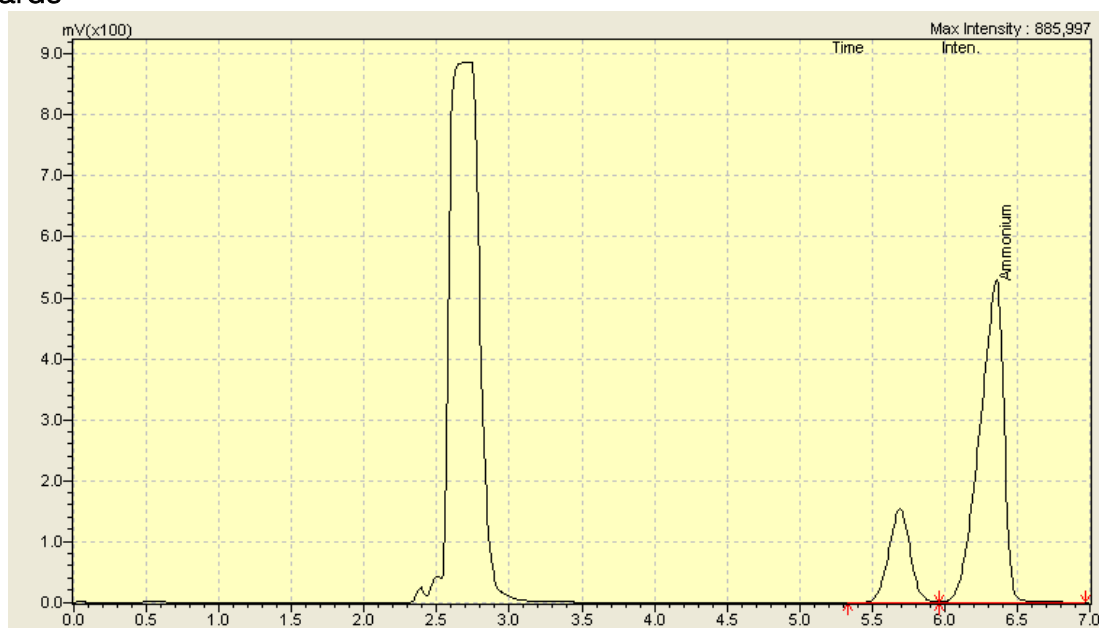
SSI LC 003

Analysis of Water Treatment Samples - Ammonium

Method

Column: Shodex; IC YS-50 4.6 x 125 mm
Guard Column: Shodex; IC YS-G
Mobile Phase: 6mM Methane Sulfonic Acid
Flow Rate: 0.5 mL/min
Column Oven: 37 °C
Detector Cell: 40 °C
Detector: CDD-10Avp
Gain: 0.1
Injection Vol.: 15 uL
Run Time: 7.0 mins

Standards



Limit of Detection: 0.1 ppm