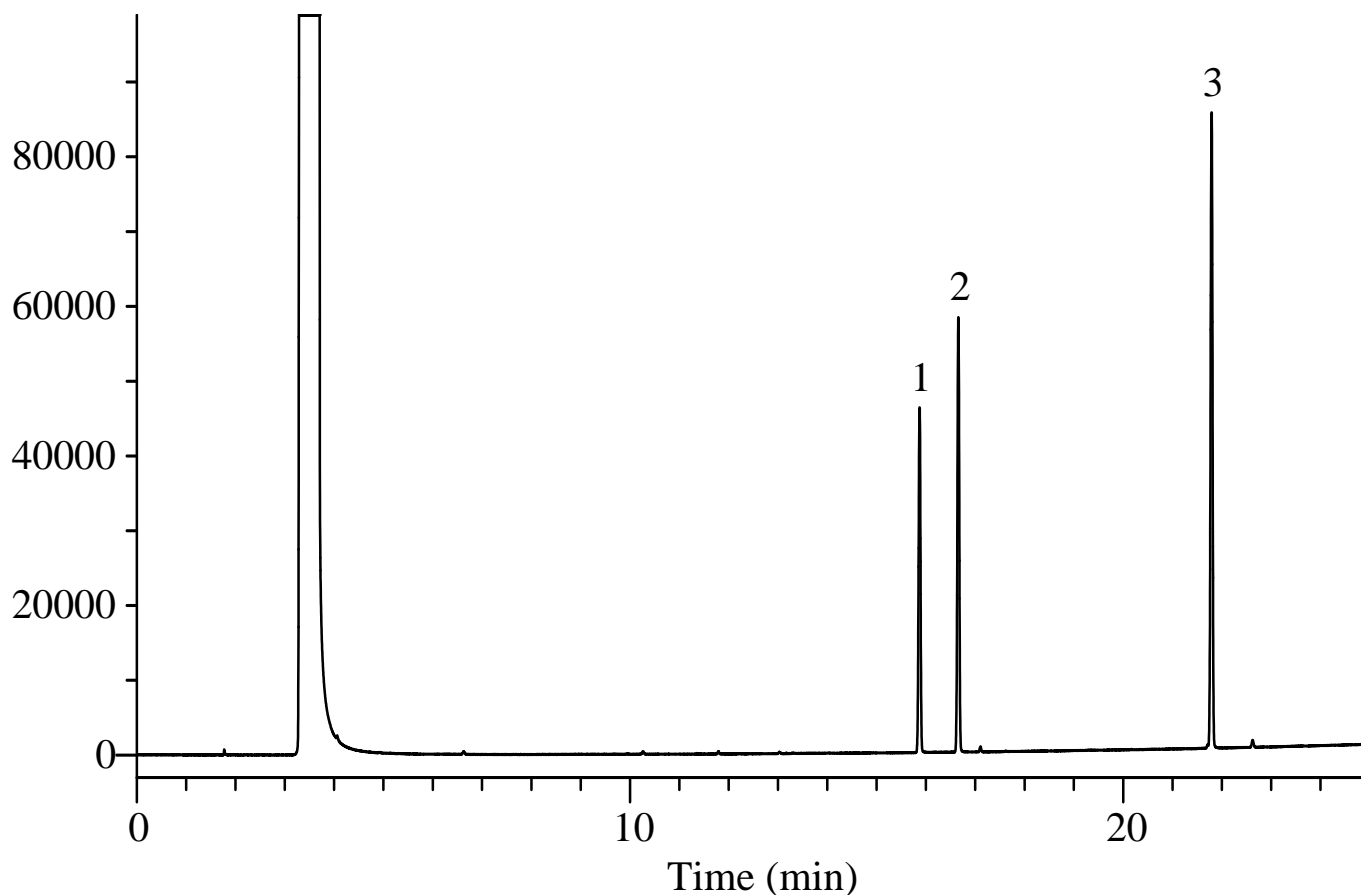


InertSearch™ for GC

InertCap® Applications

Lactate ester

Data No. GA116-0875

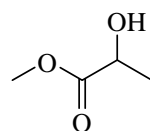


Conditions

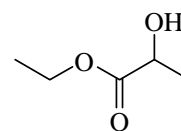
System : GC/FID
Column : InertCap Pure-WAX
0.25 mm I.D. x 30 m df = 0.25 µm
Col. Cat. No. : 1010-68142
Col. Temp. : 40 °C (5 min hold) - 5 °C/min - 200 °C
Carrier Gas : He 100 kPa
Injection : Split flow 67 mL/min
250 °C
Detection : FID Range 10⁰
250 °C
Sample Size : 1000 µg/mL in Methanol
1.0 µL

Analyte : 1. Methyl lactate
2. Ethyl lactate
3. Butyl lactate

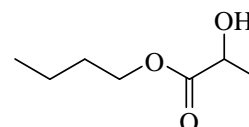
Chemical Structure



1. Methyl lactate



2. Ethyl lactate



3. Butyl lactate

Structures are created using Chemistry 4-D Draw which is provided by ChemInnovation Software, Inc.