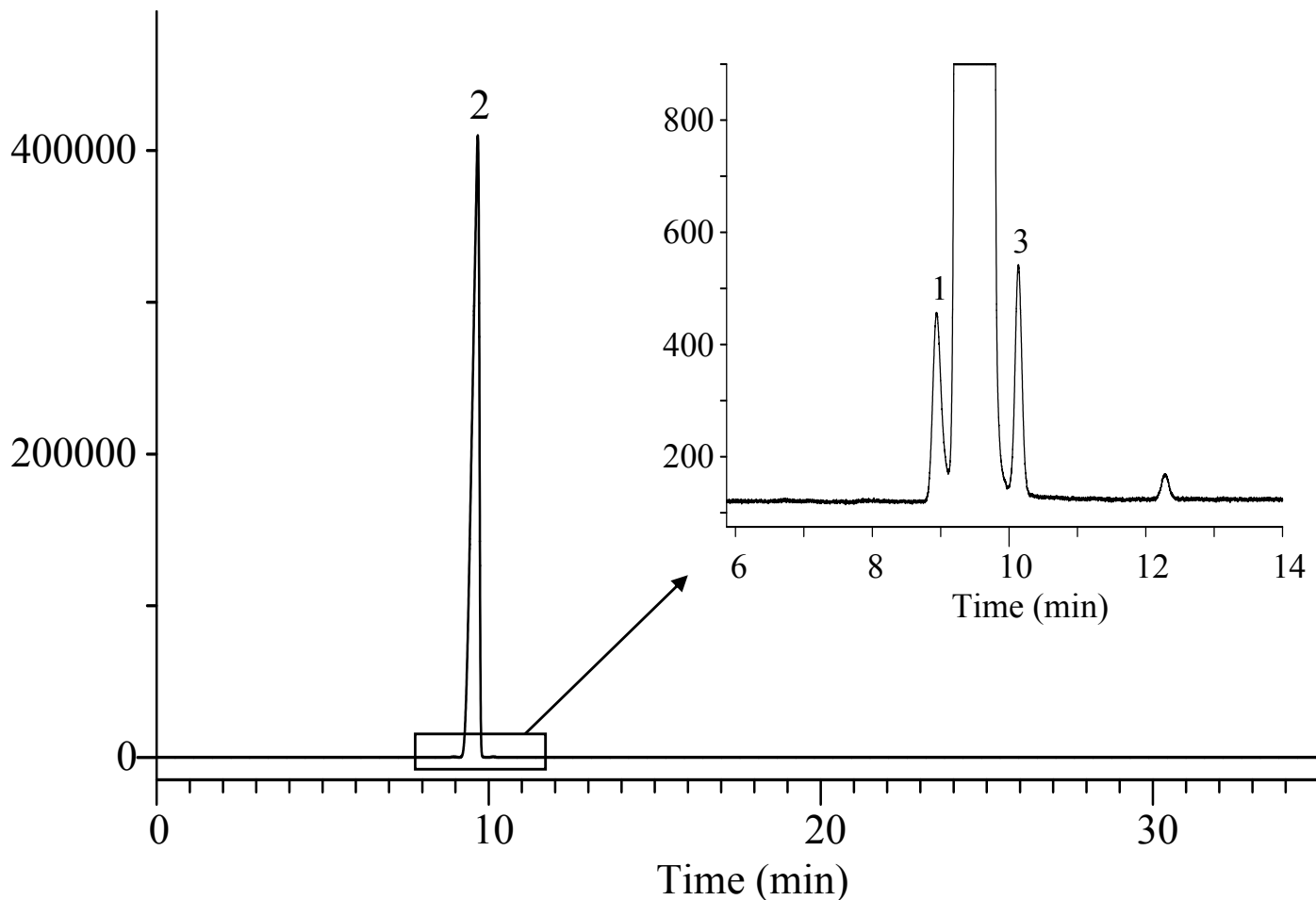


# InertSearch™ for GC

InertCap® Applications

## Cyclohexane

Data No. GA108-0875

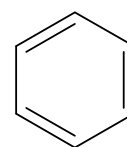


### Conditions

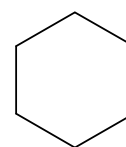
**System** : GC/FID  
**Column** : InertCap 1  
0.53 mm I.D. x 30 m df = 5.0 µm  
**Col. Cat. No.** : 1010-11449  
**Col. Temp.** : 40 °C (5 min hold) - 5 °C/min - 190 °C  
**Carrier Gas** : He 25.0 kPa  
**Injection** : Splitless 1 min Vent flow 50 mL/min  
200 °C  
**Detection** : FID Range 10<sup>3</sup>  
200 °C  
**Sample Size** : 500 µg/mL in Cyclohexane  
0.2 µL

**Analyte** : 1. Benzene  
2. Cyclohexane  
3. Cyclohexene

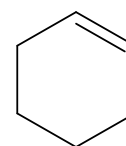
### Chemical Structures



1. Benzene



2. Cyclohexane



3. Cyclohexene

Structures are created using Chemistry 4-D Draw which is provided by ChemInnovation Software, Inc.