

Rxi[®]-5Si1 MS

Assured Performance for Forensic Applications

- Exceptional column inertness means greater certainty and lower detection limits.
- Versatile selectivity lets you keep analyzing samples instead of changing columns between methods.
- Robust, low-bleed phase results in better sensitivity and longer column lifetime.

Rxi[®]-5Sil MS Columns...

Whether analyzing postmortem samples or supporting athletic or workplace drug testing, toxicology labs are challenged with producing critical evidence that stands up under scrutiny. Increased pressure for fast, definitive results is driving labs to investigate standardized procedures and certifications aimed at reducing variability. GC column choice plays a vital role in data quality and using rugged, versatile Rxi[®]-5Sil MS capillary columns is an easy way to improve chromatography performance and simplify lab operations.

For years, “5” type (5% diphenyl/95% dimethyl polysiloxane) columns have been recognized as the column of choice for analyzing drugs of abuse, because they offer higher selectivity and retention for functionalized compounds than “1” type columns (100% dimethyl polysiloxane). While the selectivity of 5 type columns has many forensic applications, column performance can vary significantly among these columns. Some 5 type columns have inadequate deactivations, causing tailing peaks, or are poorly stabilized, resulting in high bleed levels, reduced sensitivity, and shorter column lifetimes. Rxi[®]-5Sil MS columns are based on a silarylene phase (Figure 1) that offers improved inertness and stability compared to typical 5 type columns.

Toxicology labs interested in improved data quality can increase confidence in results and reduce downtime by using Rxi[®]-5Sil MS columns. Exceptional inertness increases accuracy and precision at trace levels, while ruggedness assures low bleed and long column lifetime. As shown on the following pages, these versatile columns can improve lab efficiency and data quality for many different drugs of abuse, including cannabinoids, benzodiazepines, cocaine, opiates, and amphetamines.

Exceptional Inertness Means Greater Certainty and Lower Detection Limits

Column inertness improves peak shape, which greatly affects the signal-to-noise ratio and, therefore, analytical sensitivity. Rxi[®]-5Sil MS columns are exceptionally inert, ensuring symmetric peak shape and high response for a wide range of analyte chemistries. In addition to influencing signal-to-noise ratios, column inertness also affects retention time stability, which is an important factor for correct peak identification. Inertness is critical because peak tailing will increase as column activity increases, causing retention times to shift (Figure 2). Analyzing derivatized amphetamines or cocaine and its metabolites on highly inert Rxi[®]-5Sil MS columns results in symmetric peak shapes and excellent low-level response (Figures 3 and 4).

Figure 1: Rxi[®]-5Sil MS columns: phase structure results in a more inert, low-bleed column with broad selectivity for a wide range of compounds.

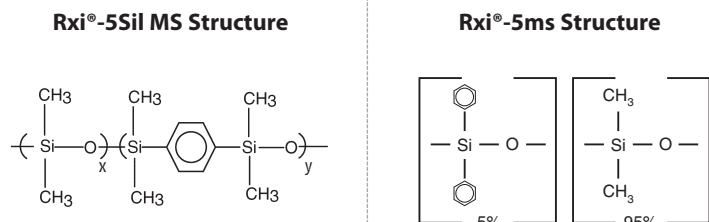
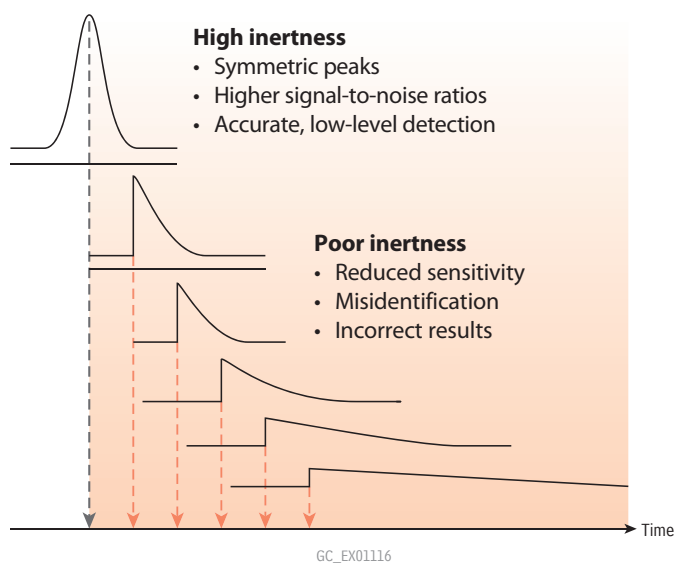
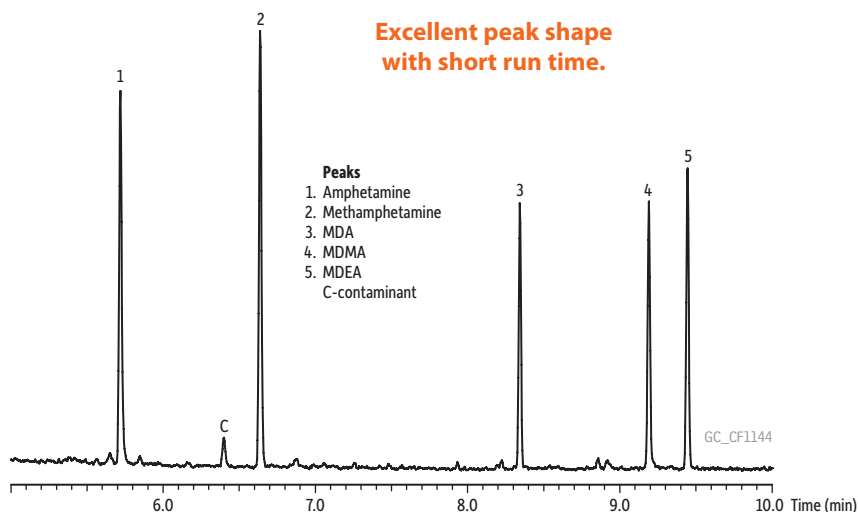


Figure 2: As column activity increases, signal decreases and retention time shifts.



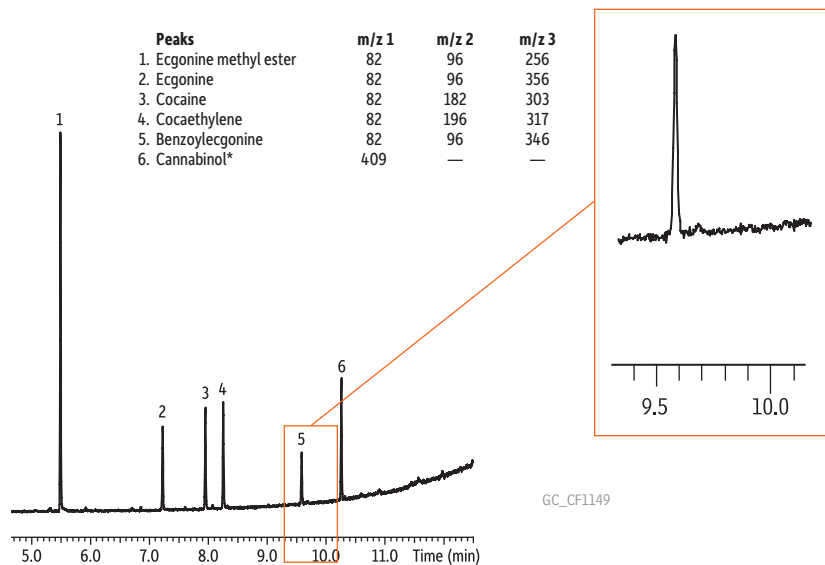
Assured Performance for Forensic Applications

Figure 3: Robust, inert Rxi®-5Sil MS columns do not break down under harsh conditions, such as exposure to the derivatization reagents used in amphetamines analysis. Compounds shown are HFAA derivatives.



Column: Rxi®-5Sil MS, 30 m, 0.25 mm ID, 0.25 µm (cat.# 13623); **Sample:** 500 ng/mL HFAA derivatives in butyl chloride; **Injection:** Inj. Vol.: 1 µL splitless (hold 1 min); Liner: 3.5 mm splitless taper w/wool (cat.# 22286-200.1); Inj. Temp.: 250 °C; Purge Flow: 28 mL/min; **Oven:** Oven Temp: 75 °C to 300 °C at 15 °C/min; Carrier Gas: He, constant linear velocity, 45 cm/sec, 13.5 psi, 93.1 kPa @ 75 °C; **Detector:** MS, Scan; Transfer Line Temp.: 250 °C; Analyzer Type: Quadrupole; Source Temp.: 200 °C; Electron Energy: 70 eV; Solvent Delay Time: 4 min; Tune Type: PFTBA; Ionization Mode: EI; Scan Range: 40-300 amu; Scan Rate: 5 scans/sec; **Instrument:** Shimadzu 2010 GC & QP2010+ MS.

Figure 4: Low levels of derivatized cocaine and its metabolites can also be reliably separated on Rxi®-5Sil MS columns.



Column: Rxi®-5Sil MS, 30 m, 0.25 mm ID, 0.25 µm (cat.# 13623); **Sample:** 100 ng/mL in butyl chloride; **Injection:** Inj. Vol.: 1 µL splitless (hold 1 min); Liner: single taper w/wool (cat.# 22286-200.1); Inj. Temp.: 250 °C; Purge Flow: 20 mL/min; **Oven:** Oven Temp: 100 °C to 200 °C at 30 °C/min to 300 °C at 15 °C/min; Carrier Gas: He, constant linear velocity, 40 cm/sec, 12.5 psi, 86.2 kPa @ 100 °C; **Detector:** MS, SIM; Transfer Line Temp.: 310 °C; Source Temp.: 250 °C; Solvent Delay Time: 4 min.; Tune Type: PFTBA; Ionization Mode: EI; **Instrument:** Shimadzu 2010 GC & QP2010+ MS; **Notes:** Samples were prepared as follows: Standards brought to dryness under nitrogen, then 50 µL BSTFA + 1%TMCS (cat.# 35606) added. 50 µL pyridine was then added, and samples were incubated at 70 °C for 30 min. After incubation, samples were diluted with butyl chloride.

* Used as derivatization check

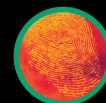
Lower Detection Limits with Ground-Breaking Column Technology

Rxi® technology unifies outstanding inertness, low bleed, and high reproducibility into a single high performance column line. Take variation out of the equation and get the most consistent results for trace level analysis with Rxi® columns.

Visit us at www.restek.com/rxi

phases available

- Rxi®-1ms
- Rxi®-1HT
- Rxi®-5ms
- Rxi®-5Sil MS
- Rxi®-5HT
- Rxi®-XLB
- Rxi®-624Sil MS
- Rxi®-35Sil MS
- Rxi®-17
- Rxi®-17Sil MS
- Rxi® guard/retention gap columns



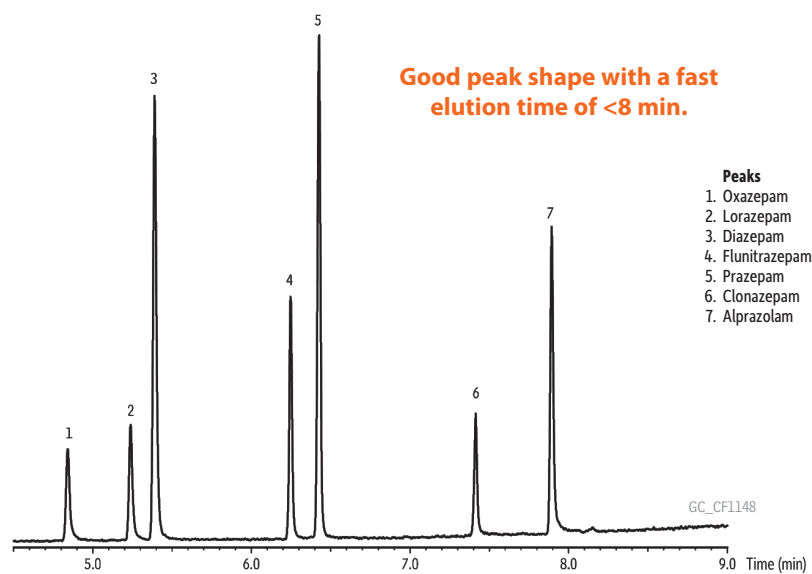
Rxi[®]-5Sil MS Columns...

Optimized Selectivity Lets You Keep Analyzing Samples Instead of Changing Columns Between Methods

While the inertness of Rxi[®]-5Sil MS columns exceeds typical 5 type columns, the selectivity is similar and is ideal for many toxicological applications. A wide range of analyte classes can be reliably separated on Rxi[®]-5Sil MS columns, including structurally-related compounds, such as benzodiazepines. Benzodiazepines are often analyzed on a fluorinated phase (e.g. Rtx[®]-200), but the selectivity of the Rxi[®]-5Sil MS column provides complete separation of all peaks of interest (Figure 5). Since a fluorinated column is no longer necessary, more time can be spent running samples with fewer time-consuming column changes between methods.

In addition to benzodiazepines, the selectivity of the Rxi[®]-5Sil MS column is also well-suited for the analysis of several common classes of drugs of abuse including cannabinoids, cocaine and its metabolites, opiates, and amphetamines. The Miami Dade Medical Examiner's Laboratory provides another example of how Rxi[®]-5Sil MS columns can simplify analyses and improve lab efficiency. The versatility and robustness of the Rxi[®]-5Sil MS column assisted the lab in streamlining operations by reducing time-consuming column changes and maintenance. One of the applications routinely run on this column is the analysis of opiates (Figure 6). The selectivity of the Rxi[®]-5Sil MS column gives excellent separation between all compounds, and very low limits of detection are achieved since bleed is minimal. In addition, the column stands up extremely well to the derivatization reagents used prior to analysis, further increasing throughput by reducing instrument downtime for maintenance. The Rxi[®]-5Sil MS column also produces excellent chromatography for cannabinoids (Figure 7).

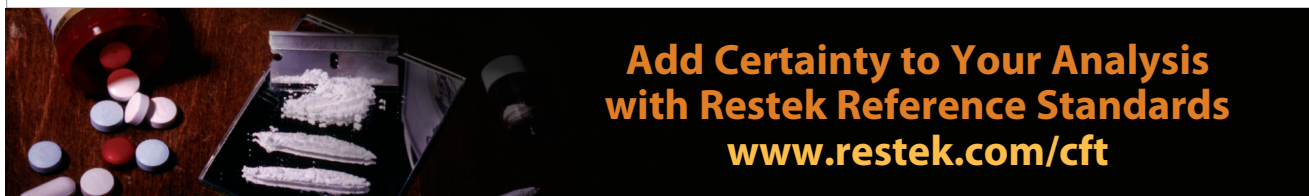
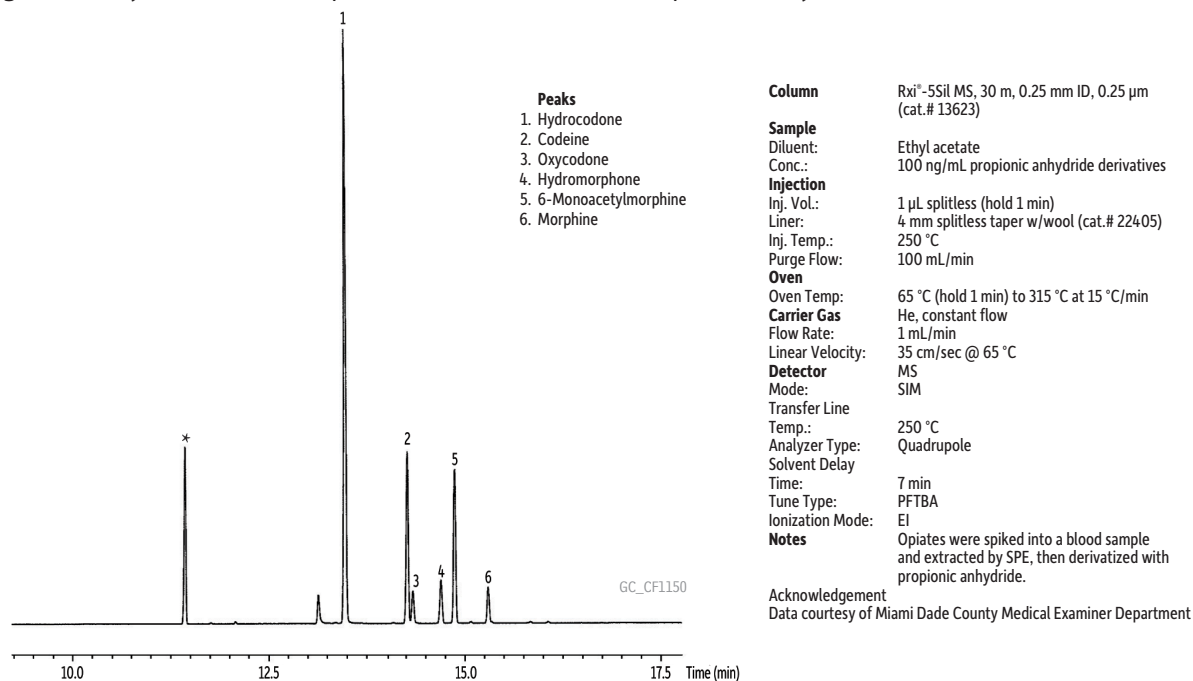
Figure 5: No need to change columns to analyze benzodiazepines—Rxi[®]-5Sil MS columns give excellent separation of structurally-related benzodiazepines.



Column: Rxi[®]-5Sil MS, 30 m, 0.25 mm ID, 0.25 μ m (cat.# 13623); **Sample:** 15 μ g/mL in butyl chloride; **Injection:** Inj. Vol.: 1 μ L splitless (hold 1 min); **Liner:** 3.5 mm splitless taper w/wool (cat.# 22286-200.1); **Inj. Temp.:** 280 °C; **Purge Flow:** 32.2 mL/min (20:1 split); **Oven:** Oven Temp: 200 °C to 330 °C at 15 °C/min (hold 3 min); **Carrier Gas:** He, constant linear velocity, 50 cm/sec, 23.7 psi, 163.4 kPa @ 200 °C; **Detector:** MS, Scan; **Transfer Line Temp:** 280 °C; **Analyzer Type:** Quadrupole; **Source Temp.:** 200 °C; **Electron Energy:** 70 eV; **Solvent Delay Time:** 4 min; **Tune Type:** PFTBA; **Ionization Mode:** EI; **Scan Range:** 50-350 amu; **Scan Rate:** 5 scans/sec; **Instrument:** Shimadzu 2010 GC & QP2010+ MS

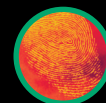
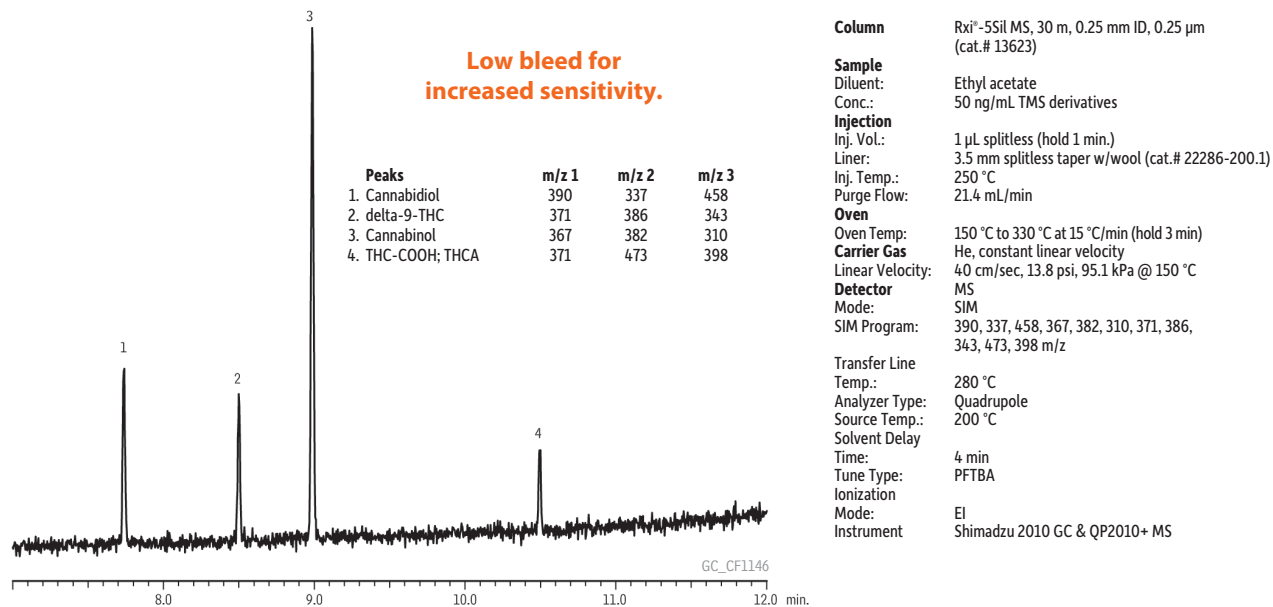
Assured Performance for Forensic Applications

Figure 6: Analysis of derivatized opiates on an Rxi®-5Sil MS column performed by the Miami Dade Medical Examiner's lab.



**Add Certainty to Your Analysis
with Restek Reference Standards**
www.restek.com/cft

Figure 7: High signal response due to column inertness and efficiency, combined with low bleed, results in maximum sensitivity for derivatized cannabinoids (50 ng/mL).



Rxi[®]-5Sil MS Columns...

Robust, Low-Bleed Phase Results in Better Sensitivity and Longer Column Lifetime

Many drug assays require that compounds be derivatized prior to analysis. Derivatization not only allows for GC analysis of compounds not otherwise amenable to gas chromatography, it also helps to produce unique, high molecular weight fragments that assist with GC-MS quantitation. While derivatization has its advantages, derivatization reagents and their byproducts are extremely harsh and can reduce column lifetimes by damaging the stationary phase. Phase damage usually manifests as increased bleed and tailing of active compounds. The unique Rxi[®]-5Sil MS stationary phase, with its embedded arylene groups, provides a more rigid matrix that is less likely to be damaged by derivatization reagents or their byproducts.

As a test of column lifetime, an Rxi[®]-5Sil MS column was subjected to repeated injections of high concentration HFBA, a harsh derivatization reagent, as well as prolonged exposure to the column's maximum operational temperature during each injection. Throughout lifetime testing, column bleed and inertness were tested by analyzing a mixture of active test compounds that tail severely on less inert columns. After 400 injections, no change in bleed or inertness was observed (Figures 8 and 9). The enhanced stability of Rxi[®]-5Sil MS columns reduces phase bleed, resulting in longer column lifetimes and improved performance with sensitive mass spectrometry detectors.

Conclusion

Rxi[®]-5Sil MS columns are ideal for toxicology labs interested in improving data quality by increasing certainty and reducing downtime. These columns have similar selectivity to conventional 5 type columns, but are significantly more inert and robust. Rxi[®]-5Sil MS columns provide more accurate trace-level results and reduced downtime for column changes, offering labs a valuable tool for improving methods for the routine analysis of drugs of abuse.

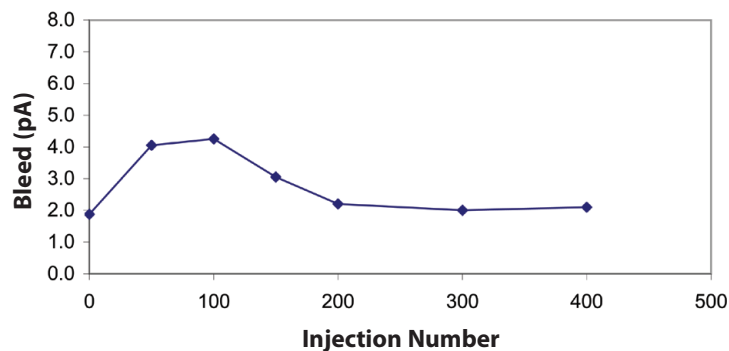
Toxicology Solutions

Restek is your source for clinical and forensic toxicology solutions

- Exceptional GC and HPLC columns
- Innovative parts and accessories
- Stock and custom analytical standards
- Sample prep products
- Technical resources

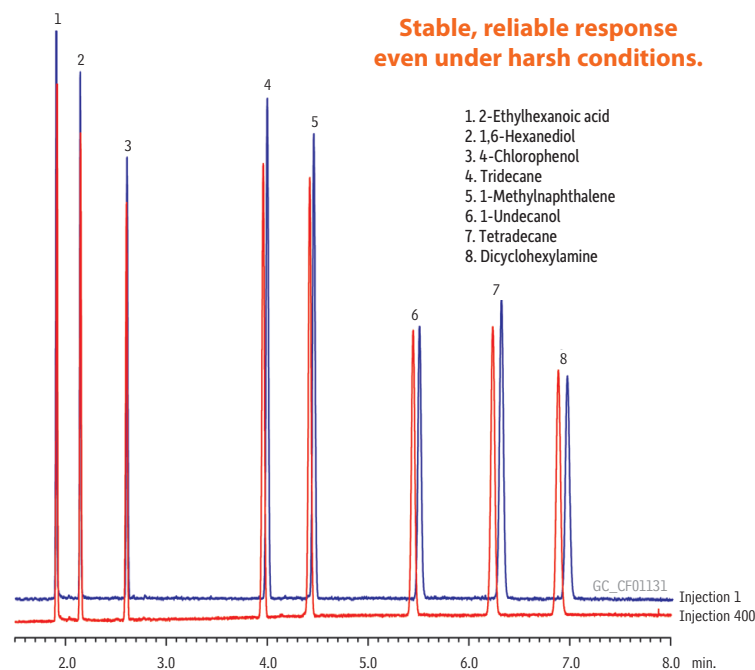
www.restek.com/cft

Figure 8: Low column bleed results in long column lifetimes, saving labs replacement costs.



Column bleed over 400 injections of HFBA derivatization reagent. Column was held at the maximum isothermal temperature.

Figure 9: Rugged Rxi[®]-5Sil MS columns produce consistent retention times, even after 400 injections of derivatization reagent.



Column: Rxi[®]-5Sil MS, 30 m, 0.25 mm ID, 0.25 μ m (cat.# 13623); Sample: Column test mix (cat.# 35226); Inj.: 1.0 μ L split (split ratio 1:60), 4 mm recessed single taper (cat.# 20983); Inj. temp.: 250 °C; Carrier gas: helium, constant pressure; Linear velocity: 36 cm/sec @ 125 °C; Oven temp.: 125 °C; Det: FID @ 320 °C; Instrument: Agilent 6890

Assured Performance for Forensic Applications

Restek's low-bleed MS columns exceed requirements of the most sensitive mass spectrometers.

Rxi®-5Sil MS Columns (fused silica)

(Low polarity phase; Crossbond® 1,4-bis(dimethylsiloxy)phenylene dimethyl polysiloxane)

- Engineered to be a low-bleed GC-MS column.
- Excellent inertness for active compounds.
- General-purpose columns—ideal for GC-MS analysis of drugs of abuse.
- Temperature range: -60 °C to 320/350 °C.

The Rxi®-5Sil MS stationary phase incorporates phenyl groups in the polymer backbone. This improves thermal stability, reduces bleed, and makes the phase less prone to oxidation. Rxi®-5Sil MS columns are ideal for GC-MS applications requiring high sensitivity, including use in ion trap systems.

ID	df	temp. limits	15-Meter cat.#	30-Meter cat.#
0.25 mm	0.25 µm	-60 to 320/350 °C	13620	13623
	0.50 µm	-60 to 320/350 °C	13635	13638
0.32 mm	0.25 µm	-60 to 320/350 °C	13621	13624
	0.50 µm	-60 to 320/350 °C		13639

similar phases

DB-5ms, DB-5msUI, VF-5ms, CP-Sil 8 CB, ZB-5msi, Rtx-5Sil MS

Get 6 columns for the price of 5!

Call 800-356-1688, ext. 4, or your Restek representative for details!

Rxi®-5Sil MS with Integra-Guard®

- Extend column lifetime.
- Eliminate leaks with a built-in retention gap.
- Inertness verified by isothermal testing.

Description	qty.	cat.#
15 m, 0.25 mm ID, 0.25 µm Rxi-5Sil MS w/10 m Integra-Guard Column	ea.	13620-127
30 m, 0.25 mm ID, 0.25 µm Rxi-5Sil MS w/5 m Integra-Guard Column	ea.	13623-124
30 m, 0.25 mm ID, 0.25 µm Rxi-5Sil MS w/10 m Integra-Guard Column	ea.	13623-127
15 m, 0.25 mm ID, 0.50 µm Rxi-5Sil MS w/5 m Integra-Guard Column	ea.	13635-124
30 m, 0.25 mm ID, 0.50 µm Rxi-5Sil MS w/5 m Integra-Guard Column	ea.	13638-124
30 m, 0.25 mm ID, 0.50 µm Rxi-5Sil MS w/10 m Integra-Guard Column	ea.	13638-127
30 m, 0.32 mm ID, 0.50 µm Rxi-5Sil MS w/5 m Integra-Guard Column	ea.	13639-125

Improve Accuracy with Restek Derivatization Reagents

- Increase volatility
- Improve response
- Enhance mass spec performance

www.restek.com/cft



Recommended for Splitless Injection

Restek Premium 4.0 mm ID

Single Taper Inlet Liner w/ Wool

For Agilent GCs equipped with split/splitless inlets



ID x OD x L	qty.	cat.#
Single Taper, Restek Premium Technology, Borosilicate Glass with Quartz Wool		
4.0 mm x 6.5 mm x 78.5 mm	ea.	23303.1
4.0 mm x 6.5 mm x 78.5 mm	5-pk.	23303.5
4.0 mm x 6.5 mm x 78.5 mm	25-pk.	23303.25

Restek Premium 4.0 mm ID

Single Taper Inlet Liner

For Agilent GCs equipped with split/splitless inlets



ID x OD x L	qty.	cat.#
Single Taper, Restek Premium Technology, Borosilicate Glass		
4.0 mm x 6.5 mm x 78.5 mm	ea.	23302.1
4.0 mm x 6.5 mm x 78.5 mm	5-pk.	23302.5
4.0 mm x 6.5 mm x 78.5 mm	25-pk.	23302.25

Recommended for Split Injection

Restek Premium 4.0 mm ID

Precision® Inlet Liner w/ Wool

For Agilent GCs equipped with split/splitless inlets



ID x OD x L	qty.	cat.#
Precision, Restek Premium Technology, Borosilicate Glass with Quartz Wool		
4.0 mm x 6.3 mm x 78.5 mm	ea.	23305.1
4.0 mm x 6.3 mm x 78.5 mm	5-pk.	23305.5
4.0 mm x 6.3 mm x 78.5 mm	25-pk.	23305.25

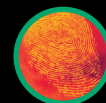
Restek Premium 4.0 mm ID Cyclo Inlet Liner

For Agilent GCs equipped with split/splitless inlets



ID x OD x L	qty.	cat.#
Cyclo, Restek Premium Technology, Borosilicate Glass		
4.0 mm x 6.3 mm x 78.5 mm	ea.	23312.1
4.0 mm x 6.3 mm x 78.5 mm	5-pk.	23312.5
4.0 mm x 6.3 mm x 78.5 mm	25-pk.	23312.25

More columns, inlet liners, standards, and accessories are available at www.restek.com/cft





SPP speed. USLC[®] resolution. A new species of column.

Combine the speed and efficiency of superficially porous particles with the resolution of Ultra Selective Liquid Chromatography (USLC[®]) to more easily separate peaks and run faster without costly UHPLC.

Time-Tested Restek[®] Biphenyl Phase:

The established choice for bioanalytical testing since 2005

- Separates compounds that other phenyl and C18 chemistries can't.
- Allows the use of simple, MS-friendly mobile phases.
- Restek's most popular LC phase (also available on fully porous silica).

Also available in acid-resistant ARC-18 for large, multiclass lists by MS



Experience *Selectivity Accelerated*
www.restek.com/raptor

PATENTS & TRADEMARKS

Restek[®] patents and trademarks are the property of Restek Corporation. (See www.restek.com/Patents-Trademarks for full list.) Other trademarks appearing in Restek[®] literature or on its website are the property of their respective owners. The Restek[®] registered trademarks used here are registered in the United States and may also be registered in other countries.

Lit. Cat.# CFBR1302A-UNV

© 2014 Restek Corporation. All rights reserved.
Printed in the U.S.A.

U.S. • 110 Benner Circle • Bellefonte, PA 16823 • 1-814-353-1300 • 1-800-356-1688 • fax: 1-814-353-1309 • www.restek.com

China • phone: +86-10-5629-6620 • fax: +86-10-5814-3980 • cn.restek.com

France • phone: +33 (0)1 60 78 32 10 • fax: +33 (0)1 60 78 70 90 • www.restek.fr

Germany • phone: +49 (0)6172 2797 0 • fax: +49 (0)6172 2797 77 • www.restekgmbh.de

Italy • phone: +39-02-7610037 • fax: +39-02-70100100 • www.superchrom.it

Japan • phone: +81 (3)6459 0025 • fax: +81 (3)6459 0025 • e-mail: restekjapan@restek.com

UK • phone: +44 (0)1494 563377 • fax: +44 (0)1494 564990 • www.thamesrestek.co.uk

