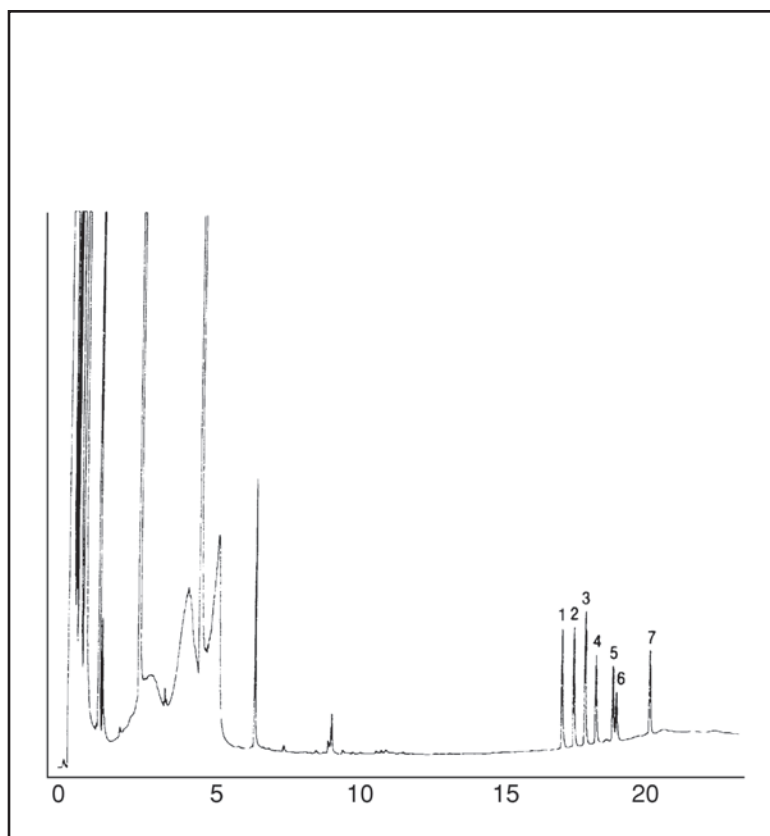


GC CAPILLARY COLUMN APPLICATIONS: STEROIDS

Cholesterol Esters

COLUMN: 007-23, Cyanpropyl
Methylpolysiloxane
10M. x 0.25mm I.D. x
0.25µm film
Cat. No.: 007-23-10-0.25F
Temperature: 80° (20°/min.) - 170° -
(10°/min.) -300°C
Injector: 270°C
Detector: 300°C, FID
Carrier Gas: 34 cm/sec., He.

1. cholesteryl laurate
2. cholesteryl tridecanoate
3. cholesteryl myristate
4. cholesteryl pentadecanoate
5. cholesteryl palmitelaidate
6. cholesteryl heptadecanoate
7. cholesteryl linoelaidate



PO Box 3881, Woodbridge, CT 06525 • (203) 393-3112 • FAX (203) 393-0391
TOLLFREE: 800-275-7033 • E-MAIL: tech@quadrexcorp.com