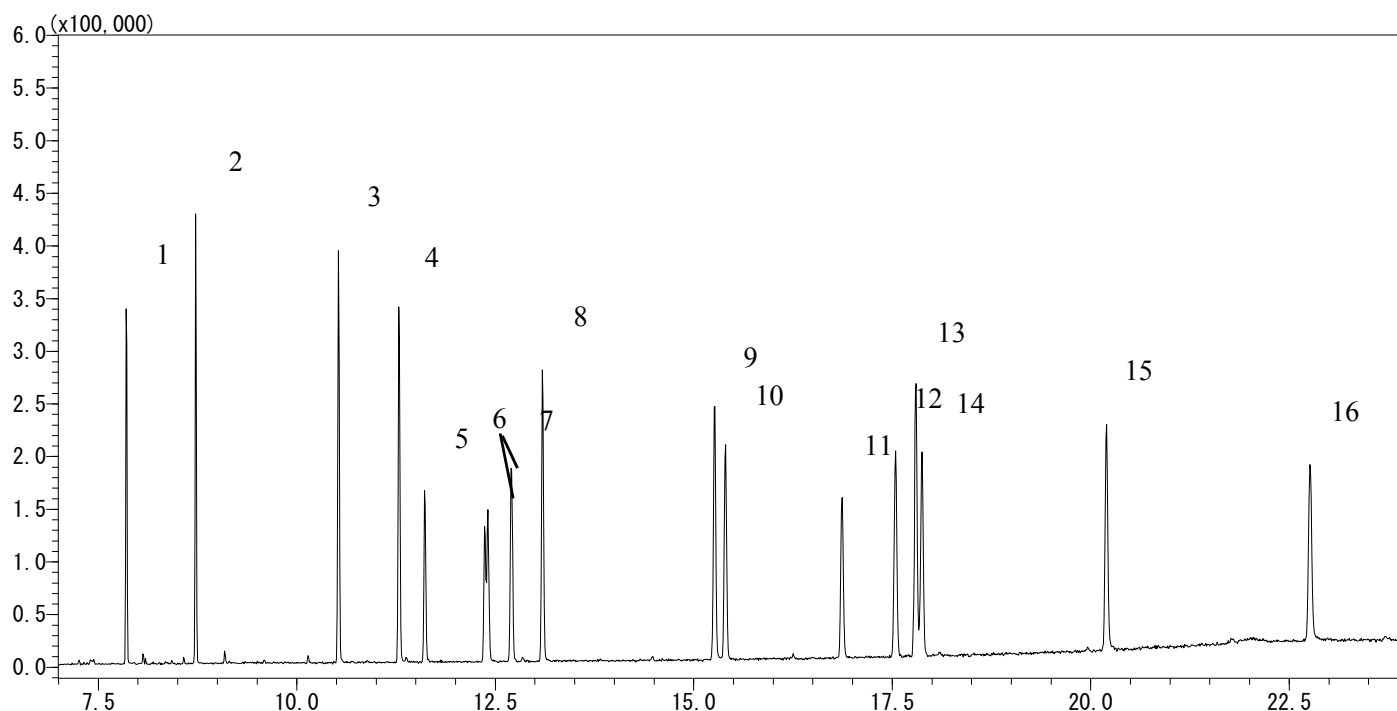


## Phthalic acid esters by the GB/T 21911-2008

Data No. GA179-0644



### Conditions

**System** : GC/MS  
**Column** : InertCap 5MS/NP  
0.25 mm I.D. x 30 m df = 0.25 µm  
**Col.Cat. No.** : 1010-18642  
**Col. Temp.** : 60 °C(1 min hold) - 20 °C/min - 220 °C  
(1 min hold) - 5 °C/min - 280 °C(4 min hold)  
**Carrier Gas** : He 36.5 cm/sec  
**Injection** : Splitless 1 min  
250 °C  
**Detection** : MS Scan (35 – 500 m/z)  
Interface Temp. 280 °C  
**Sample Size** : 1 µg/mL in Hexane  
1 µL

### Analyte :

1. Dimethyl phthalate
2. Diethyl phthalate
3. Diisobutyl phthalate
4. Di-*n*-butyl phthalate
5. Bis(2-methoxyethyl)phthalate
6. Bis(4-methyl-2-pentyl)phthalate
7. Bis(2-ethoxyethyl)phthalate
8. Di-*n*-pentyl phthalate
9. Di-*n*-hexyl phthalate
10. Benzyl butyl phthalate
11. Bis(2-*n*-butoxyethyl)phthalate
12. Dicyclohexyl phthalate
13. Di(2-ethylhexyl)phthalate
14. Diphenyl phthalate
15. Di-*n*-octyl phthalate
16. Di-*n*-nonyl phthalate